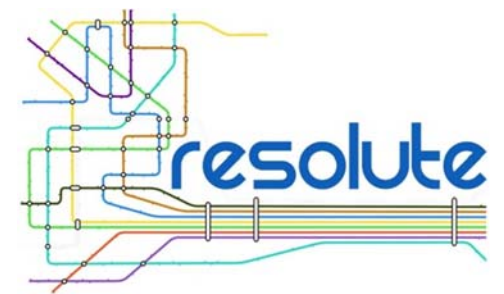




UNIVERSITÀ
DEGLI STUDI
FIRENZE

DINFO
DIPARTIMENTO DI
INGEGNERIA
DELL'INFORMAZIONE

DISIT
DISTRIBUTED SYSTEMS
AND INTERNET
TECHNOLOGIES LAB



RESOLUTE: Governing for Resilience – Implementation Challenges

<http://www.resolute-eu.org/>

Paolo Nesi

University of Florence, DISIT Lab

<http://www.disit.org>, paolo.nesi@unifi.it

*The Resilient City – Future Proofing our Urban
Infrastructure, Symposium in Genoa, Italy!
24th May 2016 (Genoa Smart Week 2016)*



Horizon 2020
European Union Funding
for Research & Innovation

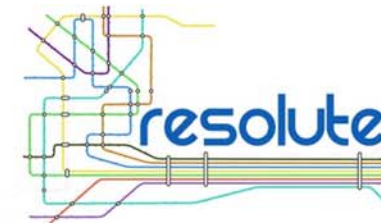




UNIVERSITÀ
DEGLI STUDI
FIRENZE

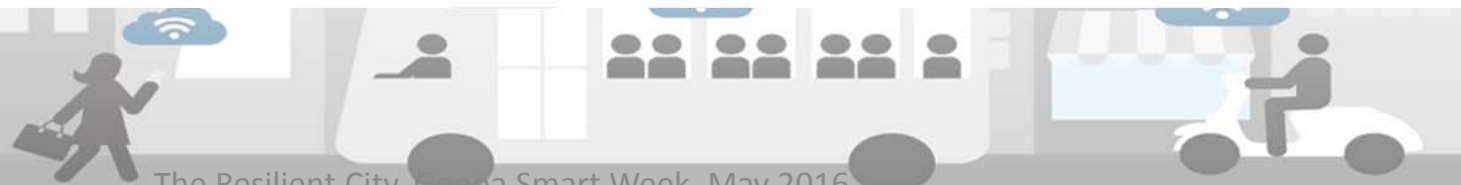
DINFO
DIPARTIMENTO DI
INGEGNERIA
DELL'INFORMAZIONE

DISIT
DISTRIBUTED SYSTEMS
AND INTERNET
TECHNOLOGIES LAB
<http://www.disit.org>



RESOLUTE Project Overview

- → **Resilience management guidelines and Operationalization applied to Urban Transport Environment**
 - www.resolute-eu.org, infores@resolute-eu.org
- **Started:** 1st May 2015, **duration** 36 months
- **Topics:** Government, Society, Threats and Vulnerability, Interdependencies and Cascading Effects, Science and Technology
- **Pilots:** Florence and Athens

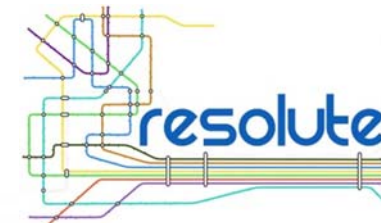




RESOLUTE Project Objectives

- 1) **Conducting systematic review and assessment** of the state of the art of Resilience Assessment and management concepts, national guidelines and their implementation strategies in order to develop a
 - **conceptual framework** for resilience with Urban Transport Systems, UTS
- 2) Development of **European Resilience Management Guidelines, ERMG**
- 3) Operationalize and validate the ERMG by implementing the **Collaborative Resilience Assessment and Management Support System (CRAMSS)** for UTS addressing Roads and Rails infrastructures
- 4) Enhancing resilience through improved support to human decision making processes, particularly through increased focus on the **training** of first responders and population on ERMG and RESOLUTE System
- 5) **ERMG wide dissemination** → promoting acceptance and adoption at EU and Associate Countries level

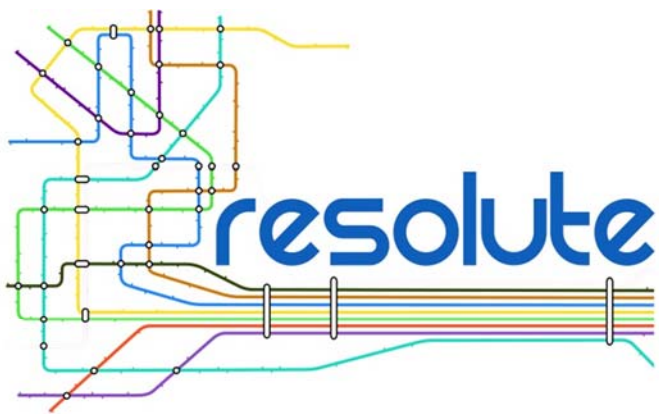




RESOLUTE Outcomes

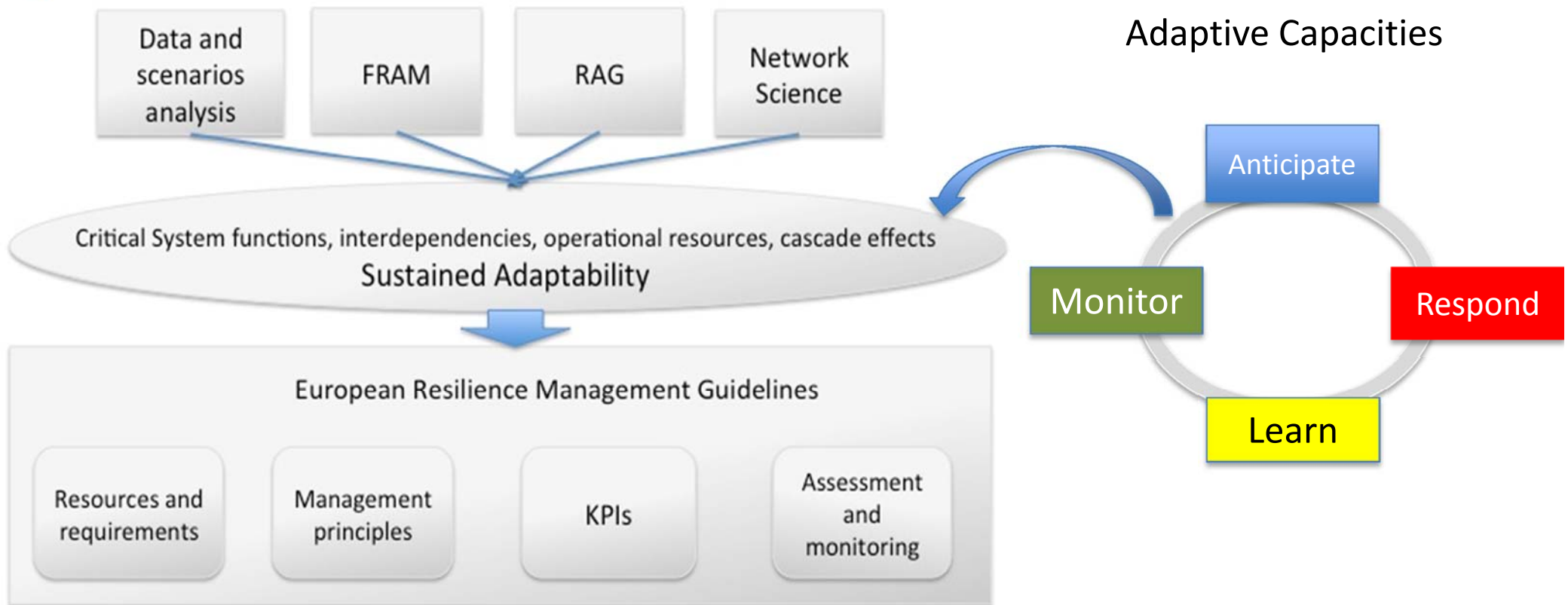
- **European Resilience Management Guidelines** – (guidelines) – consensus driven approach improve guidelines acceptability at EU level
 - general version, and UTS version
 - <http://www.resolute-eu.org/index.php/deliverables>
- **CRAMSS** – (tools and algorithms) – ontology based static and dynamic CI data integration, processing and analysing platform
- **Mobile Emergency app** – (tools and procedures) – supporting users in their local decision before (early warnings), during and after an event
- **Game based training app** – (tools and procedures) – improving the current preparedness of the citizen in order to increase the community self-resilience





European Resilience Management Guidelines

For Critical Infrastructure (e.g. Transport System, Energy, Water, Oil, etc.)



- FRAM: Functional Resonance Analysis Method
- RAG: Resilience Analysis Grid, a resilience measurement and monitoring tool



UNIVERSITÀ
DEGLI STUDI
FIRENZE

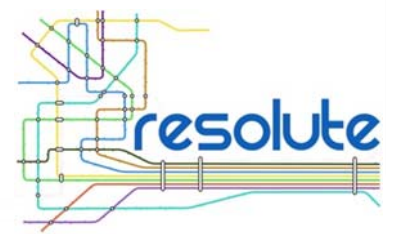
DINFO
DIPARTIMENTO DI
INGEGNERIA
DELL'INFORMAZIONE

DISIT
DISTRIBUTED SYSTEMS
AND INTERNET
TECHNOLOGIES LAB
<http://www.disit.org>

FRAM view



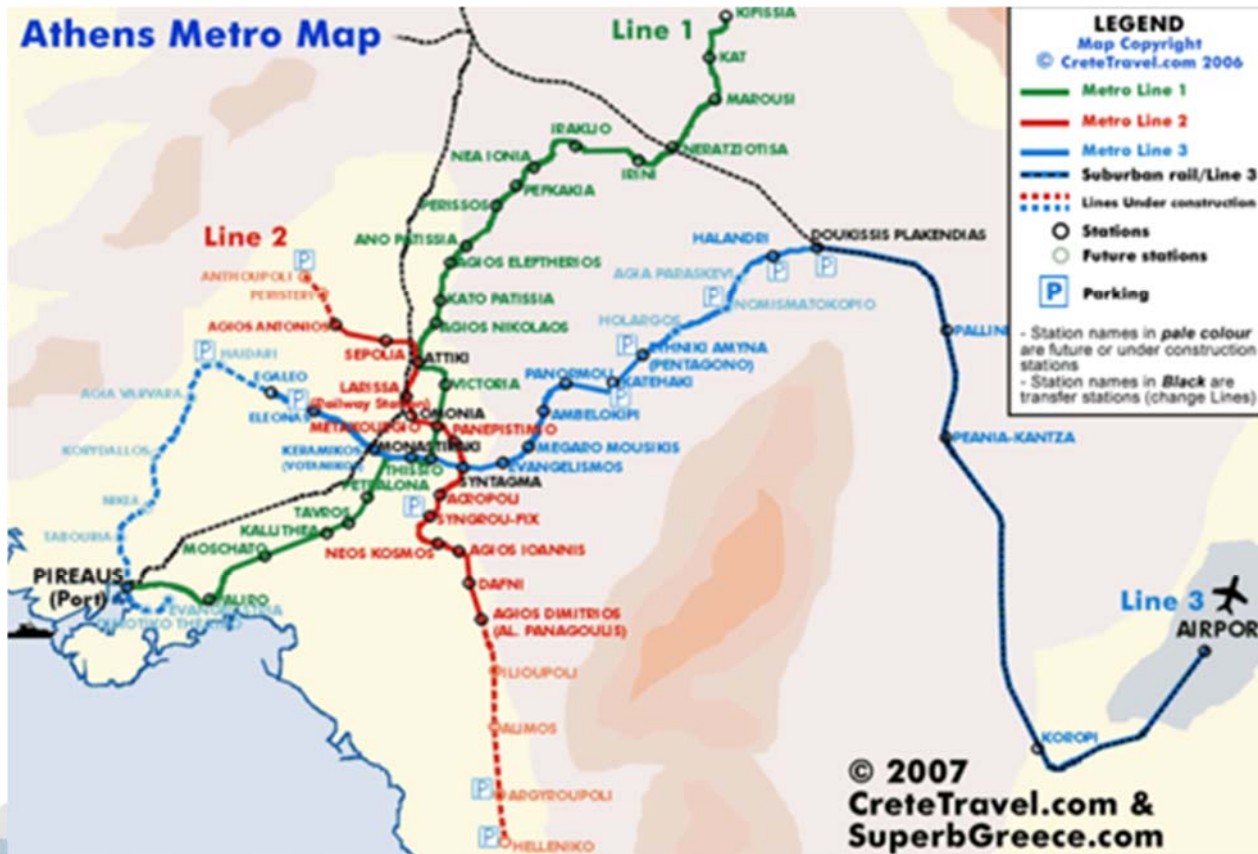
Horizon 2020
European Union Funding
for Research & Innovation



- **Level I:** comparing “desired functions” defined in ERMIG against functions in place through a FRAM analysis of the
 - **CIs, Critical Infrastructures addressed.**
- **Level II:** assessing how functions implemented in the CIs are actually aligned with the ERMIG recommendations.
- **Level III:** assessing function interdependencies. The ERMIG provides a number of desired interdependencies capable to increase system resilience.



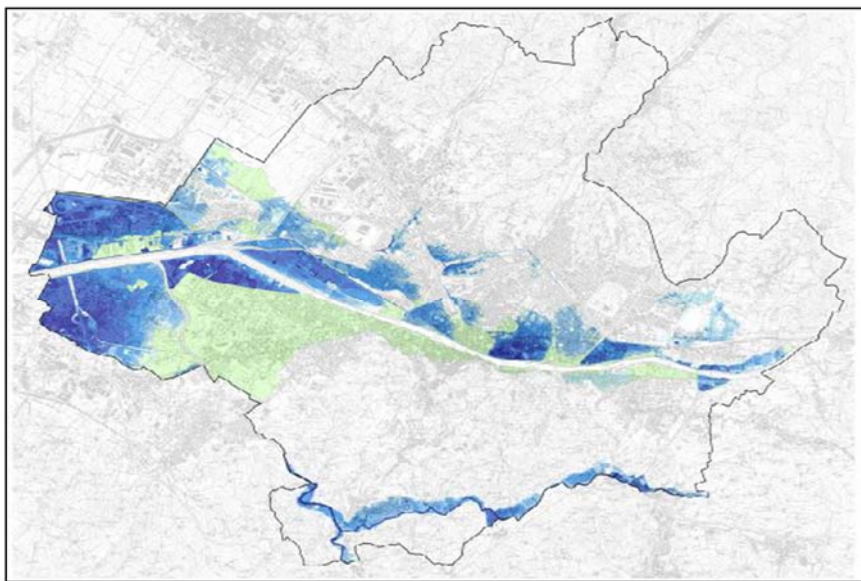
Athens Pilot



98Km of lines
65 stations
1M travelers per day



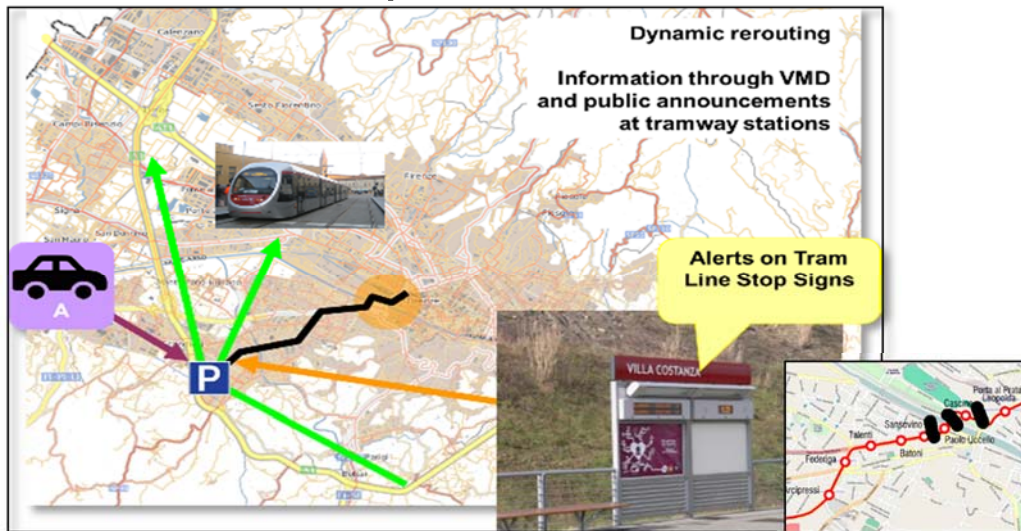
200 years probability Arno flooding



30 years probability Arno flooding



Arno Flood Impact on Tram Line & Traffic



Water bomb in South Florence





UNIVERSITÀ
DEGLI STUDI
FIRENZE

DINFO
DIPARTIMENTO DI
INGEGNERIA
DELL'INFORMAZIONE

DISIT
DISTRIBUTED SYSTEMS
AND INTERNET
TECHNOLOGIES LAB
<http://www.disit.org>

RESOLUTE Architecture



RESOLUTE RESILIENCE Dashboard

Presentation &
Visualization



User
guidance

FRAM → ResilienceDS

CRAMSS

FRAM
operalization



RESOLUTE
Mobile APPs

ITS DSS

Smart DS

Evacuation
DSS

Decision
support
system



Application
framework

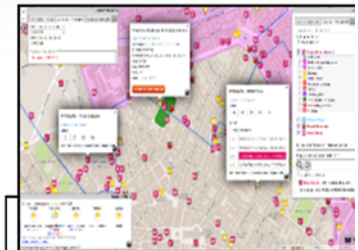
Algoritms and models

Data Integration APIs

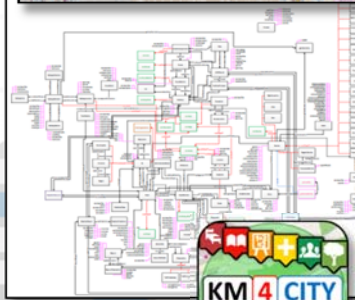
User Profiler APIs

User profiler

Integration
framework



Data and Service Aggregator



Horizon 2020
European Union Funding
for Research & Innovation



The Resilient City, Genoa Smart Week, May 2016





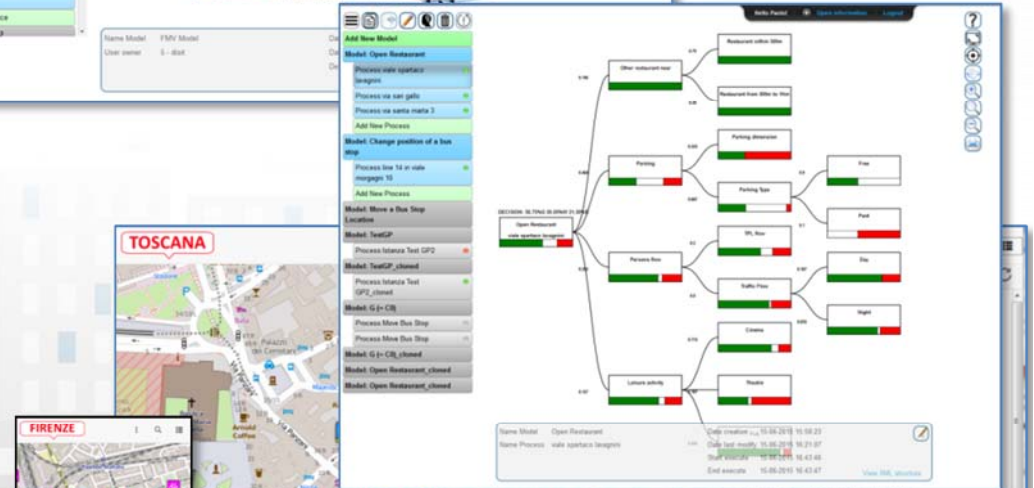
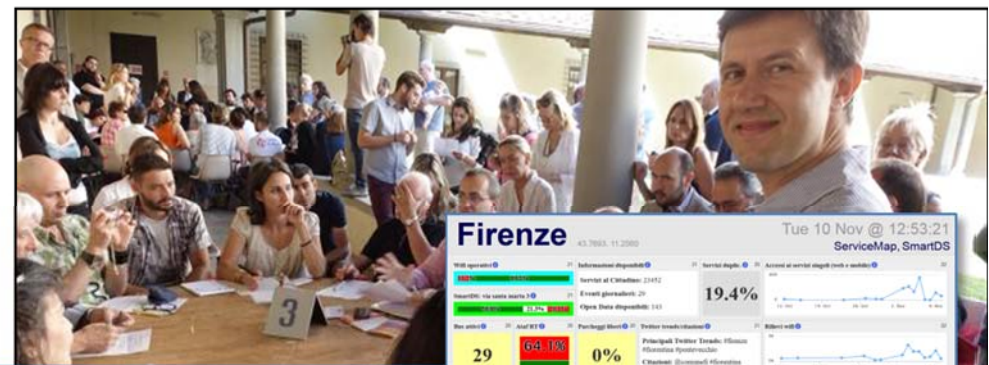
UNIVERSITÀ
DEGLI STUDI
FIRENZE

DINFO
DIPARTIMENTO DI
INGEGNERIA
DELL'INFORMAZIONE

DISIT
DISTRIBUTED SYSTEMS
AND INTERNET
TECHNOLOGIES LAB
<http://www.disit.org>

Improve city resilience, reducing risks and decision support

- **assessing city resilience level**
 - Resilience Decision Support, <http://resilienceds.km4city.org>
 - Smart decision support system, <http://smartds.km4city.org>
- **improving city users awareness with personal city assistants and participatory tools**
 - Dashboard: <http://dashboard.km4city.org>
 - Km4City Web App <http://www.km4city.org>
 - Km4City Mobile App: <http://www.km4city.org/app>



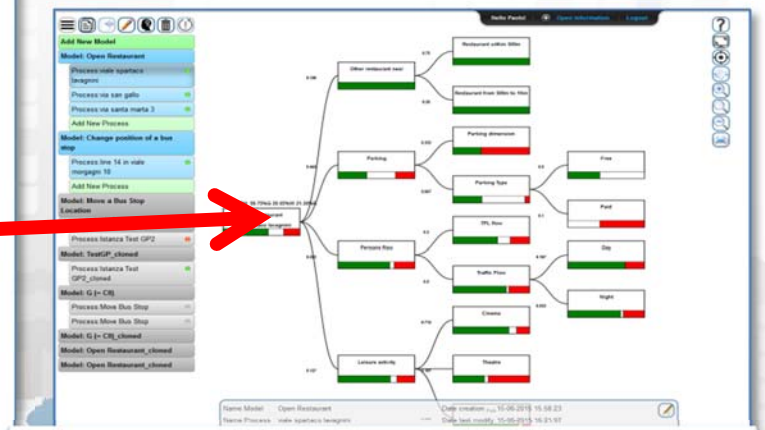
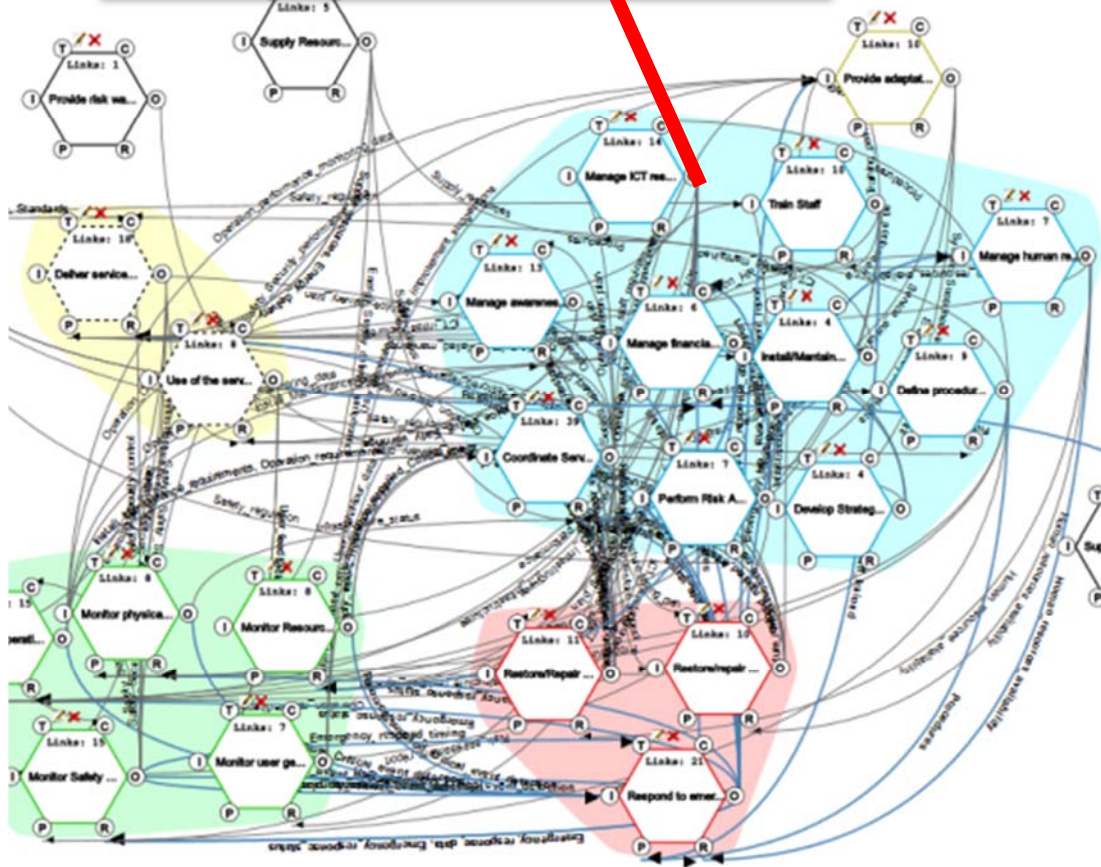
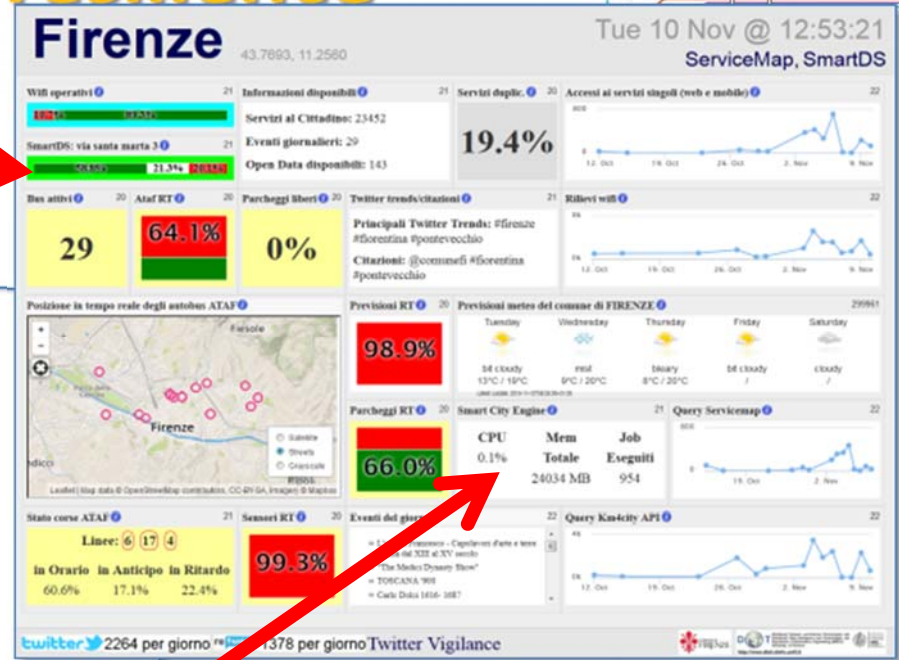
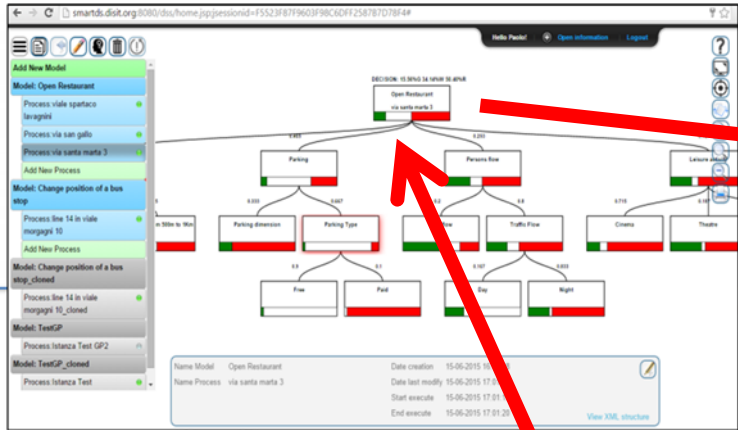


UNIVERSITÀ
DEGLI STUDI
FIRENZE

DINFO
DIPARTIMENTO DI
INGEGNERIA
DELL'INFORMAZIONE

DISIT
DISTRIBUTED SYSTEMS
AND INTERNET
TECHNOLOGIES LAB
<http://www.disit.it>

Dashboarding city resilience



Data and Service Aggregator

The Resilient City, Genoa Sma



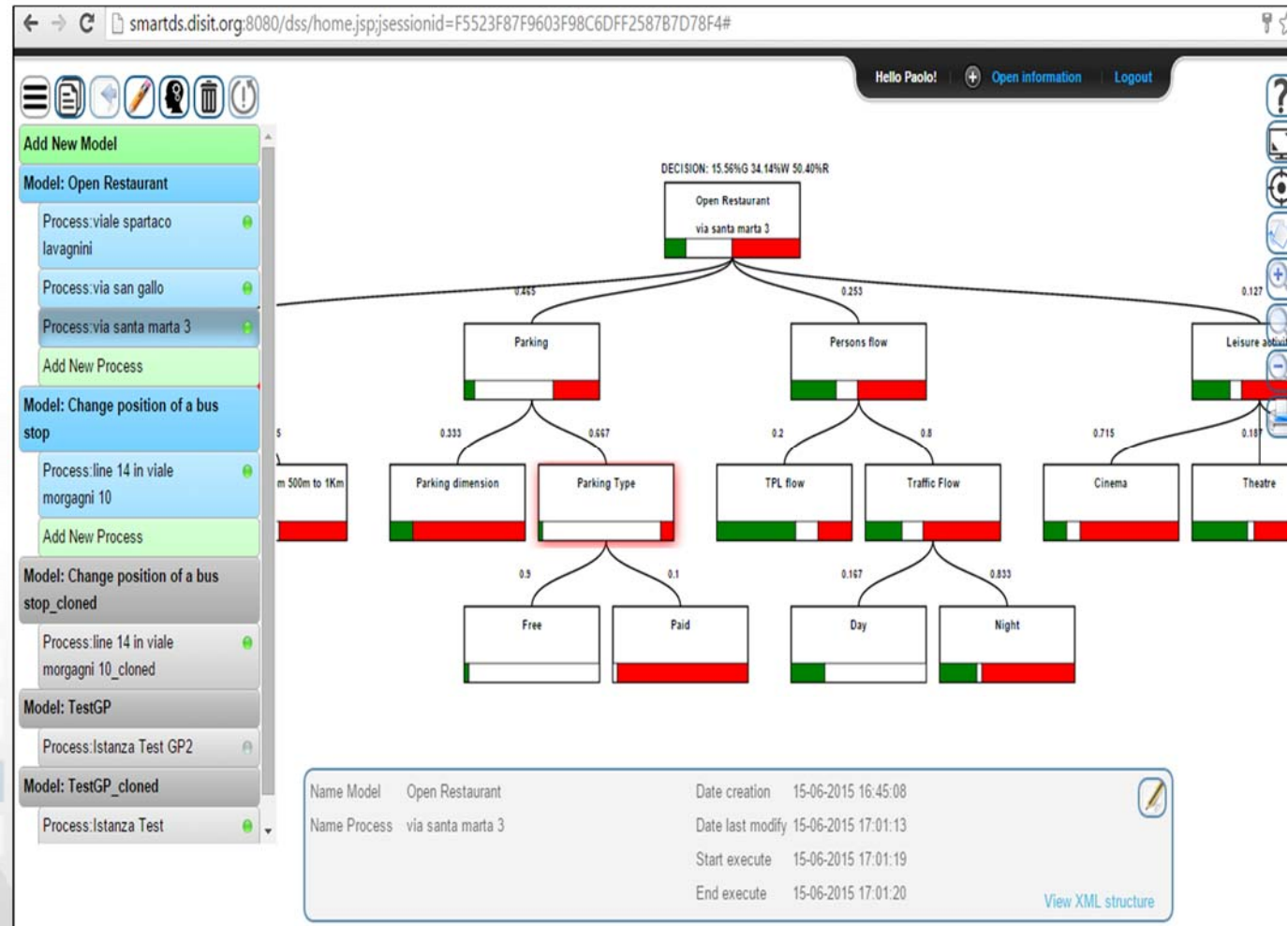
Smart Decision Support



- **Smart Decision Support System based on System Thinking plus**
- Actions to city reaction, resilience, smartness..

Enforcing

- Mathematical model for propagation of decision confidence..
- Collaborative work...,
- Processes connected to city data: DB, RDF Store, Twitter, etc.
- Production of alerts/alarms
- Data analytics process
- Twitter Processes
- reuse, copy past, ...



Data and Service Aggregator





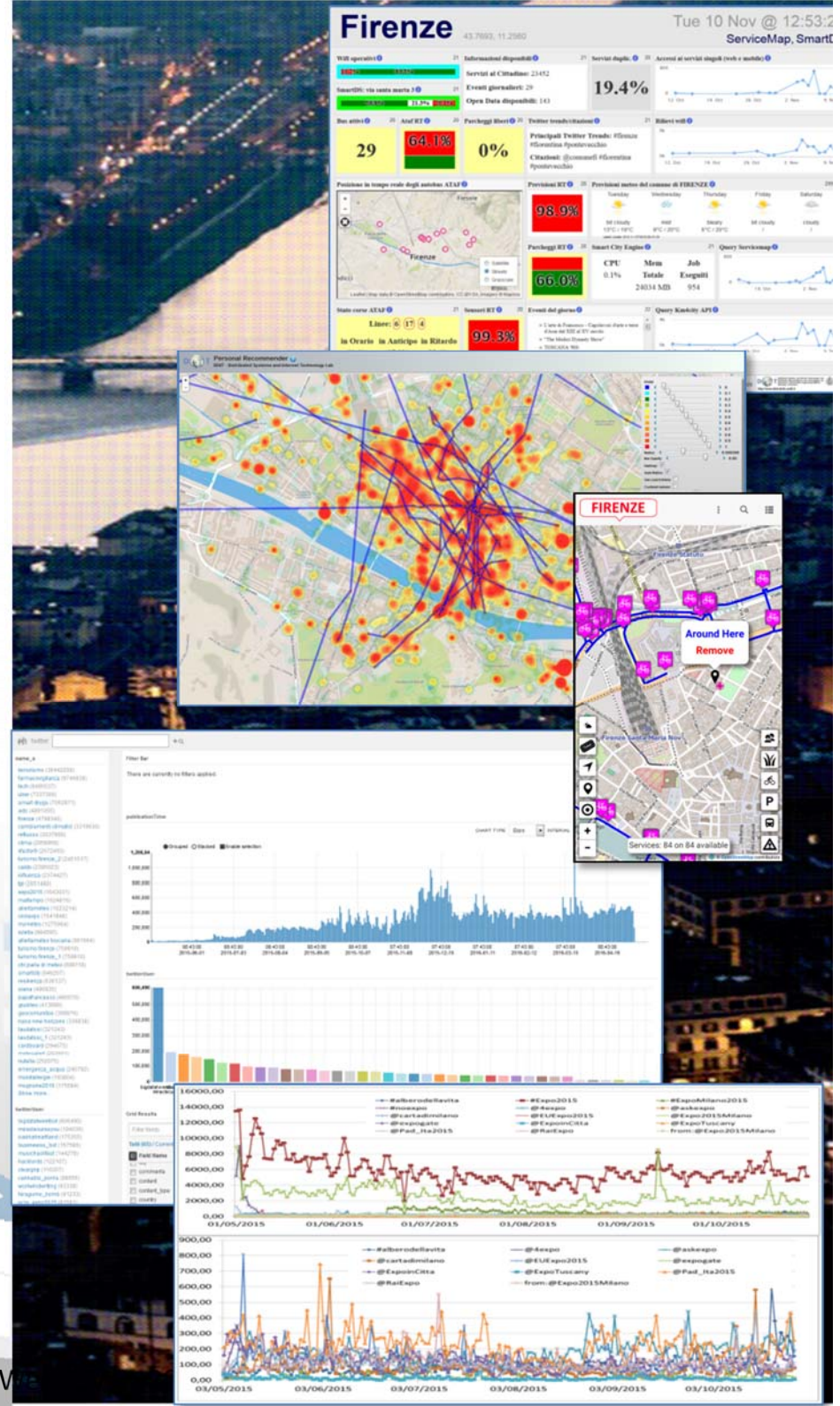
UNIVERSITÀ
DEGLI STUDI
FIRENZE

DINFO
DIPARTIMENTO DI
INGEGNERIA
DELL'INFORMAZIONE

DISIT
DISTRIBUTED SYSTEMS
AND INTERNET
TECHNOLOGIES LAB

<http://www.disit.org>

- **monitoring and taking info account services' status of city operators**
 - <http://dashboard.km4city.org>
- **monitoring and understanding the city users behaviour**
 - Recommender and User Behavior Analyzer
 - Origin Destination matrix tools
- **collecting moods, contributions and data from the city users**
 - from Mobile App Km4City Firenze dove Cosa
 - from social media for city services and events, event predictions
 - <http://www.disit.org/tv> , <http://tvsolr.disit.org>



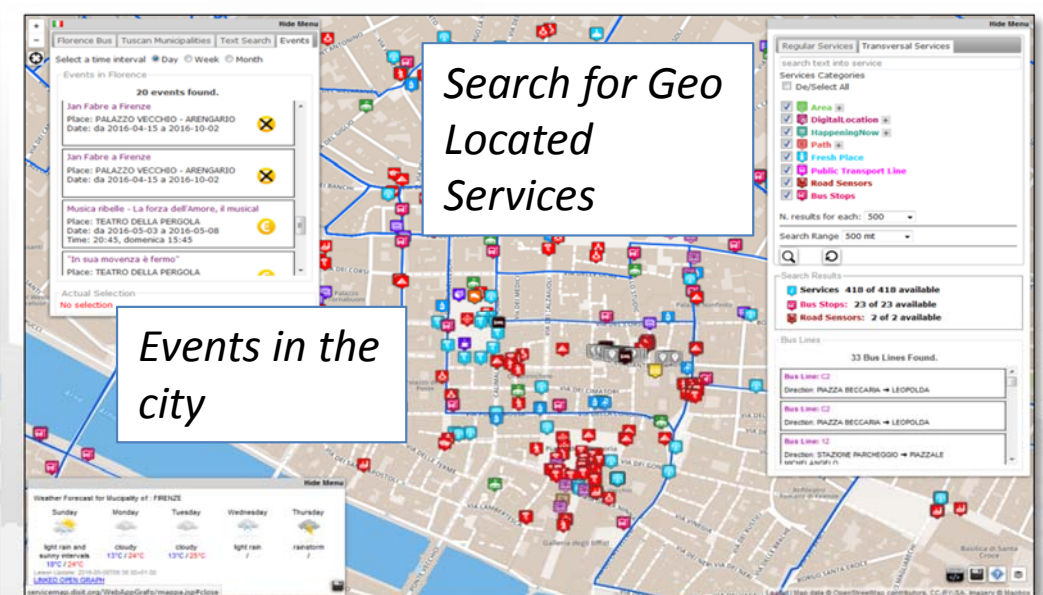
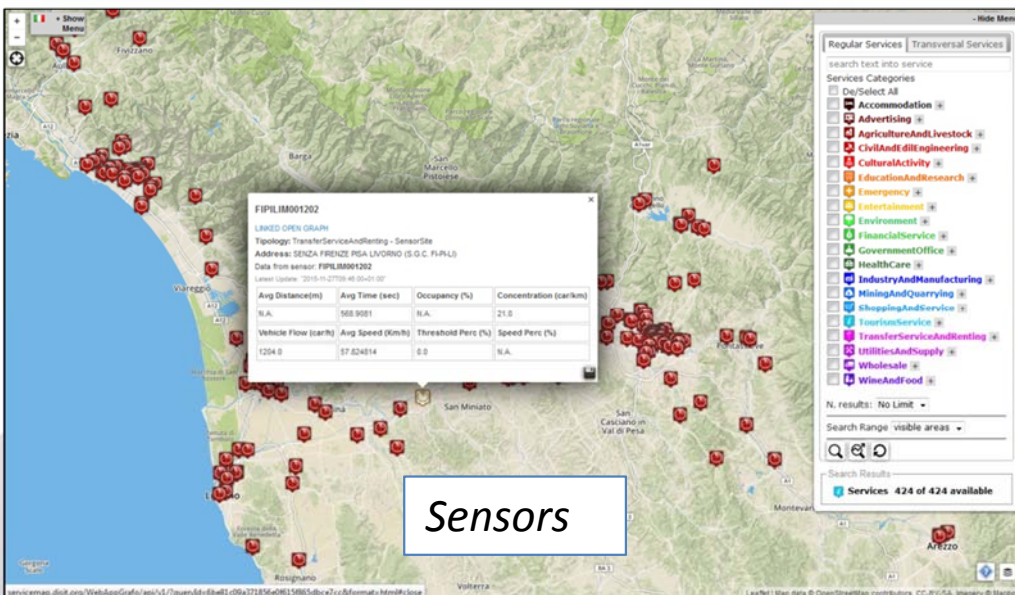
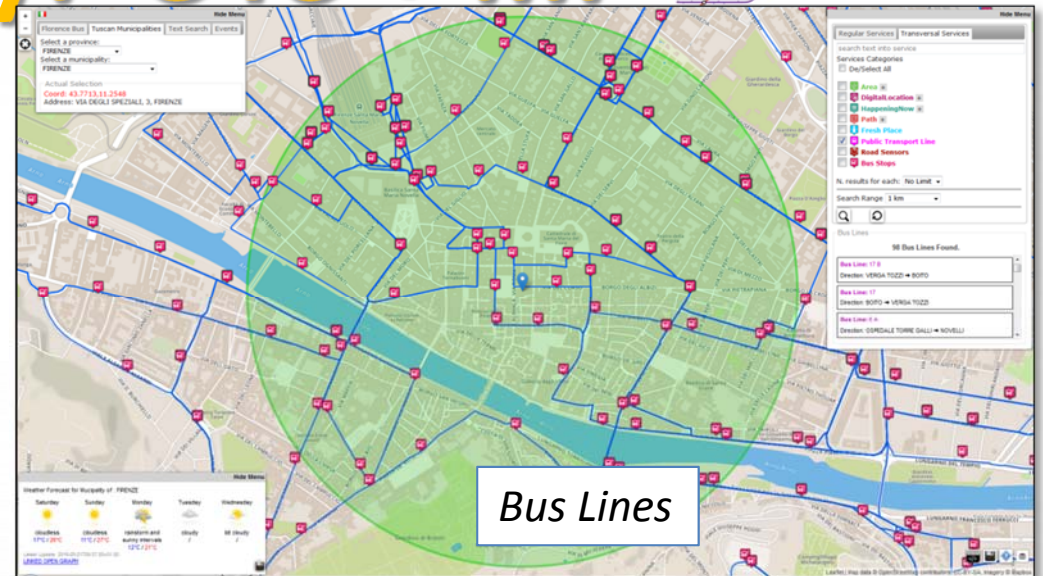
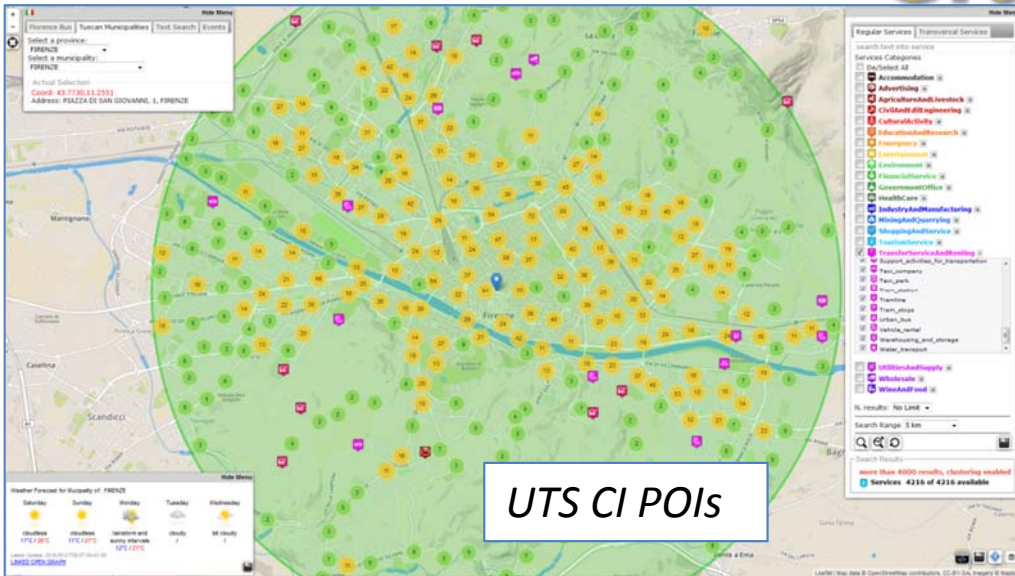


UNIVERSITÀ
DEGLI STUDI
FIRENZE

DINFO
DIPARTIMENTO DI
INGEGNERIA
DELL'INFORMAZIONE

DISIT
DISTRIBUTED SYSTEMS
AND INTERNET
TECHNOLOGIES LAB
<http://www.disit.org>

Firenze Smart City: UTS +





UNIVERSITÀ
DEGLI STUDI
FIRENZE

DINFO
DIPARTIMENTO DI
INGEGNERIA
DELL'INFORMAZIONE

DISIT
DISTRIBUTED SYSTEMS
AND INTERNET
TECHNOLOGIES LAB
<http://www.disit.org>

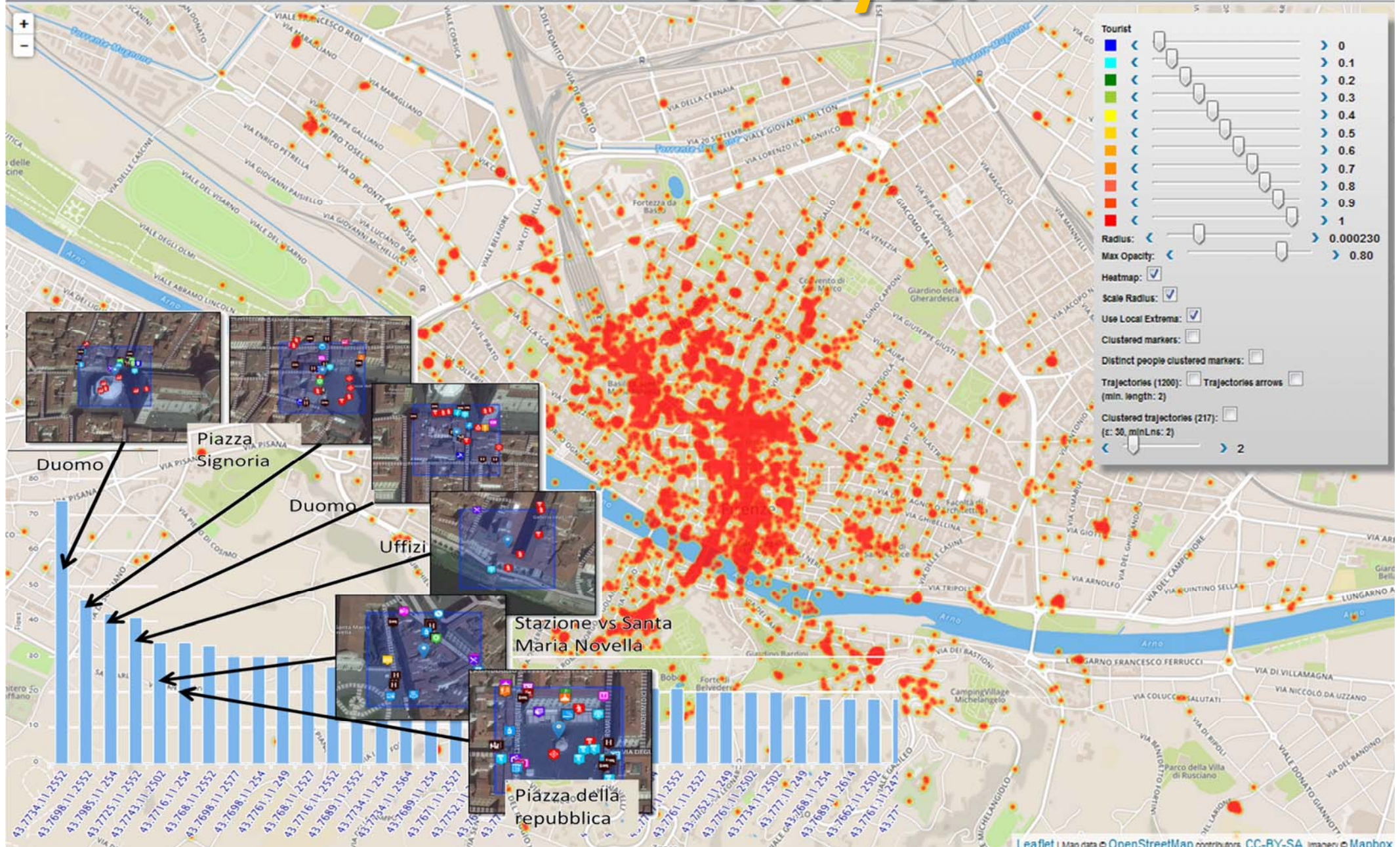
User Behavior



Personal Recommender

DISIT - Distributed Systems and Internet Technology Lab

Analyzer





UNIVERSITÀ
DEGLI STUDI
FIRENZE

DINFO
DIPARTIMENTO DI
INGEGNERIA
DELL'INFORMAZIONE

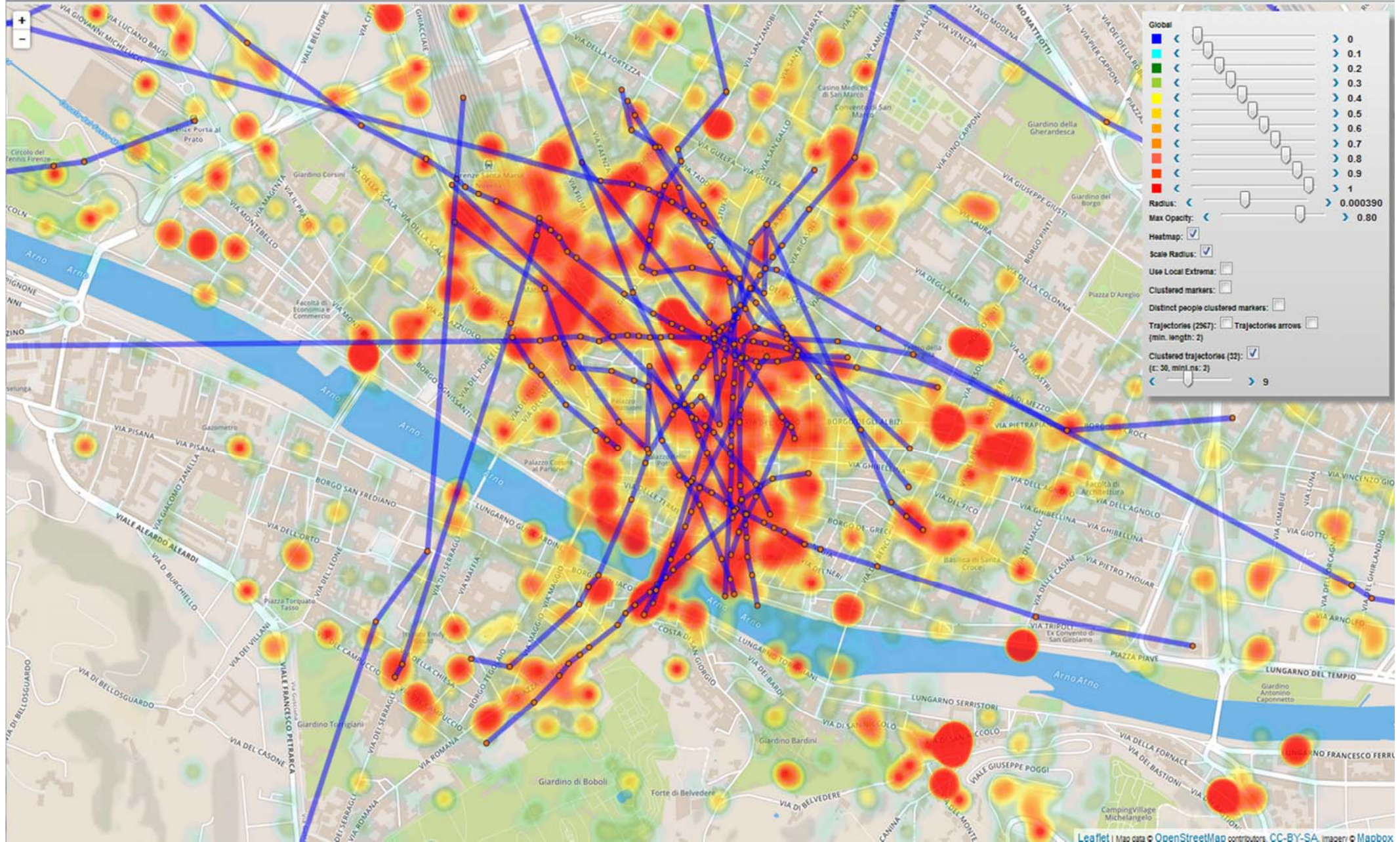
DISIT
DISTRIBUTED SYSTEMS
AND INTERNET
TECHNOLOGIES LAB
<http://www.disit.org>

User Behavior



DISIT Personal Recommender
DISIT - Distributed Systems and Internet Technology Lab

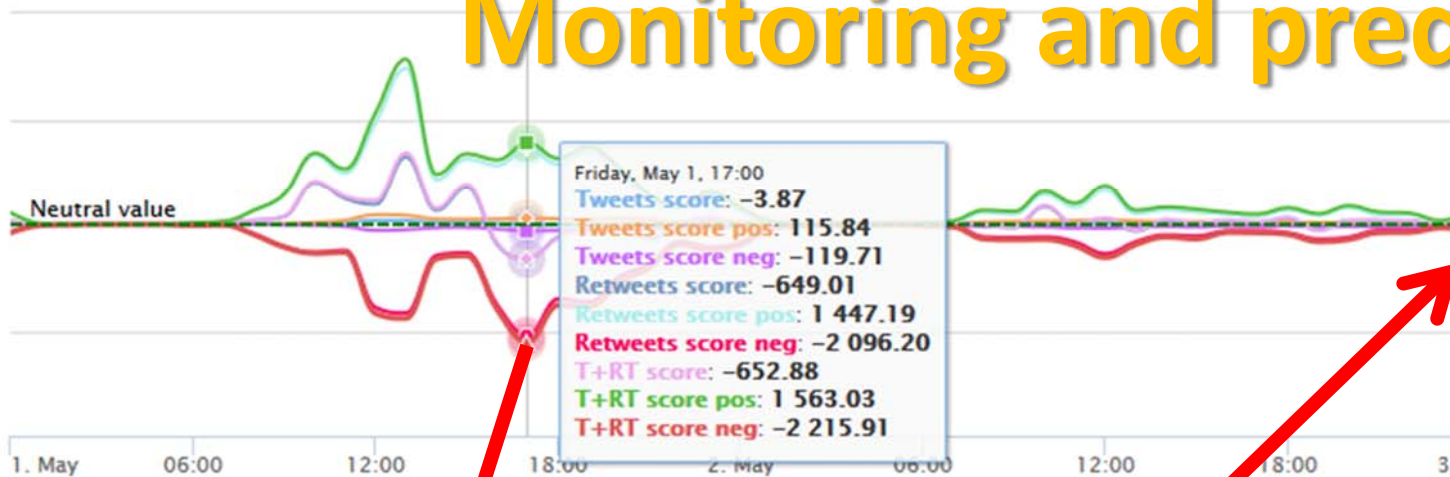
Analyzer



Twitter Vigilance, Sentiment Analysis, Monitoring and prediction

Zoom 1m 3m 6m YTD 1y All

From May 1, 2015 To May 3, 2015



SERENA SÌ
 @SerenaSignorie

Fermate queste bestie. Animali, incivili, ignoranti, mostri. Fateschifo. Mi vergogno di essere italiana. #noexpo #Expo2015

Results 1 - 1 of 1:

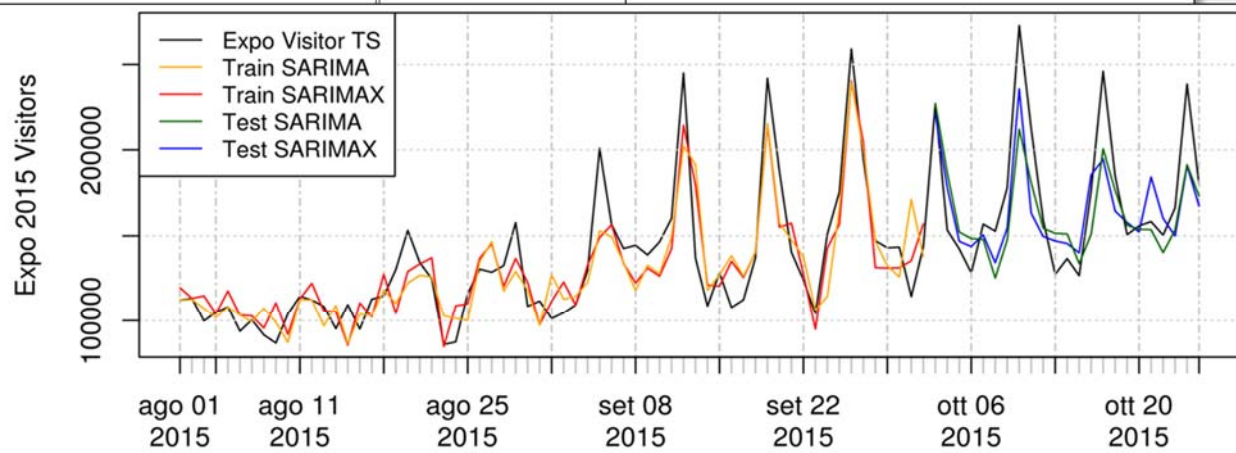
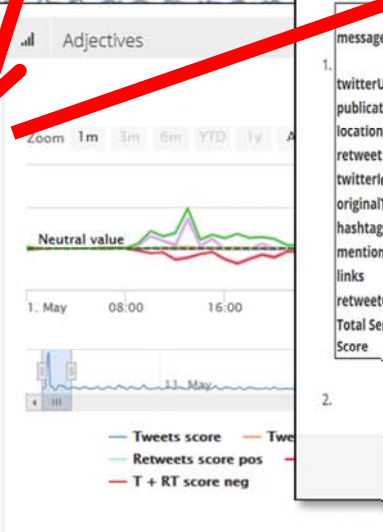
message: Fermate queste bestie. Animali, incivili, ignoranti, mostri. Fateschifo. Mi vergogno di essere italiana. #noexpo #Expo2015 http://t.co/PUo3kR...

twitterUser: SerenaSignorie
 publicationTime: 2015-05-01 18:29:06
 locationUser: 0
 retweet: 0

Results 1 - 11:

message: Non sei d'accordo quindi macchine di gente che v... Schifo totale #Expo2015

twitterUser: FabrizioColella
 publicationTime: 2015-05-01 18:53:09
 locationUser: In Billico
 retweet: 0



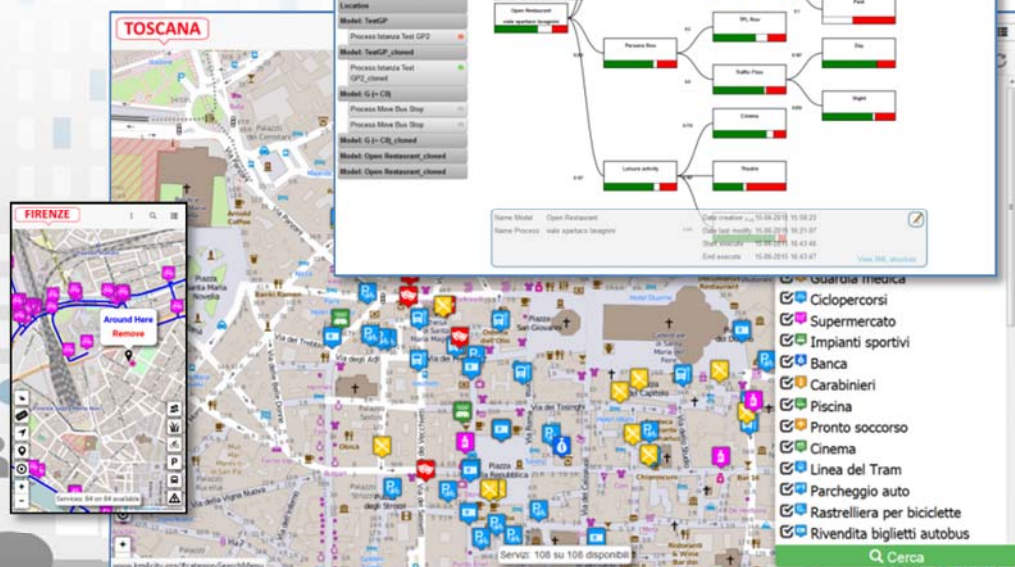
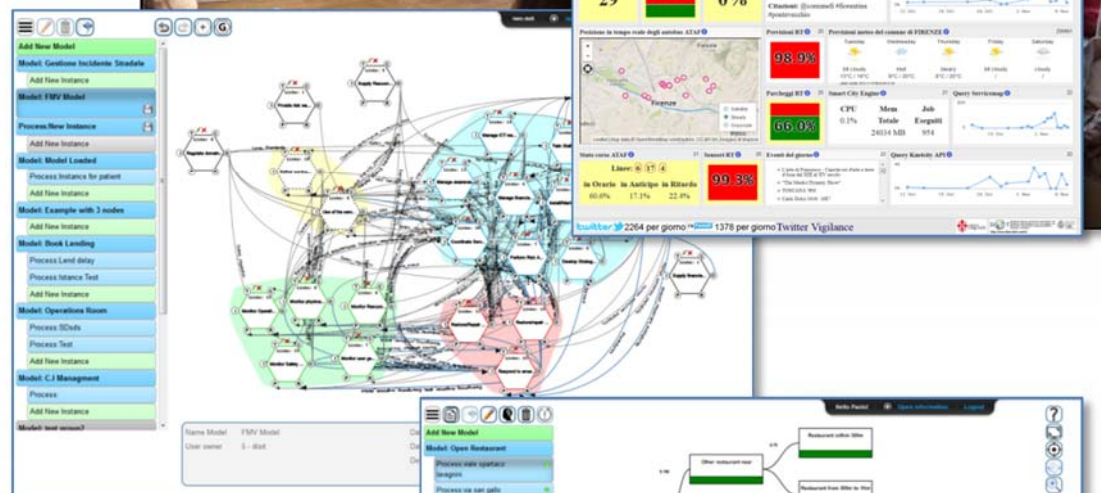
Training: 01-08-2015/02-10-2015 63 DD
 Test period: 03-10-2015/25-10-2015 22 DD

Figure 5: Comparison among the selected predictive models discussed and presented in Tables 2 and 3 with respect to the real number of visitors. Both training and validation periods are reported.

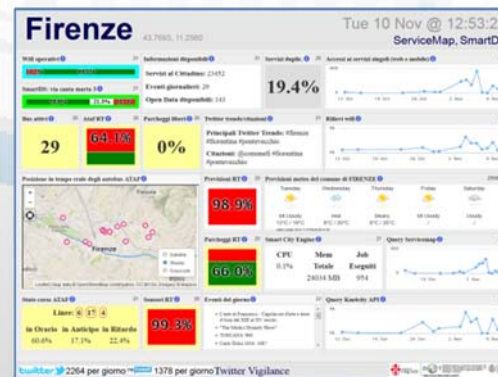
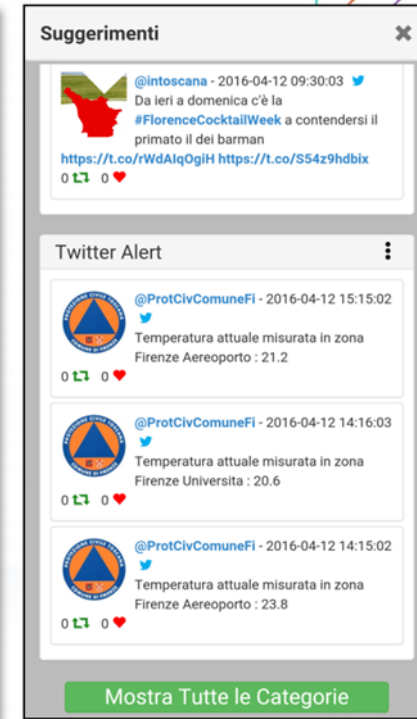
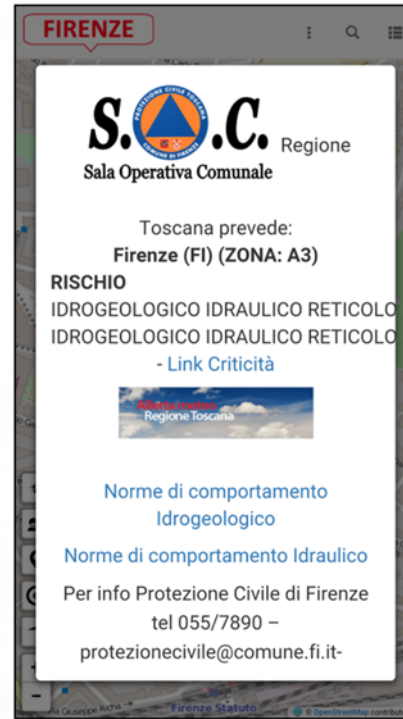
#EXPO2015 search Twitter Vigilance

Improve city resilience, reducing risks and decision support

- **assessing city resilience level**
 - Resilience Decision Support, <http://resilienceds.km4city.org>
 - Smart decision support system, <http://smartds.km4city.org>
- **improving city users awareness with personal city assistants and participatory tools**
 - Dashboard: <http://dashboard.km4city.org>
 - Km4City Web App <http://www.km4city.org/webapp>
 - Km4City Mobile App: <http://www.km4city.org/app>



- Personalized menu for Operators
- Providing information and suggestions to citizens
 - Civil Protection Page
 - Twitter Info
 - Geolocalized Info
- Tracking people and operators flows
- Collecting information from citizens
 - Comments
 - Images



<http://www.km4city.org>



UNIVERSITÀ
DEGLI STUDI
FIRENZE

DINFO
DIPARTIMENTO DI
INGEGNERIA
DELL'INFORMAZIONE

DISIT
DISTRIBUTED SYSTEMS
AND INTERNET
TECHNOLOGIES LAB



GET IT ON
Google play

Download on the
App Store

Download from
Windows Phone Store



KM4CITY
FROM DATA TO SERVICES
FOR SENTIENT CITIES

TRANSFORMING DATA INTO VALUE FOR THE CITY

- aggregating data and services for SME and city operators
- supporting the decision process for SME and city operators
- enabling a wide range of commercial and business applications
- monitoring and analyzing the performance of business and services network
- building integrated city services and third party web portal for all
- enabling the operators' collaboration and innovation
- monitoring and controlling the network

Service Map	Bus Stops	Real Time Busses	Traffic Sensors	Services in Toscana	Services in Florence	Services in Pisa	Green Areas	BusLines	Hotels
Dashboard	Dashboard Mugnone2016	Monitoring City Users	Monitoring Wi-Fi Coverage	Resilience Decision Support	Smart Decision Support	Tourists Hit Map	Florence Downtown	Events in Florence	Km4City WebApp
Recommendations	Twitter Vigilance	Real Time Twitter Vigilance	Twitter Search	City User Hit Map	Tourists Hit Map		Km4City Video App	Km4City Video 2015	Km4City Video 2015
Linked Open Graph, LOD	SPARQL and Licenses	Km4City Ontology	Km4City Smart City API			DISIT Lab	Km4City InfoPage	Km4City InfoPage	Km4City Projects
							Km4City Slides		

Transport systems
Mobility, parking



Public Services
Govern, events,



Sensors, IOT
Cameras, ..



Environment,
Water, energy



Shops, services,
operators



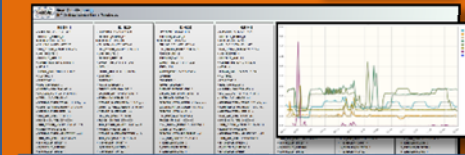
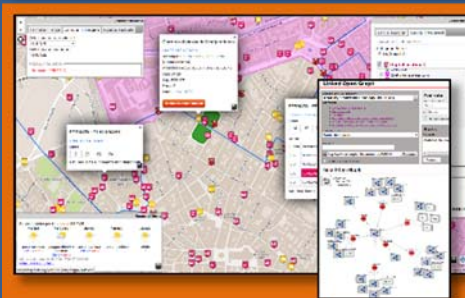
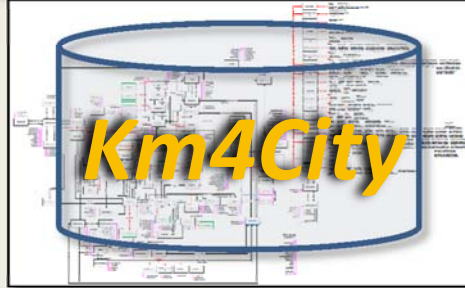
Social Media
WiFi, network



Static, Slow and Real Time data flows

DISCES -- Distributed and parallel architecture on Cloud

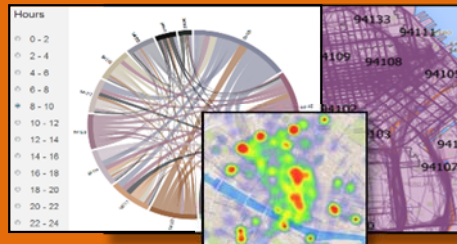
Km4City Smart City Engine



User Profiling and Suggestions on Demand

Flow and Origin Destination Matrix

<http://www.disit.org/odsf>



Km4City Tools for Developers

<http://www.km4city.org>

Km4City Smart City API

Tools for City Operators and Decision Makers

Smart City Dashboard

<http://dashboard.km4city.org/>

Smart Decision Support

<http://Smartds.km4city.org>

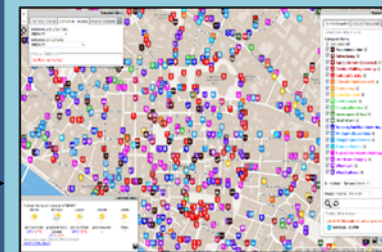


Service map browser

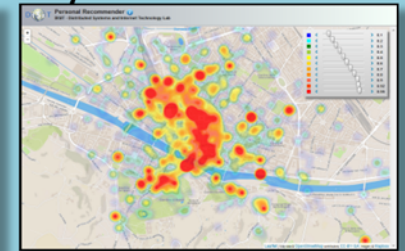
<http://servicemap.km4city.org>

Twitter Vigilance

<http://www.disit.org/tv>



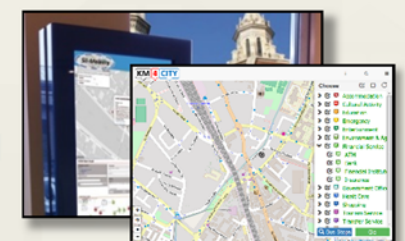
Collective User behavior Analyzer



Tools for Final Users

Mobile e Web Apps

<http://www.km4city.org/webapp>

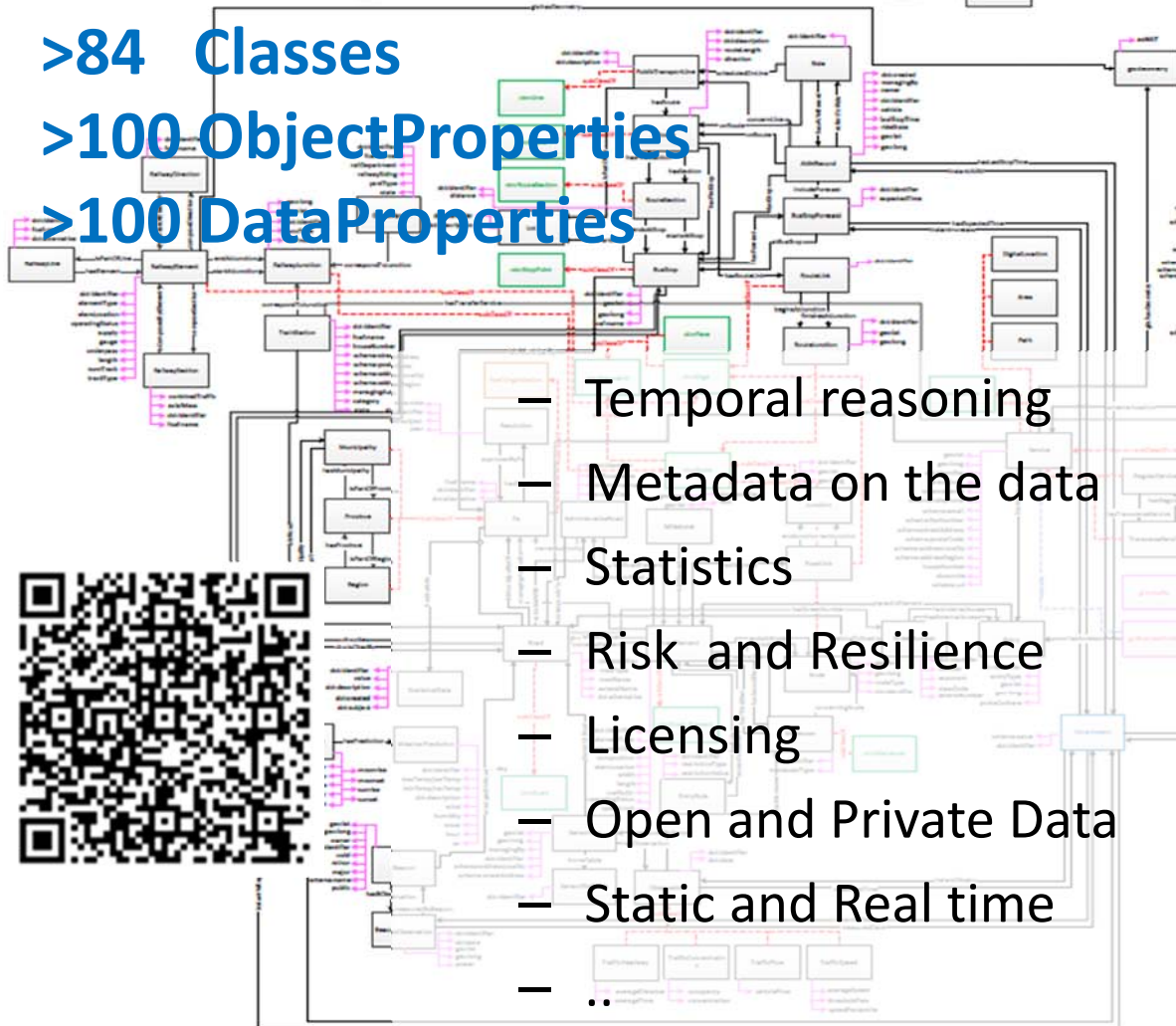


<http://www.km4city.org/app>



Km4City Smart CityOntology

- >84 Classes
- >100 Object Properties
- >100 Data Properties



- Temporal reasoning
- Metadata on the data
- Statistics
- Risk and Resilience
- Licensing
- Open and Private Data
- Static and Real time
- ..

- to cover different aspects:

- Administration
- Street-Guide
- Points of interest
- Citations from strings
- Mobility and transport
- Energy
- Sensors..
- ..

Ontology Documentation:

<http://www.disit.org/6506>

<http://www.disit.org/6507>

<http://www.disit.org/5606>

<http://www.disit.org/6461>



UNIVERSITÀ
DEGLI STUDI
FIRENZE

DINFO
DIPARTIMENTO DI
INGEGNERIA
DELL'INFORMAZIONE

DISIT
DISTRIBUTED SYSTEMS
AND INTERNET
TECHNOLOGIES LAB
<http://www.disit.org>



Projects based on KM4City

- Sii-Mobility, <http://www.sii-mobility.org>



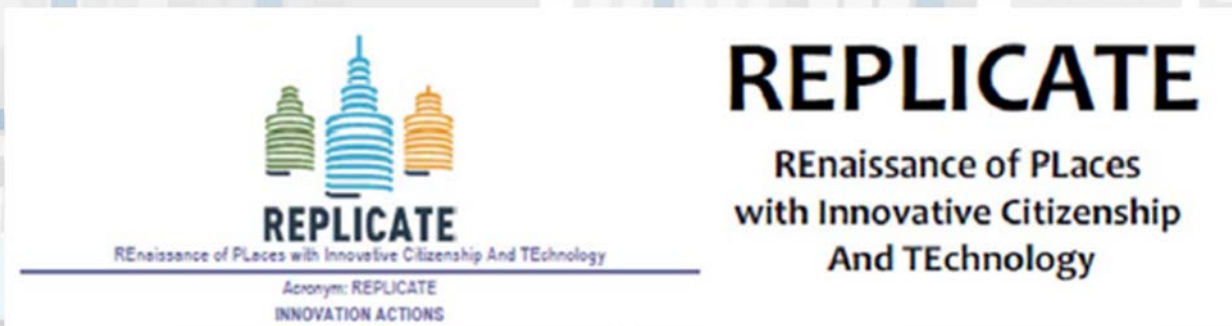
- Resolute, <http://www.resolute-eu.org>



RESilience management guidelines
and **O**perationalization app**L**ied to
Urban **T**ransport **E**nvironment



- Replicate, <http://www.disit.org/6778>





UNIVERSITÀ
DEGLI STUDI
FIRENZE

DINFO
DIPARTIMENTO DI
INGEGNERIA
DELL'INFORMAZIONE

DISIT
DISTRIBUTED SYSTEMS
AND INTERNET
TECHNOLOGIES LAB
<http://www.disit.org>



Thank You for Your attention!

Prof. Paolo Nesi, Dott. Emanuele Bellini

RESOLUTE Coordinator

DISIT Lab: <http://www.disit.org>

Department of Information Engineering

University of Florence, Italy

Office: +39-055-275-8515

LAB: +39-055-275-8516 / 8517

Fax: +39-055-275-8570

Paolo.nesi@unifi.it, Emanuele.bellini@unifi.it



Horizon 2020
European Union Funding
for Research & Innovation



The Resilient City, Genoa Smart Week, May 2016

