



The language of innovation II Forum
Architecture and Urban Planning IV Forum

TJU Shanghai CHINA - UNIFI ITALY
Confucius Institute

ICT Solution for Smart City Urban Platform

Paolo Nesi

University of Florence, DINFO, DISIT lab

<http://www.disit.dinfo.unifi.it>

Paolo.nesi@unifi.it

Smart Cities

15th December 2016

Healthy Cities

16th December 2016

Florence University





UNIVERSITÀ
DEGLI STUDI
FIRENZE

DINFO
DIPARTIMENTO DI
INGEGNERIA
DELL'INFORMAZIONE

DISIT
DISTRIBUTED SYSTEMS
AND INTERNET
TECHNOLOGIES LAB
<http://www.disit.org>

Sentient Urban Platform for Smart City

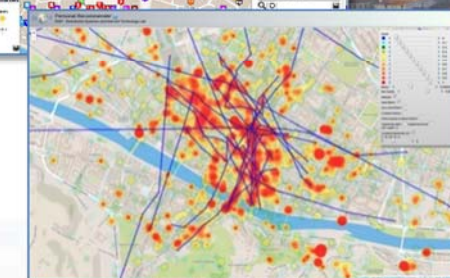
- **Main Objectives:**
 - **Increase: quality of life, quality of services, ...**
 - reduce pollution, traffic congestion, ...
 - **Keep under control the city costs for services and operators**
 - mobility, energy, health, waste, environment, ...
 - **Reduce the risks and increase resilience**
 - with respect to natural and artificial threats
- **Set up an ICT based Urban Platform *integrated and unified data management among services, city operators and city users:***
 - **Control Room, Real Time Monitoring of KPI, ..**
 - **Data analytics and business intelligence**
 - **Reading the city: data, users behavior and needs, etc.**
 - **Stimulate virtuous behavior of City Users**
 - **Transform Data into value**





Sentient Urban Platform for Smart City

- Set up an ICT based Urban Platform integrated and unified data management among services, city operators and city users:
 - **Control Room, Real Time Monitoring**
 - decision support, assessing and monitoring risk and resilience
 - **Data analytics and business intelligence**
 - predictions, reasoning, city users behavior analysis,
 - **Reading the city: data, users behavior and needs, ...**
 - IOT, Open data sensors, private data, static and real time data.
 - **City Strategies: stimulate virtuous behavior of City Users**
 - participation, totem, twitter, Apps, etc.
 - **Transform Data into value**
 - Put in action smart city innovative solutions and services, development tools



Sentient City Control Room

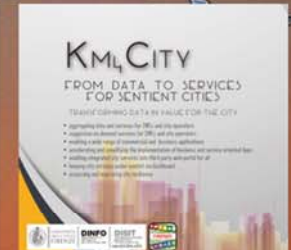
www.Km4City.org



UNIVERSITÀ
DEGLI STUDI
FIRENZE

DINFO
DIPARTIMENTO DI
INGEGNERIA
DELL'INFORMAZIONE

DISIT
DISTRIBUTED SYSTEMS
AND INTERNET
TECHNOLOGIES LAB



Home Sentient City Control Room City Users Tools Back Office and Dev Tools Info and Docs

Real Time Monitoring Tools for Control Room Dashboards

 Real Time Control Room Dashboard ⓘ	 Monitoring City Users by Wi-Fi (*) ⓘ	 Monitoring City Users Behaviour via Mobile App (*) ⓘ	 Monitoring Real Time Data on 3D: traffic and parking (*) ⓘ	 Monitoring Parking Areas Status in Florence (*) ⓘ	 Monitoring Traffic Sensors in Tuscany Region (*) ⓘ	 Getting moods and alerts via Twitter Sentiment Analysis (*) ⓘ	 Early Warning and Prediction Tools ⓘ	 Smart Decision Support System, SmartDS (*) ⓘ
--	--	--	--	---	--	---	--	--

Smart City Control Room, Dashboard, Real Time Data

The dashboard displays a variety of real-time data visualizations, including: a main overview with a 42.4% indicator and a 44.7% gauge; a list of 21, 20, 27, and 41 items; a 'Km4City' section with values 1790 and 359; a 'FirenzeWi-Fi' section with values 4392, 16915, and 225; a 'SmartCity Processes' section with values 1, 76, and 40; and several line and bar charts representing different data series.

Big Data Analytics Tools, Business Intelligence, Decision Support Tools

 City Resilience Decision Support System, ResilienceDS (*) ⓘ	 City Risk & Vulnerability Analysis Tool ⓘ	 Assessing and Analysing Wi-Fi Coverage (*) ⓘ	 Origin Destination Matrix by Wi-Fi data (*) ⓘ	 City Users Recency and Frequency by Wi-Fi data (*) ⓘ	 City Users Origin Destination Matrix via Mobile App (*) ⓘ	 Heatmaps and Trajectories of City Users Tourists (*) ⓘ	 Analysing City Users' Behavior (*) ⓘ	 Social Media Twitter Vigilance (*) ⓘ	 Twitter Data Analysis Tool (*) ⓘ
---	---	--	---	--	---	--	--	--	--------------------------------------



UNIVERSITÀ
DEGLI STUDI
FIRENZE

DINFO
DIPARTIMENTO DI
INGEGNERIA
DELL'INFORMAZIONE

DISIT
DISTRIBUTED SYSTEMS
AND INTERNET
TECHNOLOGIES LAB
<http://www.disit.org>

Problems and issues

- Cities include **critical infrastructures** strongly related / depended each other:
 - Transport, energy, communication, cyber, health...
- **Risks** for Critical Infrastructures may be due to natural and/or man made events.
- **Urban Transport System**, is one of the most challenging since UTS is the via by which many problems may propagate but also the path used by solutions and the recovery actions.





UNIVERSITÀ
DEGLI STUDI
FIRENZE

DINFO
DIPARTIMENTO DI
INGEGNERIA
DELL'INFORMAZIONE

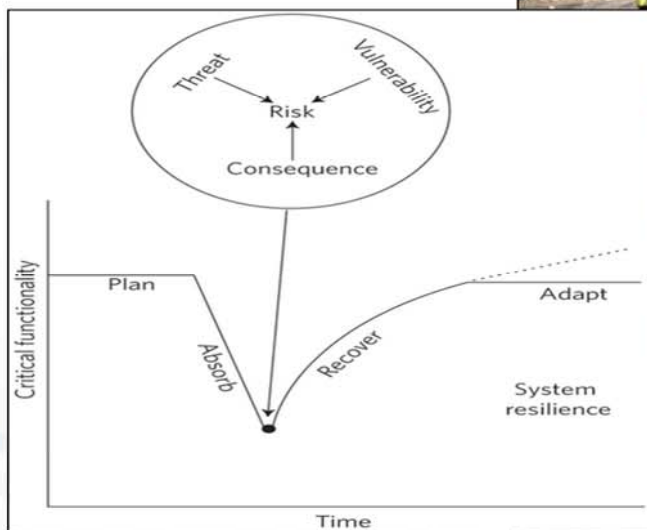
DISIT
DISTRIBUTED SYSTEMS
AND INTERNET
TECHNOLOGIES LAB
<http://www.disit.org>

City Resilience



Horizon 2020
European Union Funding
for Research & Innovation

- P**repare
- A**bsorb
- R**ecover
- A**dapt



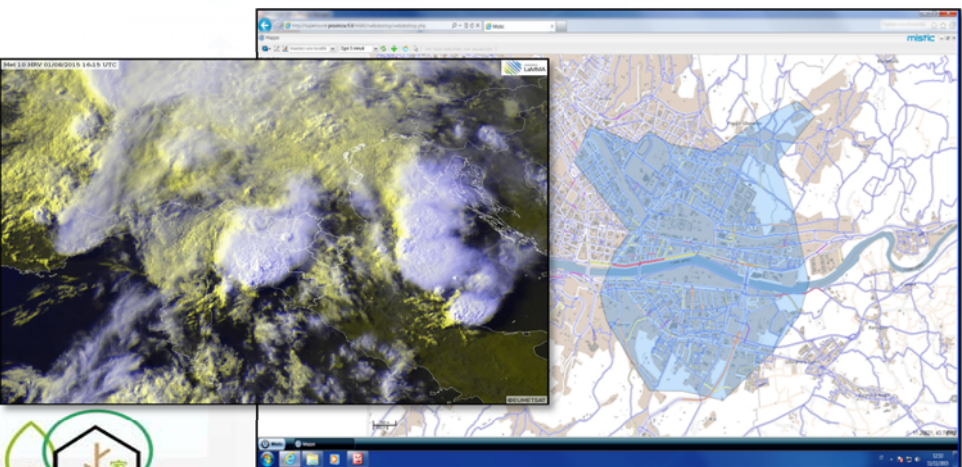
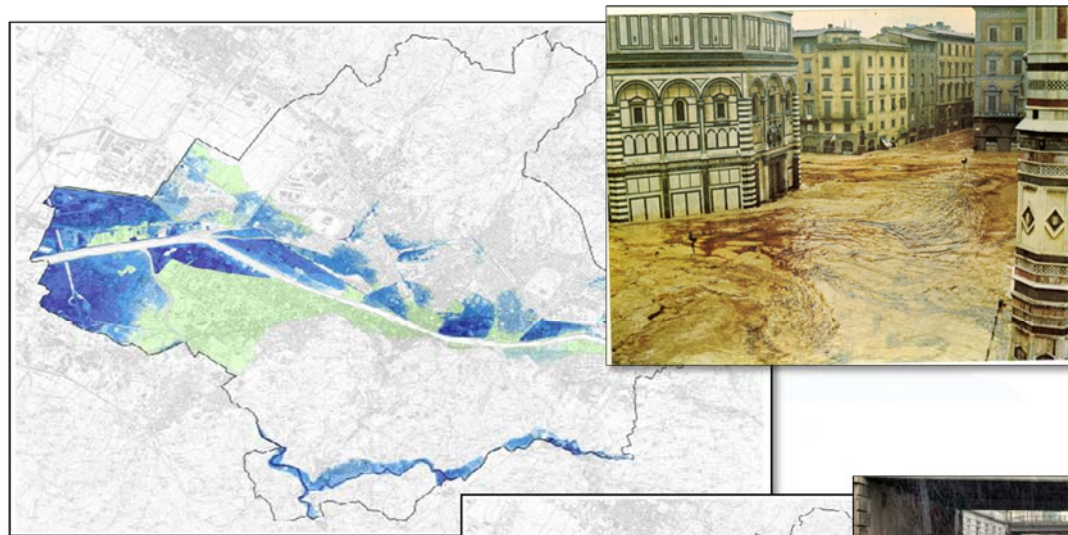
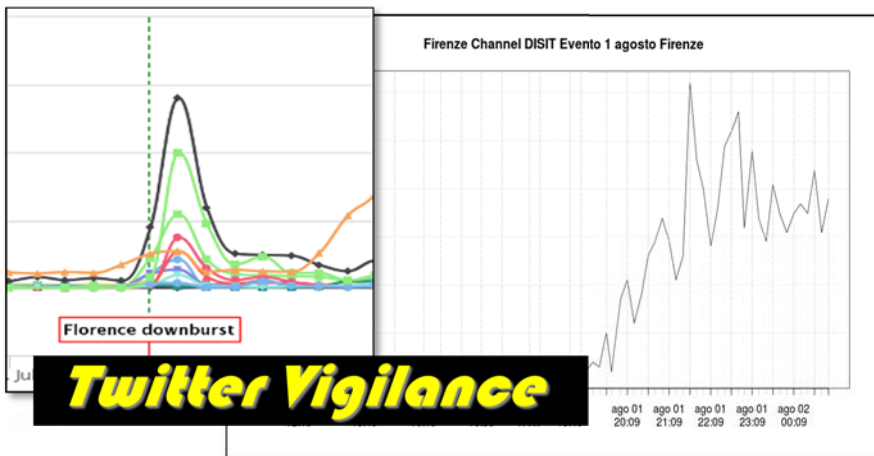


UNIVERSITÀ
DEGLI STUDI
FIRENZE

DINFO
DIPARTIMENTO DI
INGEGNERIA
DELL'INFORMAZIONE

DISIT
DISTRIBUTED SYSTEMS
AND INTERNET
TECHNOLOGIES LAB
<http://www.disit.org>

Early Warning





UNIVERSITÀ
DEGLI STUDI
FIRENZE

DINFO
DIPARTIMENTO DI
INGEGNERIA
DELL'INFORMAZIONE

DISIT
DISTRIBUTED SYSTEMS
AND INTERNET
TECHNOLOGIES LAB
<http://www.disit.org>



Horizon 2020
European Union Funding
for Research & Innovation



Dashboarding city resilience

The image displays a comprehensive dashboard for city resilience monitoring, centered on Florence (Firenze). Key components include:

- Map View:** A geographical map of Florence with red and orange overlays indicating specific areas of interest or risk.
- Network Diagram:** A complex network graph showing interconnected nodes and links, representing the city's infrastructure and service dependencies.
- Firenze Dashboard:** A central dashboard titled 'Firenze' (43,7693, 11,2580) dated 'Tue 10 Nov @ 12:53:21' using 'ServiceMap, SmartDS'. It features:
 - Operational Status:** '29' operators, '64.1%' availability, and '99%' service status.
 - Service Metrics:** '19.4%' for 'Servizi disponibili', '98.9%' for 'Prestazioni servizio del customer di FIRENZE', and '99%' for 'In Orario in Autistiche in Ritardo'.
 - Weather & Social:** Weather forecast for Firenze and a 'twitter' feed showing '2264 per giorno'.
 - System Health:** CPU (0.1%), Mem (0.1%), and Job (Totale) metrics.
- Data and Service Aggregator:** A hierarchical tree view showing various service models and their status, such as 'Open Restaurant', 'Parking', and 'Bus Stop'.
- Logos & Branding:** The 'resolute' logo is present in the bottom right, and 'KM4CITY' is featured in a bottom navigation bar.



UNIVERSITÀ
DEGLI STUDI
FIRENZE

DINFO
DIPARTIMENTO DI
INGEGNERIA
DELL'INFORMAZIONE

DISIT
DISTRIBUTED SYSTEMS
AND INTERNET
TECHNOLOGIES LAB
<http://www.disit.org>



Horizon 2020
European Union Funding
for Research & Innovation



Risk Assessment

Decision Support Systems

Service Details:

NAME: villa maria teresa hospital...
 ADDRESS: VIA DELLA CERNAIA, FIRENZE, FIRENZE
 SERVICE TYPE: http://www.disit.org/km4city/schema/Public_hospital
 SERVICE CLASS: http://www.disit.org/km4city/schema/Health_Care
 SERVICE: <http://www.disit.org/km4city/healthsource/7ab1bc45864357b727d857b6081d2db>
 VALUE: 100
 WKT DESCRIPTION: POINT (11.2561 43.7668)

From	Date	km/h	car/km	car/h
VIA DELLA MATTONAIA	2016-10-10 18:01:08	58	15	2435
LANGARNO AMERIGO VESPUCCI	2016-10-10 18:01:08	18	85	1842
VIA CARLO CAVOUR	2016-10-10 18:01:08	81	12	2009
VIA VALFORCA	2016-10-10 18:01:08	27	53	2307
VIA VITTORIO ALFIERI	2016-10-10 18:01:08	23	58	2798
VIA SENESE	2016-10-10 18:01:08	27	54	3214
VIA GUELFA	2016-10-10 18:01:08	88	3	426
VIA DELLA SCALA	2016-10-10 18:01:08	80	13	2157
PIAZZA DI SAN FELICE	2016-10-10 18:01:08	62	10	1887
BORGIO SAN FREDIANO	2016-10-10 18:01:08	57	17	2000
VIA VITTORIO ALFIERI	2016-10-10 18:01:08	10	76	195
VIA DEL CAMPOLUCCO	2016-10-10 18:01:08	80	13	2157
VIA DEI BENCI	2016-10-10 18:01:08	22	59	2679
PIAZZALE DI PORTA ROMANA	2016-10-10 18:01:08	54	8	1381

Model: Open Restaurant

- Process: viale spartaco lavagnini
- Process: via san gallo
- Process: via santa maria 3

Model: Change position of a bus stop

- Process: line 14 in viale morgagni 10

Model: Move a Bus Stop Location

- Model: TestGP
- Process: Istanza Test GP2
- Model: TestGP_cloned
- Process: Istanza Test GP2_cloned
- Model: G (- C8)
- Process: Move Bus Stop
- Process: Move Bus Stop
- Model: G (- C8)_cloned
- Model: Open Restaurant_cloned
- Model: Open Restaurant_cloned

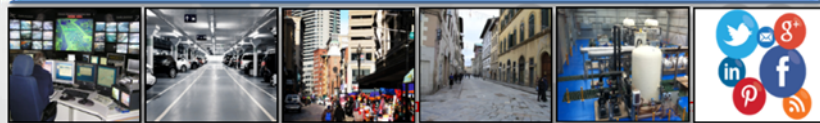
Flowchart Details:

- Open Restaurant (viale spartaco lavagnini)
 - Other restaurant near
 - Restaurant within 500m
 - Restaurant from 500m to 100m
 - Parking
 - Parking dimension
 - Parking type
 - Free
 - Paid
 - Persons flow
 - TPL flow
 - traffic flow
 - Day
 - Night
 - Cinema
 - Theatre
 - Leisure activity

Assessing Risk

- hydraulic
- Seismic

Data and Service Aggregator



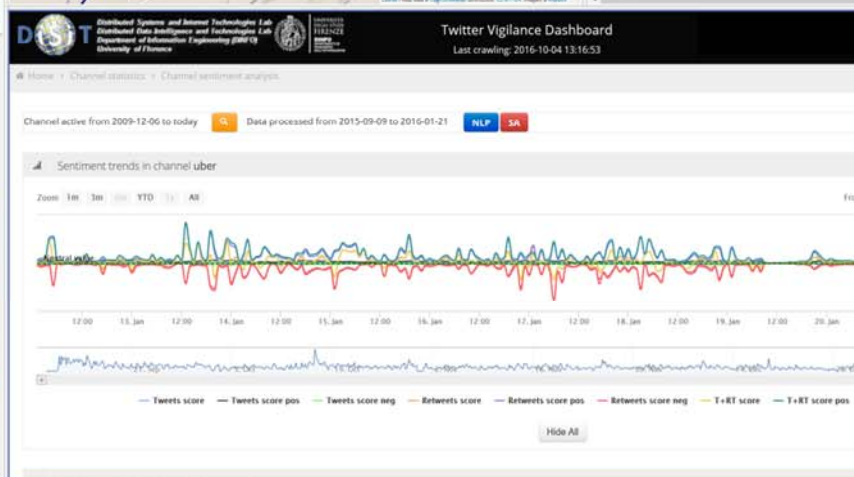
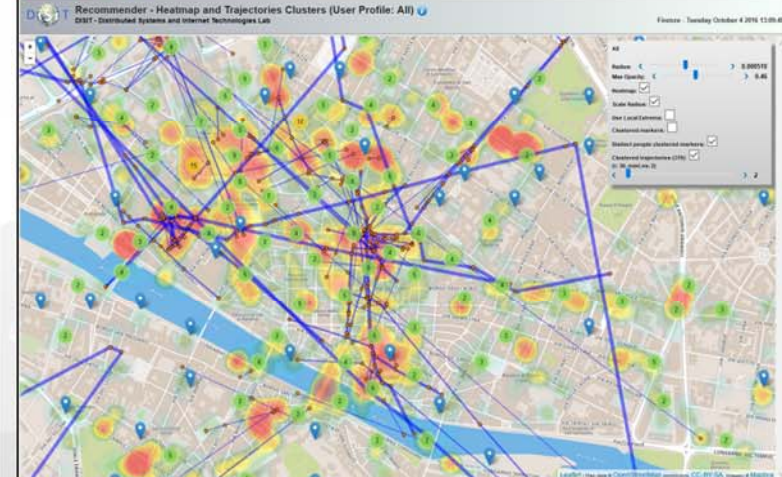
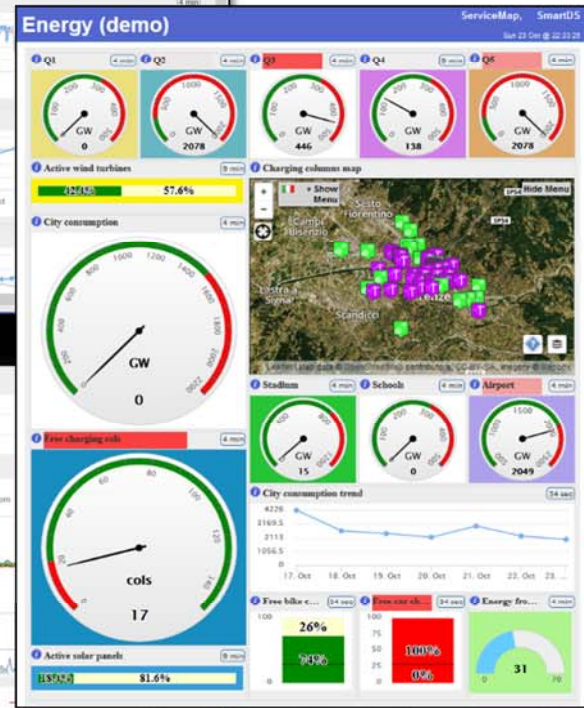
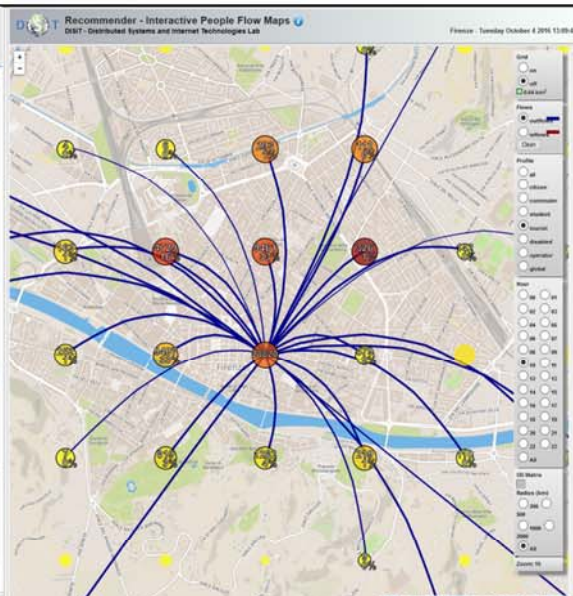
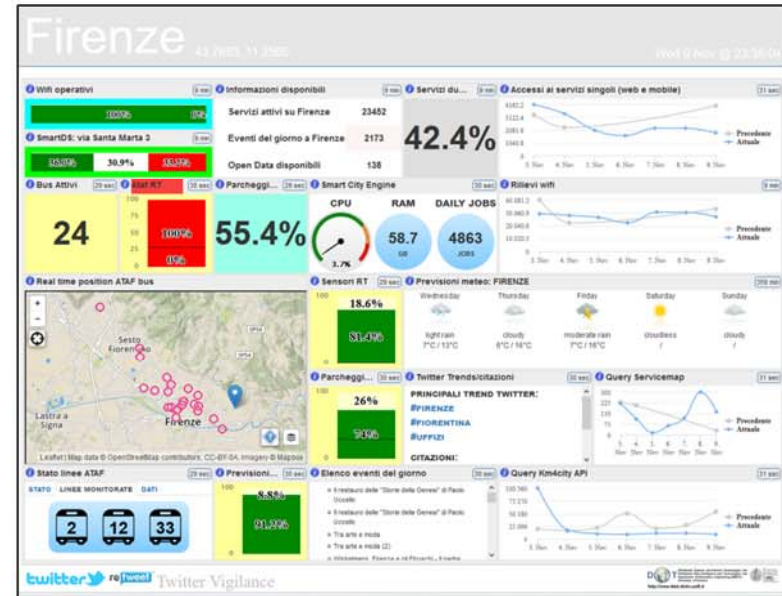
Creating and activating

- Decision Support models

Smart City Dashboard



Horizon 2020
European Union Funding
for Research & Innovation



Servizi agli Utenti

Firenze

Tue 13 Dec @ 17:01:29

Tweet per Firenze

TRENDS QUOTES

- #FIORENTINA
- #UFFIZI
- #PONTEVECCHIO
- #BARCELLO

Twitter quotes

TRENDS QUOTES

- @ACFFIORENTINA
- @MUSEONOVECENTO
- @UNI_FIRENZE
- @COMUNEFI
- @NAZIONE_FIRENZE
- @FIRENZE111WEB

Eventi a Firenze

WIKRELMANN, FIRENZE E DEI ETROSCI - IL PADRE DELL'ARCHEOLOGIA IN TOSCANA

2016-05-26 to 2017-01-30

PIAZZA DELLA SANTISSIMA ANNUNZIATA

SPLENDIDA MINIMA. PICCOLE SCULTURE PREZIOSE NELLE COLLEZIONI MEDICEE: ...

2016-06-21 to 2017-01-08

PIAZZA DEI PITTI 1

SCULTURA E CULTO A POGGIO COLLA: UN SANTUARIO ETRUSCO NEL MUGELLO

2016-08-27 to 2016-12-31

VIA CAMILLO CAVOUR

AD USUM FRATRIS - MINIATURE NEI MANOSCRITTI LAURENZIANI DI SANTA CROCE...

2016-09-05 to 2017-01-07

PIAZZA DI SAN LORENZO 9

TEMPO REALE E TEMPO DELLA REALTÀ. GLI OROLOGI DI PALAZZO PITTI DAL XVI...

2016-09-13 to 2017-01-08

PROTEZIONE CIVILE

GENERAL METEO

- RISCHIO IDRAULICO
- RISCHIO TEMPORALI
- RISCHIO IDROGEOLOGICO
- RISCHIO NEVE
- RISCHIO GHIACCIO
- RISCHIO VENTO
- RISCHIO MAREGGIATE

Stato servizio BUS

STATO LINEE MONITORATE DATI

- 46% IN ORARIO
- 5% IN ANTICIPO
- 49% IN RITARDO

Meteo Firenze

Tuesday: cloudless 6°C / 15°C

Wednesday: overcast 4°C / 12°C

Thursday: overcast 5°C / 15°C

Friday: bit cloudy /

Saturday: cloudless /

Parcheggi

65%

Parcheggi liberi

Line graph showing free parking spots over time (13 Dec to 14 Dec).

Utenti FirenzeWiFi negli ultimi 5 minuti

Line graph showing WiFi users over time (13 Dec to 14 Dec).



Firenze

43 7003, 11.2000

42.4%

24

55.4%

58.7

4863

3.7%

18.6%

33.0%

36%

970%

Twitter Trends: FIRENZE

PRINCIPALI TREND TWITTER: #FIRENZE, #FIORENTINA, #PONTEVECCHIO

STATO LINEE ATAF

LINEE MONITORATE

2, 12, 33

Twitter Vigilance

SmartCity Processes

Fri 4 Nov @ 18:51:20

ATAF	ATAF	ATAF	ATAF	CHECK RT	EVENTI FI
avm_linea7_j	avm_linea7_j	avm_linea7_j	avm_linea7_j	check_rt	Eventi_Firenze_j
RUNNING	RUNNING	SUCCESS	SUCCESS	SUCCESS	SUCCESS
2016-11-04 18:42:31	2016-11-04 18:42:31	2016-11-04 18:42:31	2016-11-04 18:42:31	2016-11-04 18:42:31	2016-11-04 18:42:31
PARK	PARK	PARK	PARK	PARK	PARK
parcaggi7_j	parcaggi7_j	parcaggi10_j	parcaggi11_j	parcaggi12_j	parcaggi13_j
FAILED	SUCCESS	SUCCESS	SUCCESS	SUCCESS	SUCCESS
2016-11-04 18:42:31	2016-11-04 18:42:31	2016-11-04 18:42:31	2016-11-04 18:42:31	2016-11-04 18:42:31	2016-11-04 18:42:31
METEO	METEO	METEO	METEO	METEO	METEO
revi_meteo_Abbatone_smi	revi_meteo_Arezzo_smi	revi_meteo_Fasole_smi	revi_meteo_Firenze_smi	revi_meteo_Impruneta_smi	revi_meteo_Lucca_smi
SUCCESS	SUCCESS	SUCCESS	SUCCESS	SUCCESS	SUCCESS
2016-11-04 18:42:31	2016-11-04 18:42:31	2016-11-04 18:42:31	2016-11-04 18:42:31	2016-11-04 18:42:31	2016-11-04 18:42:31
SENSORI	SENSORI	SENSORI	SENSORI	SENSORI	SENSORI
sensori_dinamicometro	sensori_AREZZO_j	sensori_EMPOLI_j	sensori_PISA_j	sensori_FIRENZE_j	sensori_PRATO_j
SUCCESS	SUCCESS	SUCCESS	SUCCESS	SUCCESS	SUCCESS
2016-11-04 18:42:31	2016-11-04 18:42:31	2016-11-04 18:42:31	2016-11-04 18:42:31	2016-11-04 18:42:31	2016-11-04 18:42:31
TWITTER	TWITTER	PI WIFI	PI WIFI	PI WIFI	PI WIFI
lastTwitterDocuments	TwitterVigilance	calcolataPiTimeSeries	calcolataPiLevelData	calcolataPiStatus	Graphs3Generator
SUCCESS	RUNNING	RUNNING	SUCCESS	SUCCESS	FAILED
2016-11-04 18:42:31	2016-11-04 17:00:00	2016-11-04 18:42:31	2016-11-04 18:42:31	2016-11-04 18:42:31	2016-11-04 18:42:31

Twitter Vigilance

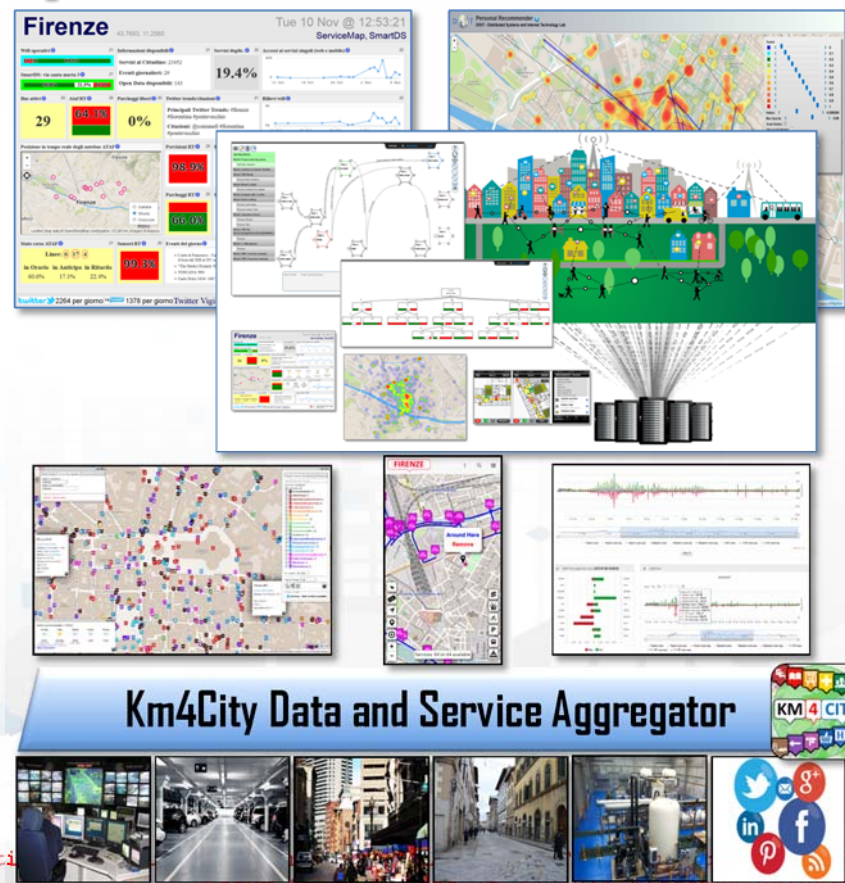




From Data to Services for the Sentient Cities

Open Source and inter-operable tools to

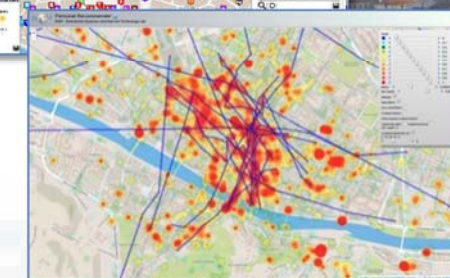
- keep city under control
- improve city resilience, reducing risks and decision support
- implementing city strategies
- exploiting data for the city, implementing:
 1. Business intelligence and
 2. data aggregation as *semantic interoperability layer*





Sentient Urban Platform for Smart City

- Set up an ICT based Urban Platform integrated and unified data management among services, city operators and city users:
 - **Control Room, Real Time Monitoring,**
 - Decision support, assessing and monitoring risk and resilience
 - **Data analytics and business intelligence:**
 - predictions, reasoning, city users behavior analysis,
 - **Reading the city: data, users, etc.**
 - IOT, Open data sensors, private data, static and real time data.
 - **City Strategies: Stimulate virtuous behavior of City Users**
 - participation, totem, twitter, Apps, etc.
 - **Transform Data into value**
 - Put in action smart city innovative solutions and services, development tools





UNIVERSITÀ
DEGLI STUDI
FIRENZE

DINFO
DIPARTIMENTO DI
INGEGNERIA
DELL'INFORMAZIONE

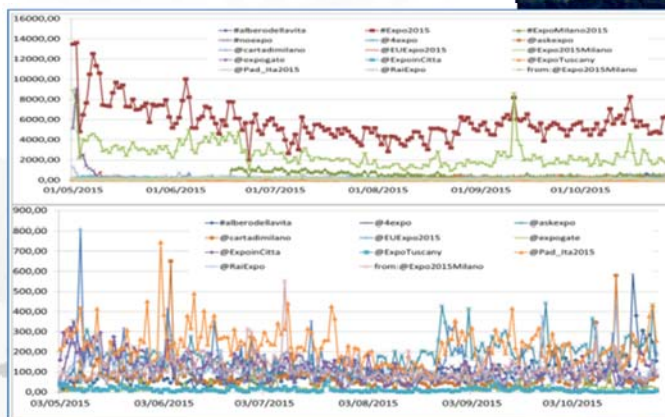
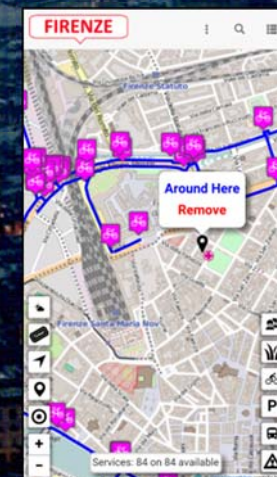
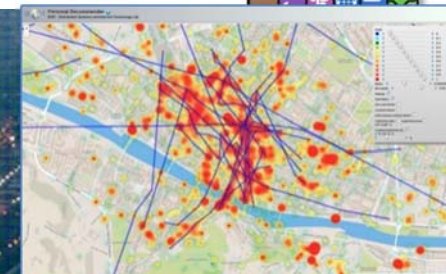
DISIT
DISTRIBUTED SYSTEMS
AND INTERNET
TECHNOLOGIES LAB

<http://www.disit.org>

city under control



- **monitoring services' status of city operators**
 - Smart City Dashboards
 - Continuous Business Intelligence
- **City users behaviour monitoring and analysis/influencing/engaging:**
 - Sensors, traffic flow, people flows, mobiles, sensors, IOT, IOE
 - Wi-Fi, Tv-Cameras
- **City users participation**
 - social media for city services and events, Twitter Vigilance
 - Collecting contributions: images, stars, comments



The language of innovation II Forum TJU Shanghai
Forum Smart



UNIVERSITÀ
DEGLI STUDI
FIRENZE

DINFO
DIPARTIMENTO DI
INGEGNERIA
DELL'INFORMAZIONE

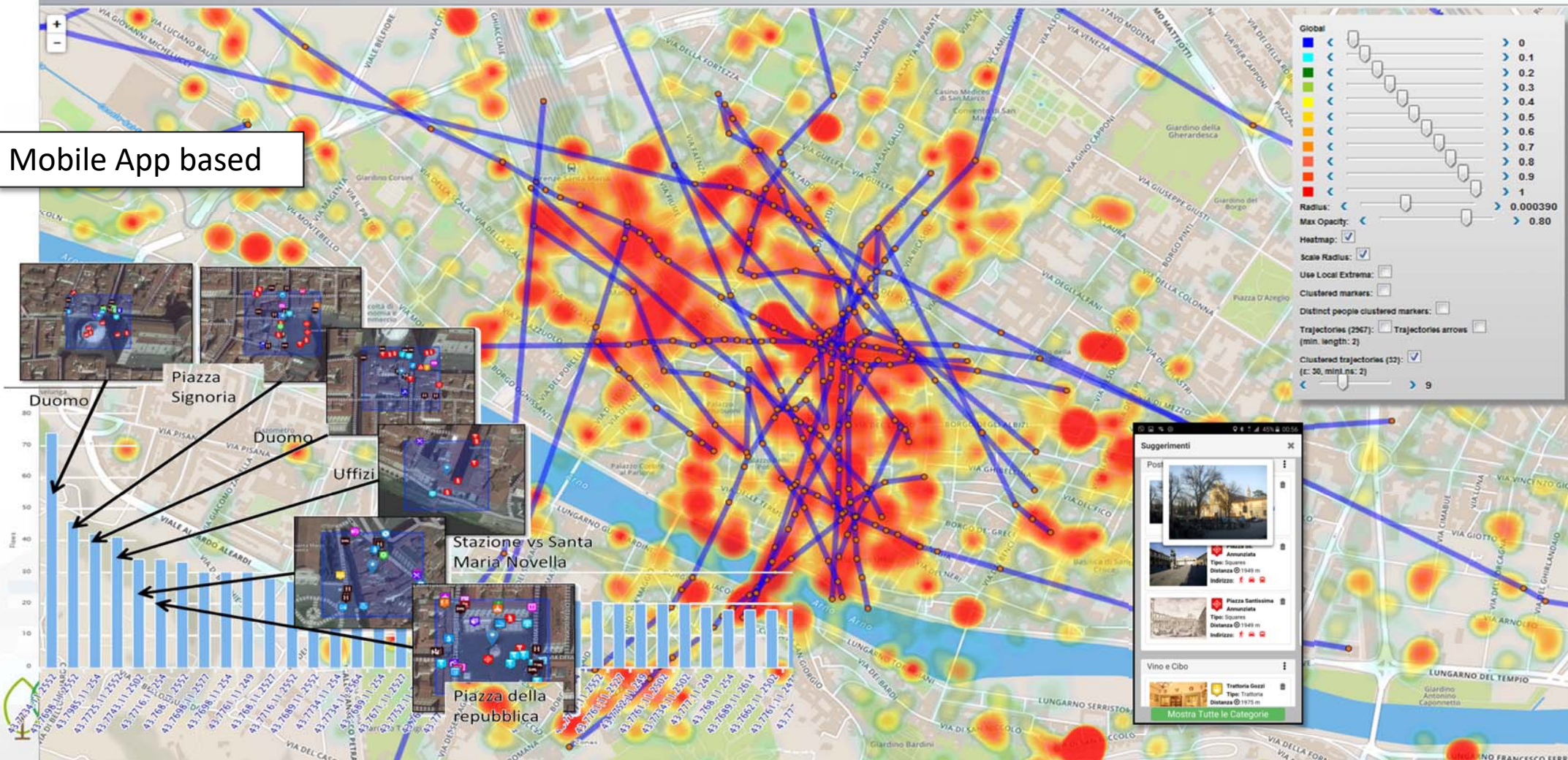
DISIT
DISTRIBUTED SYSTEMS
AND INTERNET
TECHNOLOGIES LAB
<http://www.disit.org>

User Behavior Analyzer



DISIT Personal Recommender
DISIT - Distributed Systems and Internet Technology Lab

Mobile App based





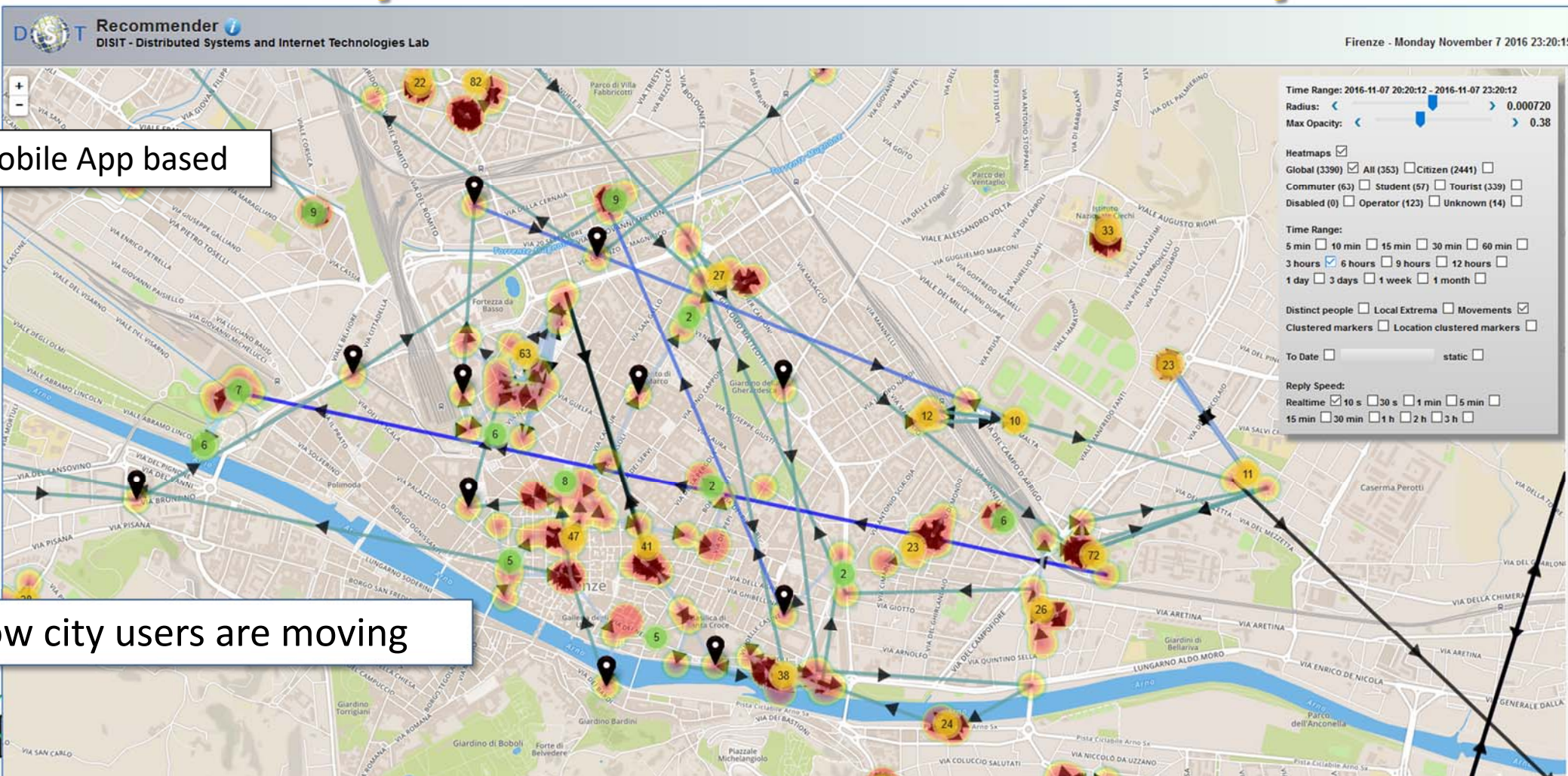
UNIVERSITÀ
DEGLI STUDI
FIRENZE

DINFO
DIPARTIMENTO DI
INGEGNERIA
DELL'INFORMAZIONE

DISIT
DISTRIBUTED SYSTEMS
AND INTERNET
TECHNOLOGIES LAB
<http://www.disit.org>



Anonymous User Behaviour Analysis



Mobile App based

How city users are moving



UNIVERSITÀ
DEGLI STUDI
FIRENZE

DINFO
DIPARTIMENTO DI
INGEGNERIA
DELL'INFORMAZIONE

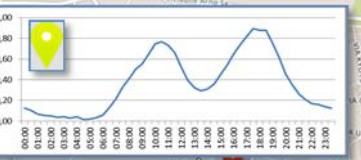
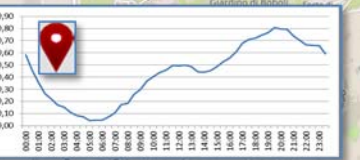
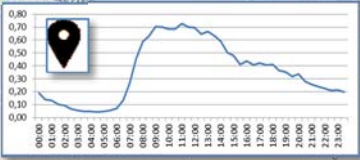
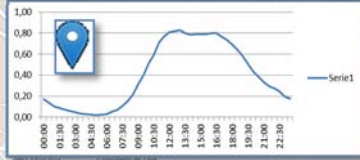
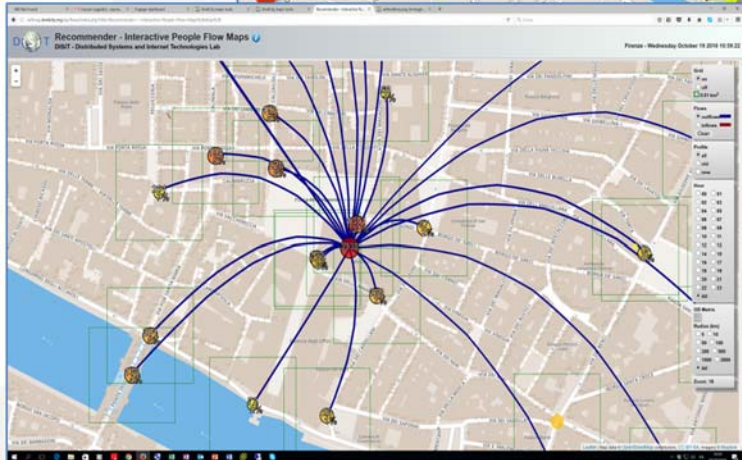
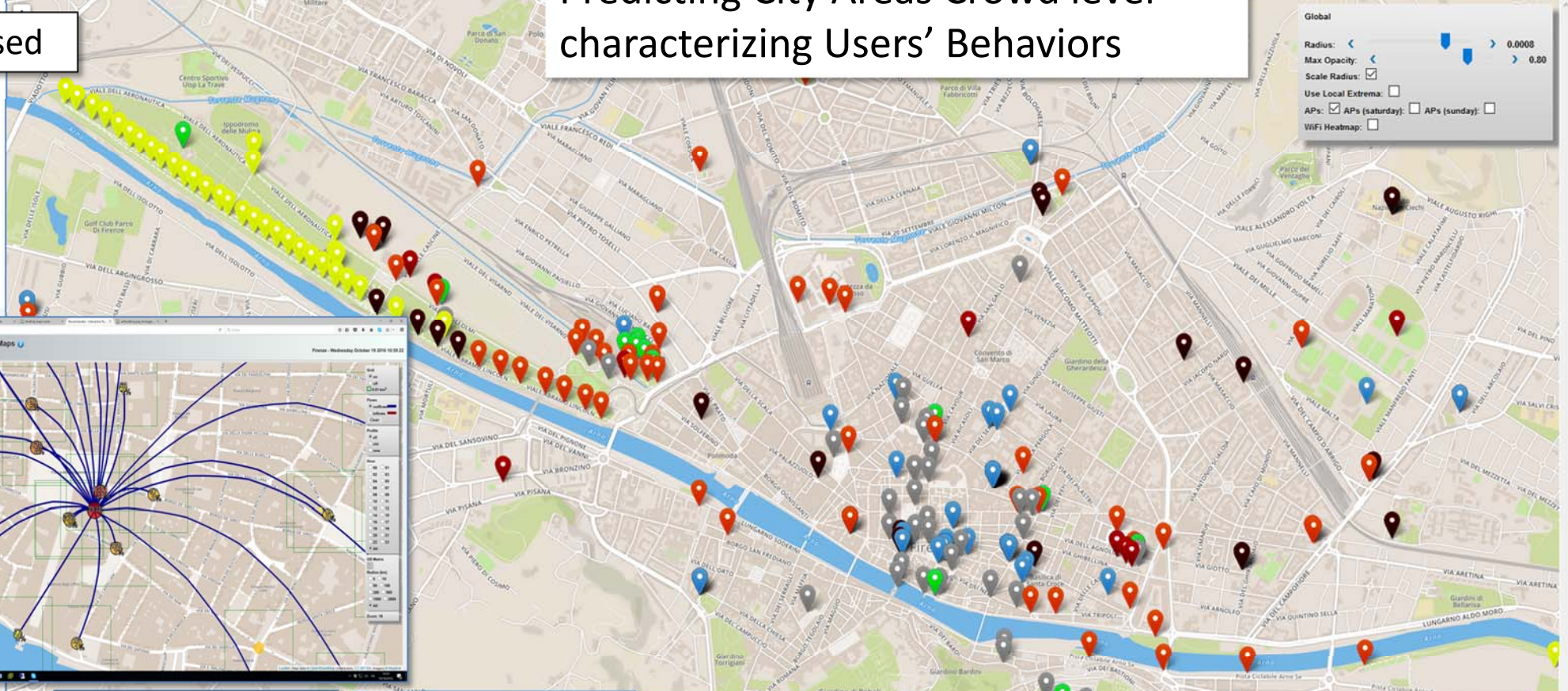
DISIT
DISTRIBUTED SYSTEMS
AND INTERNET
TECHNOLOGIES LAB
<http://www.disit.org>

Characterizing City Areas

Wi-Fi based

Predicting City Areas Crowd level
characterizing Users' Behaviors

Firenze Wi-Fi: Access Points Clusters Coverage Map
 DISIT - Distributed Systems and Internet Technologies Lab
 Firenze - Saturday November 12 2016 19:16:33





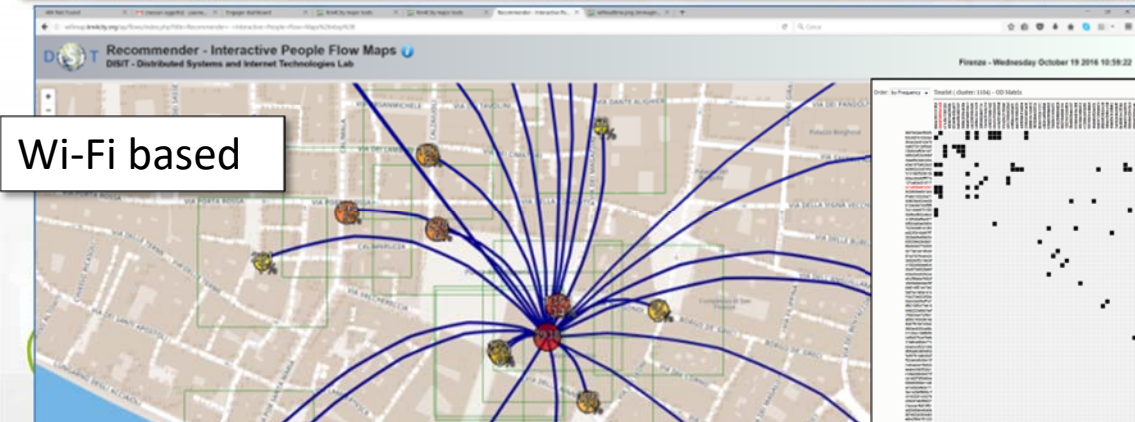
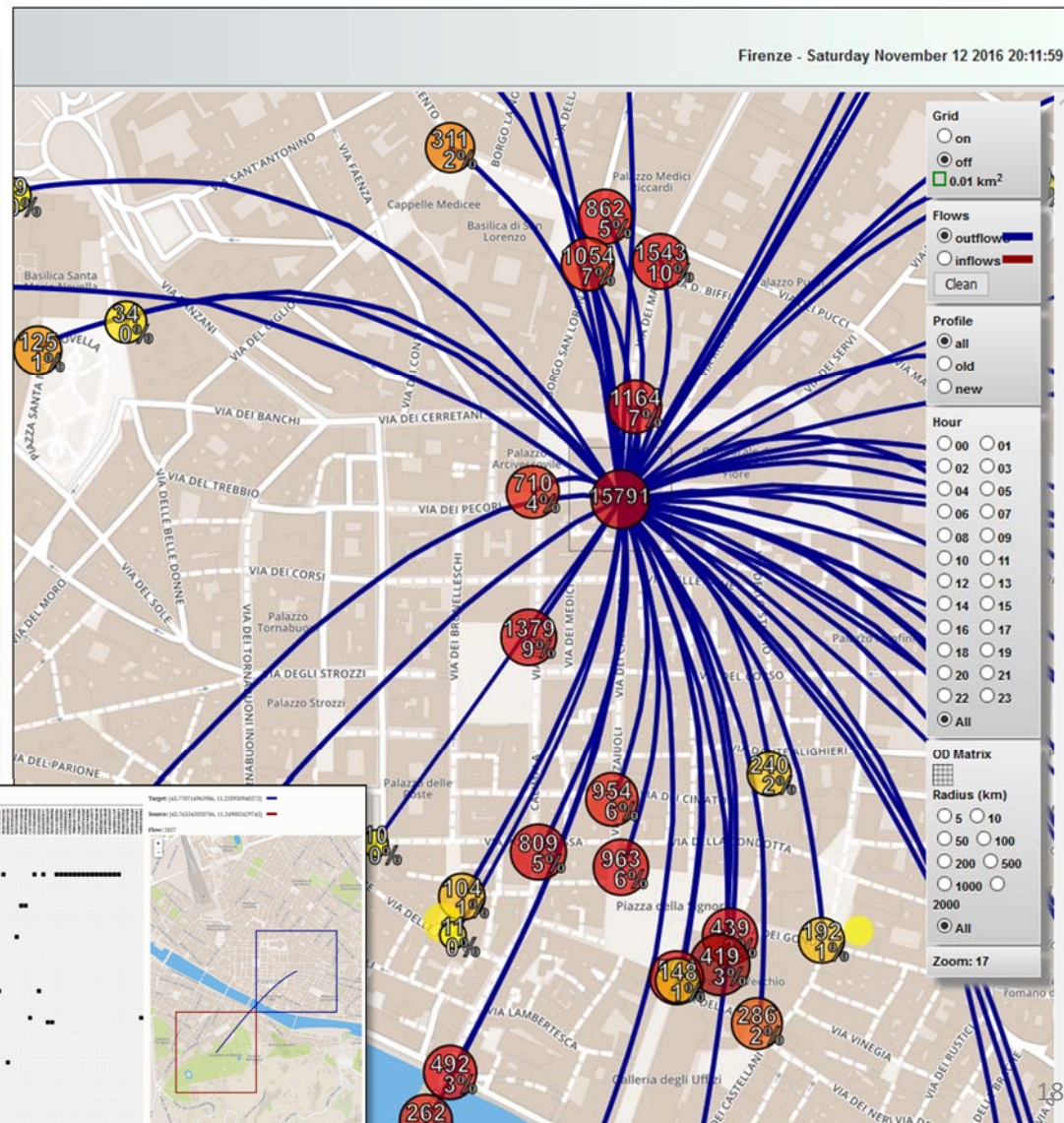
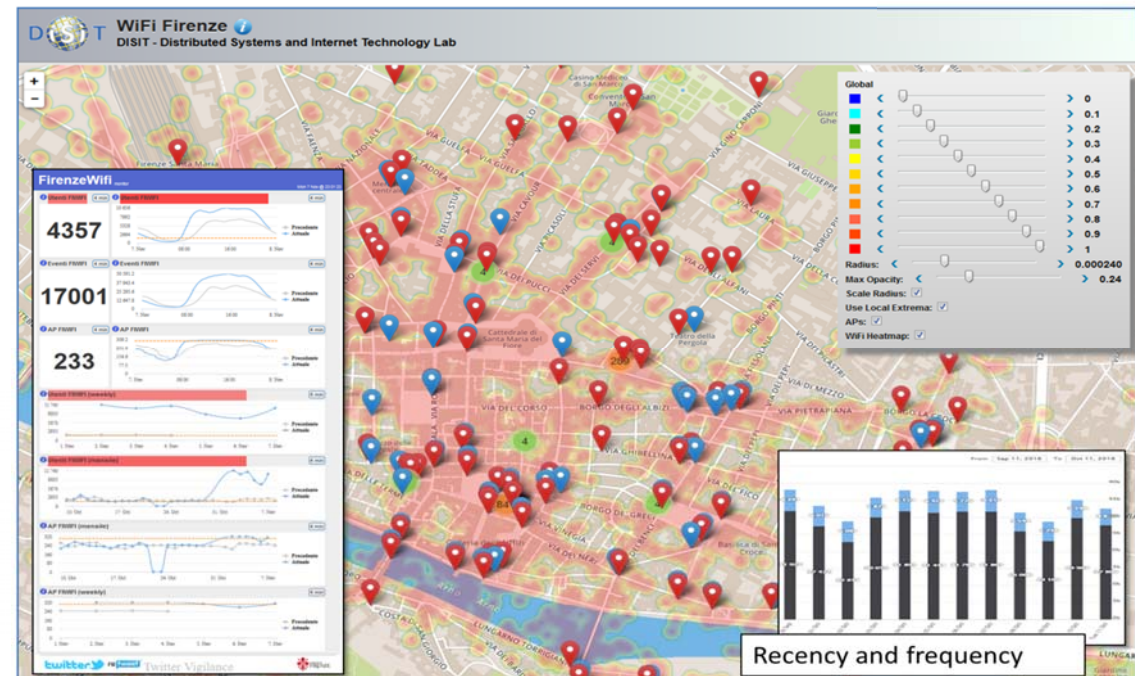
UNIVERSITÀ
DEGLI STUDI
FIRENZE

DINFO
DIPARTIMENTO DI
INGEGNERIA
DELL'INFORMAZIONE

DISIT
DISTRIBUTED SYSTEMS
AND INTERNET
TECHNOLOGIES LAB

<http://www.disit.org>

Origin Destination Estimation





UNIVERSITÀ
DEGLI STUDI
FIRENZE

DINFO
DIPARTIMENTO DI
INGEGNERIA
DELL'INFORMAZIONE

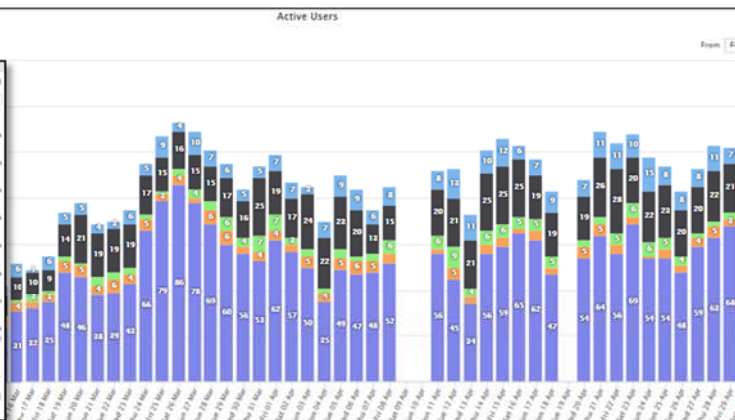
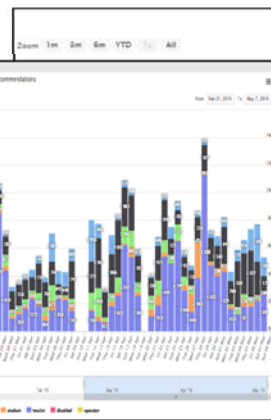
DISIT
DISTRIBUTED SYSTEMS
AND INTERNET
TECHNOLOGIES LAB
<http://www.disit.org>

User Behavior Analysis

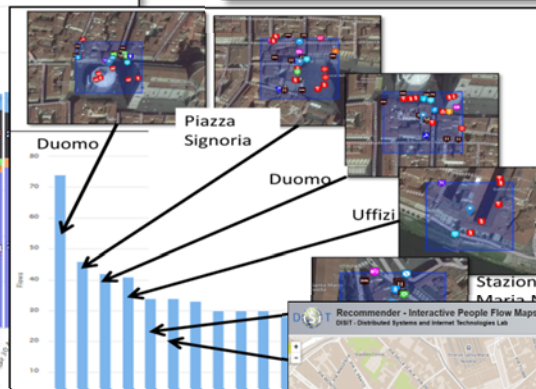


Integrated Analysis

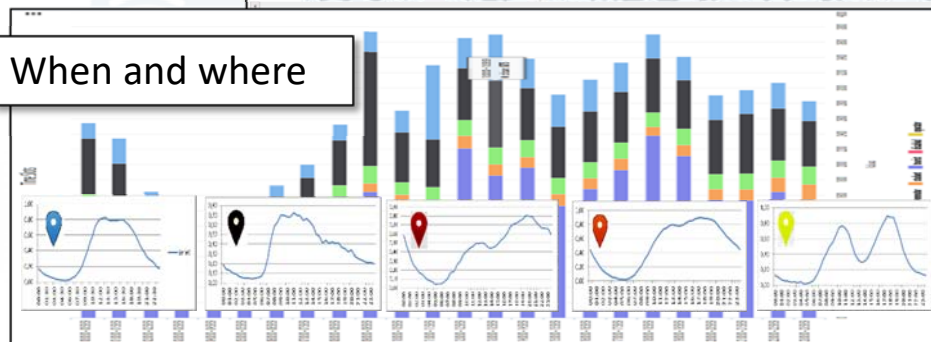
Who



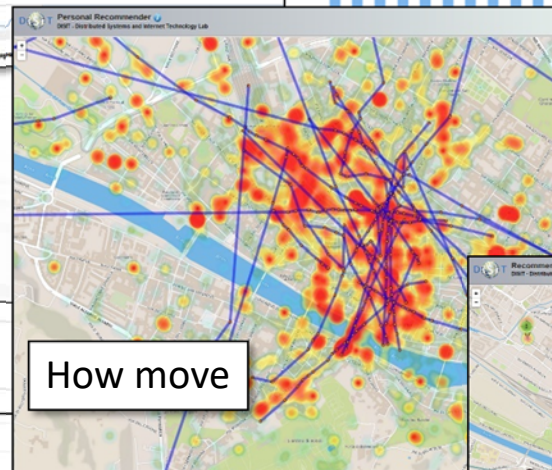
Where?
Why?



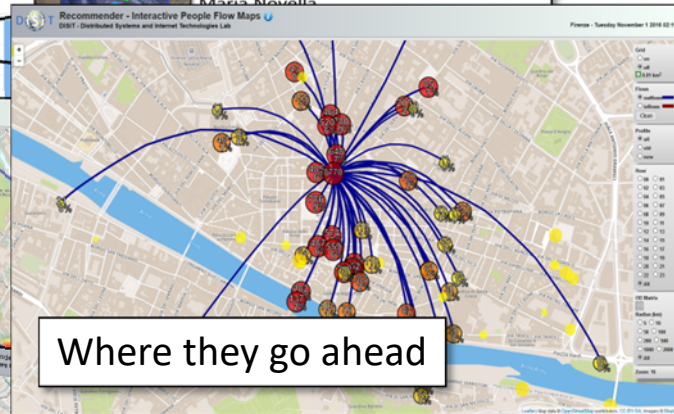
When and where



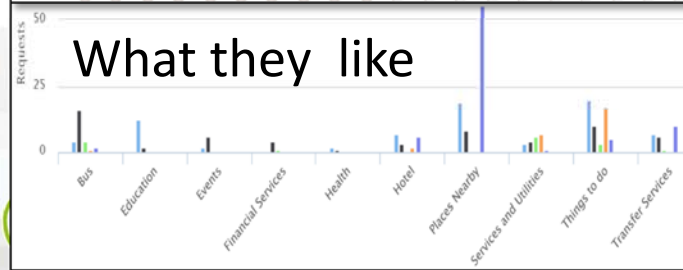
How move



Where they go ahead



What they like



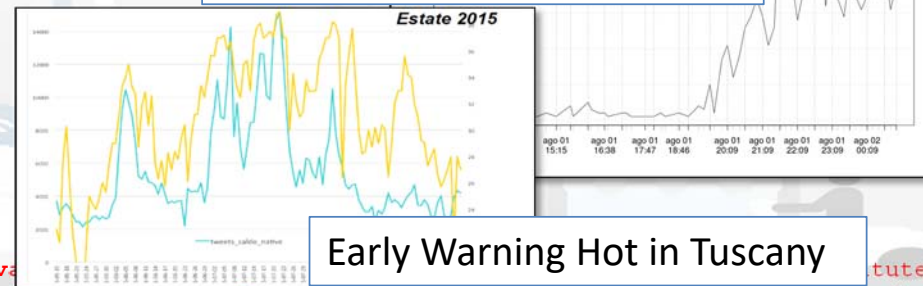
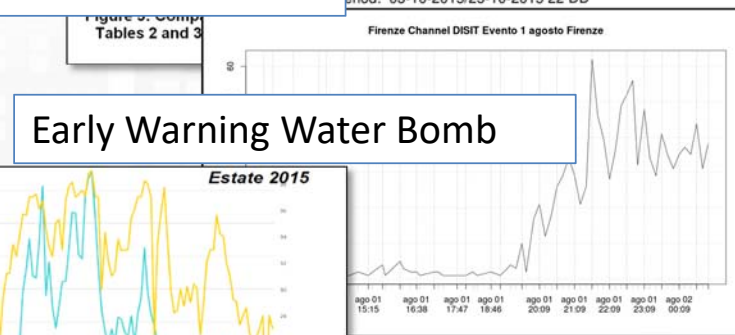
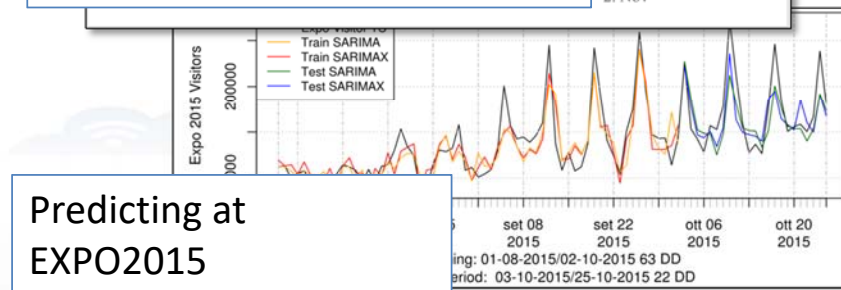
How much they stay





Predicting Models for Admin. & City Users

- As we have ...Weather Forecast (LAMMA)
- Prediction for improving quality of life and services
 - distributing workload, providing sugg.
 - early warning
- Traffic Flows & People Flows
 - crowd , #number of people
- Parking Status → free slots
- Waste management → drop
- Status of recharge stations → book





Sentient Urban Platform for Smart City

- Set up an ICT based Urban Platform integrated and unified data management among services, city operators and city users:

- **Control Room, Real Time Monitoring,**

- Decision support, assessing and monitoring risk and resilience

- **Data analytics and business intelligence:**

- predictions, reasoning, city users behavior analysis,

- **Reading the city: data, users behavior and needs, etc.**

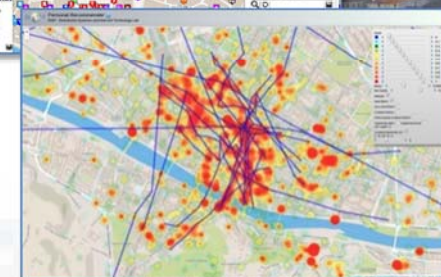
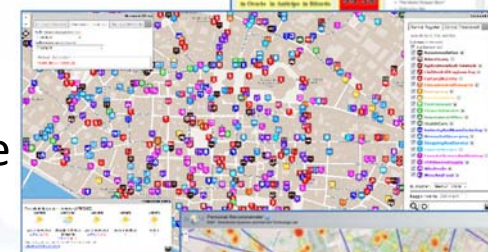
- IOT, Open data sensors, private data, static and real time data.

- **City Strategies: stimulate virtuous behavior of City Users**

- participation, totem, twitter, Apps, etc.

- **Transform Data into value**

- Put in action smart city innovative solutions and services, development tools



Tuscany Region

Road Graph (Tuscany region)

132,923 Roads
389,711 Road Elements
318,160 Road Nodes
1,508,207 Street Numbers

Services (20 cat, 512 cat.)
16 Pub. Transport Operators
21.280 Bus stops & 1081 bus lines
210 Parking areas
796 Traffic Sensors
Info on: points, paths, areas, etc.

Dynamic/real-time

- bus lines: 144 updates X day X line
- parking status: 76 updates X day X sensor
- traffic Sensors: 288 updates X day X sensor
- weather: 2 updates X day for 285 areas
- events: about 60 new events X day
- Wi-Fi: > 350.000 measures X day
- mobiles: > 50.000 measures X day
- more than 35.000 distinct users X day
- From 600.000 to 4.5 M Tweets X day
-many IOT



<http://servicemap.km4city.org>

- Nascondi Menu

Servizi Regolari | Servizi Trasversali

search text into service

Categorie Servizi

- De/Select All
- Accommodation +
- Advertising +
- AgricultureAndLivestock +
- CivilAndEdilEngineering +
- CulturalActivity +
- EducationAndResearch +
- Emergency +
- Entertainment +
- Environment +
- FinancialService +
- GovernmentOffice +
- HealthCare +
- IndustryAndManufacturing +
- MiningAndQuarrying +
- ShoppingAndService +
- TourismService +
- TransferServiceAndRenting +
- UtilitiesAndSupply +
- Wholesale +
- WineAndFood +

N. risultati: Nessun Limite

Raggio ricerca 100 metri

Risultati della ricerca

più di 4000 risultati, attivato clustering

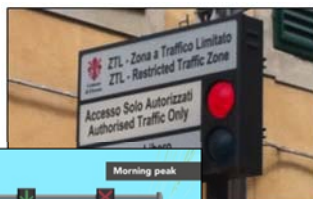
Services 16858



Internet of Things: Sensors and Actuators

- **Restricted Traffic Zone Gates**

- Passages, payment, alerts, Wi-Fi control, RFI control, etc.



- **Road Direction manager:**

- panel, red-light, etc.
- Status and action



- **Environmental Sensors:**

- Air quality, pollution, rain, allergens, snow, ...
- humidity, temperature, ...
- water level in rivers
- Status of underpass and bridges
- Seismic sensors



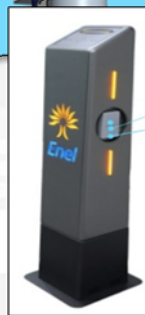
- **Public Light Pillars**

- Traffic flows, people flow,
- Wi-Fi, Tv-Camera, BT servers, on/off, percentage of light, ..



- **Waste Manager**

- Level, kind, status, on/off



- **Recharge station, column**

- Free slots, consumption, next time slot, ...



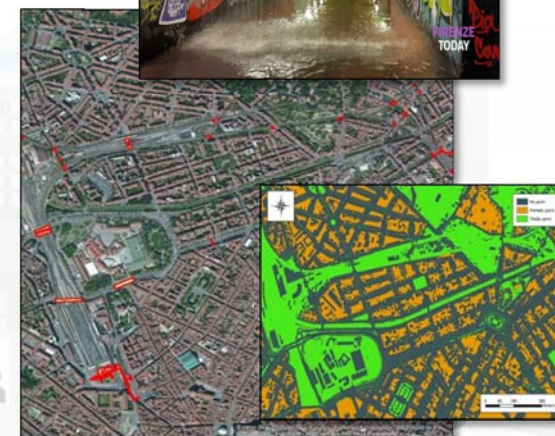
- **Risk maps data**

- Value of the buildings,
- hydrogeological risk map,
- earthquake risk map, ...
- people distribution and location
- Position of recover places,



- **Traffic Zone Gates**

- Passages, alerts,
- Wi-Fi control,
- RFID control,
- etc.





UNIVERSITÀ
DEGLI STUDI
FIRENZE

DINFO
DIPARTIMENTO DI
INGEGNERIA
DELL'INFORMAZIONE

DISIT
DISTRIBUTED SYSTEMS
AND INTERNET
TECHNOLOGIES LAB
<http://www.disit.org>

Traffic Flow Tools



- Spire and Virtual Spires (cameras), Bluetooth, ..
- Specifically located: along, around, ..

The collage illustrates the application of traffic flow tools in different contexts. It features a map of Tuscany with red circular markers indicating specific locations. A 3D visualization shows a city with blue vertical spires representing data points or sensors. A detailed map of Pisa shows red circular markers and a 'Pisa' label. The interfaces include a search bar for 'Regular Services' and 'Transversal Services', a list of service categories, and a detailed view of a 'METROBUS' service with various attributes like 'Name', 'Type', 'Address', and 'Coordinates'.



UNIVERSITÀ
DEGLI STUDI
FIRENZE

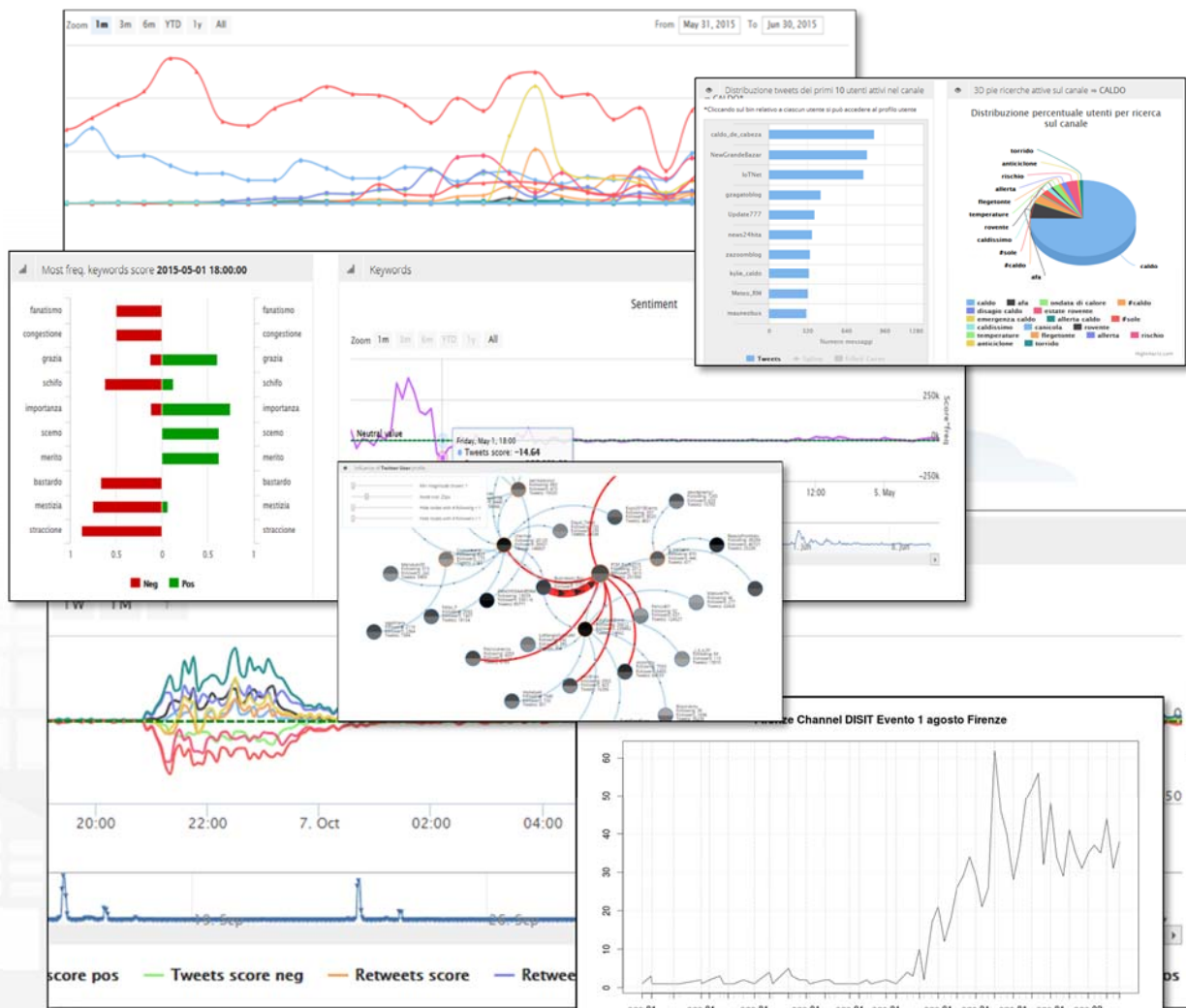
DINFO
DIPARTIMENTO DI
INGEGNERIA
DELL'INFORMAZIONE

DISIT
DISTRIBUTED SYSTEMS
AND INTERNET
TECHNOLOGIES LAB

<http://www.disit.org>

Twitter Vigilance

- <http://www.disit.org/tv>
- <http://www.disit.org/rttv>
- Citizens as sensors to
 - Assess sentiment on services, events, ...
 - Response of consumers wrt...
 - Early detection of critical conditions
 - Information channel
 - Opinion leaders
 - Communities
 - Formation
 - Predicting volume of visitors for tuning the services

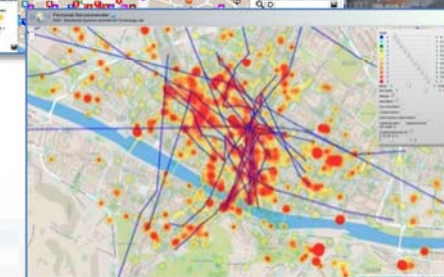
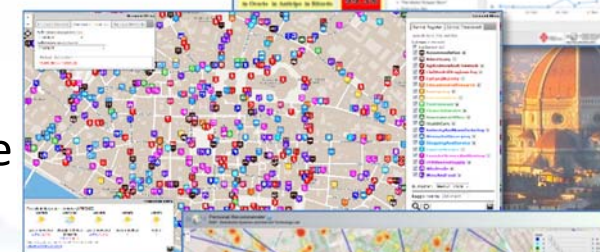


Twitter Vigilance



Sentient Urban Platform for Smart City

- Set up an ICT based Urban Platform integrated and unified data management among services, city operators and city users:
 - **Control Room, Real Time Monitoring,**
 - Decision support, assessing and monitoring risk and resilience
 - **Data analytics and business intelligence:**
 - predictions, reasoning, city users behavior analysis,
 - **Reading the city: data, users behavior and needs, etc.**
 - IOT, Open data sensors, private data, static and real time data.
 - **City Strategies: stimulate virtuous behavior of City Users**
 - participation, totem, twitter, Apps, etc.
 - **Transform Data into value**
 - Put in action smart city innovative solutions and services, development tools





UNIVERSITÀ
DEGLI STUDI
FIRENZE

DINFO
DIPARTIMENTO DI
INGEGNERIA
DELL'INFORMAZIONE

DISIT
DISTRIBUTED SYSTEMS
AND INTERNET
TECHNOLOGIES LAB
<http://www.disit.org>

Km4CityMobile App



What do you want to do?

Discover the City | Points Of Interest | Search

Public transport | Bus Ticket | Car Park

Events | Suggestions Near You | We Recommend

Weather | Assistant | Navigator

Favourites | Chronology | Latest Reviews

Alert Civil Prot. | Settings | Vote APP!

Information | About Us

KM4CITY

FIRENZE

Choose Services

- Accommodation
- Advertising
- Agriculture And Livestock
- Civil And Edil Engineering
- Cultural Activity
- Education And Research
- Emergency
- Entertainment
- Environment
- Financial Service
- Government Office
- Health Care
- Industry And Manufacturing
- Mining And Quarrying
- Shopping And Service
- Tourism Service
- Transfer Service And Renting

KM4CITY

4:29 PM

ponte vecchio

Torre Dei Mannelli

ponte vecchio

Vecchio

Vecchio

Vecchio

Vecchio

Vecchio

KM4CITY

web application

<http://www.km4city.org>

Choose

- Accommodation
- Cultural Activity
- Education
- Emergency
- Entertainment
- Environment & Ag
- Financial Service
- ATM
- Bank
- Financial Institut

Suggerimenti

Post

ESERCITAZIONE MUGNONE 2016

REGIONE TOSCANA

prevede: Firenze (FI) (ZONA: A3)

RISCHIO	TEMPI	ALLERTA
IDROGEOLOGICO IDRAULICO RETICOLO MINORE	Dalle ore 13.00 di Venerdì 27 maggio 2016 alle ore 18.00 di Venerdì 27 maggio 2016	GIALLO
IDROGEOLOGICO IDRAULICO RETICOLO MINORE	Dalle ore 18.00 di Venerdì 27 maggio 2016 alle ore 12.00 di	ARANCIONE

Piazza Santissima Annunziata

Tipo: Squares

Distanza: 1949 m

Indirizzo:

Trattoria Gozzi

Tipo: Trattoria

Distanza: 1975 m

Mostra Tutte le Categorie

Tutta la posta in un unico posto

CALENDARIO | POSTA

Sereno 3° 11° 0°

MICROSOFT EDGE | ROMA

NETFLIX

XBOX

ANTEPRIMA SK... | TUNELN RADIO | TWITTER

SODA

DISPONIBILE SU

Google play

Scarica da

App Store

Scarica da

Windows Store

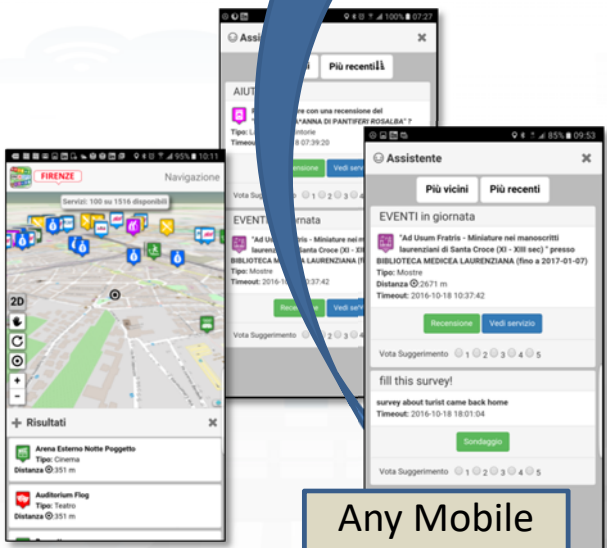
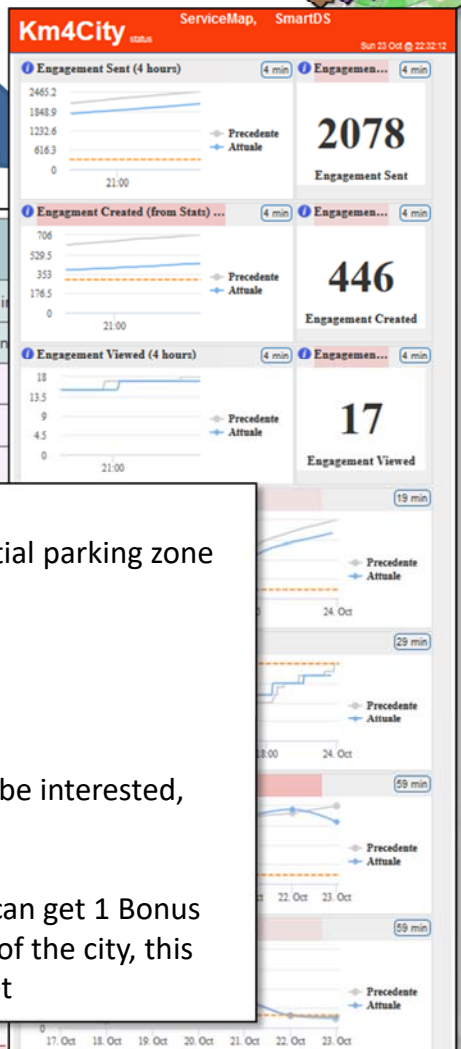


User influencing, engaging, monitoring & Follow Up

City & City Operators Strategy Editor



Rule name	Type	#sent	#viewed	#viewed on #sent	Description
daily_event_de	ENGAGEMENT	1 (0%)	0 (0%)	0%	Suggest (in german) an event currently on in
daily_event_en	ENGAGEMENT	1720 (2.12%)	70 (7.1%)	4.07%	Suggest (in english) an event currently on in
- commuter		5 (0.29%)	0 (0%)	0 (0%)	
- student		14 (0.81%)	0 (0%)	0 (0%)	
- tourist		1462 (85%)	25 (35.71%)	25 (1.71%)	
- citizen		113 (6.57%)			
- operator		0 (0%)			
- disabled		0 (0%)			
- all		119 (6.92%)			
daily_event_es	ENGAGEMENT	6 (0.01%)			
daily_event_fr	ENGAGEMENT	6 (0.01%)			
daily_event_it	ENGAGEMENT	5459 (6.73%)			
parking_en	ASSISTANCE	141 (0.17%)			
parking_es	ASSISTANCE	3 (0%)			
parking_it	ASSISTANCE	187 (0.23%)			
shoot_a_photo_de	ENGAGEMENT	68 (0.08%)			



Any Mobile and Web App

- Inform**
You have parked out of your residential parking zone
The Road cleaning is this night
The waste in S.Andreas Road is full
- Engage**
Provide a comment, a score, etc..
- Stimulate / recommend**
Events in the city, services your may be interested, etc..
- Provide Bonus**
Since you have parked here you we can get 1 Bonus
We suggest you to leave the car out of the city, this bonus can be used to buy a bus ticket



Sentient Urban Platform for Smart City

- Set up an ICT based Urban Platform integrated and unified data management among services, city operators and city users:

- **Control Room, Real Time Monitoring,**

- Decision support, assessing and monitoring risk and resilience

- **Data analytics and business intelligence:**

- predictions, reasoning, city users behavior analysis,

- **Reading the city: data, users behavior and needs, etc.**

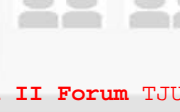
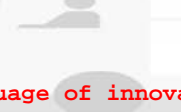
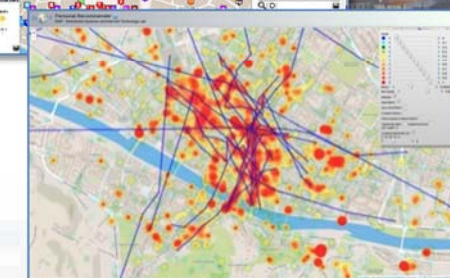
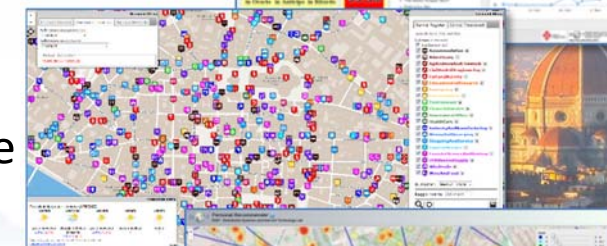
- IOT, Open data sensors, private data, static and real time data.

- **City Strategies: stimulate virtuous behavior of City Users**

- participation, totem, twitter, Apps, etc.

- **Transform Data into value**

- Put in action smart city innovative solutions and services, development tools



Transport systems
Mobility, parking



Public Services
Govern, events, ...



Sensors, IOT
Cameras, ..



Environment,
Water, energy



Shops, services,
operators



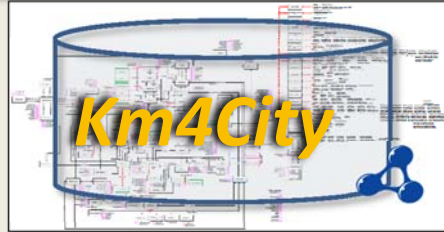
Social Media
WiFi, network



Static, Slow and Real Time data flows

Km4City Smart City Engine

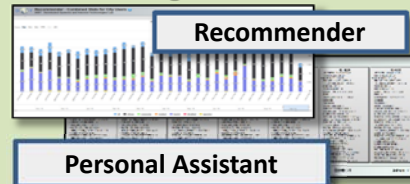
DISCES -- Distributed and parallel architecture on Cloud



Big Data Analytics



Smartening Tools



Development Tools



Km4City Smart City API

City Operators and Decision Makers

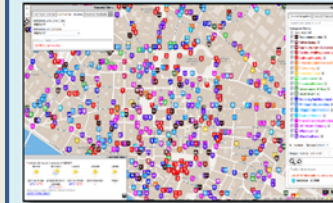
Dashboards



Smart Decision Support



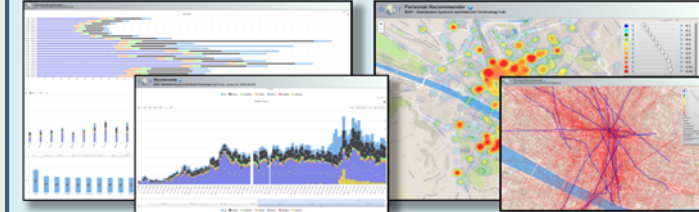
ServiceMap browser



Twitter Vigilance



Analyzers of City User Behavior



Tools for Final Users

Mobile e Web Apps



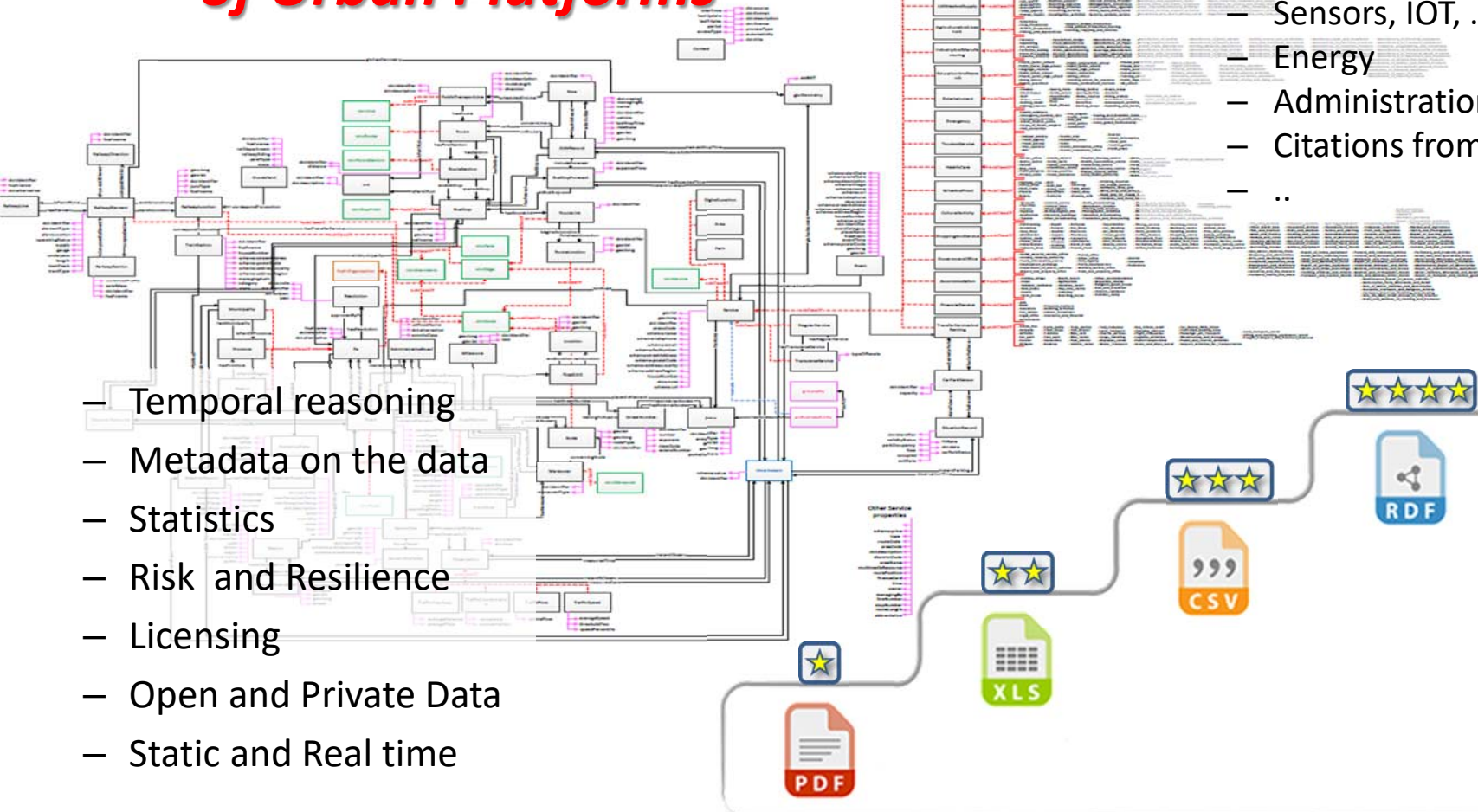


Km4City Ontology - RDF Store



Km4City is a new generation of Urban Platforms

- Street-Guide
- Mobility and transport
- Points of interest
- Sensors, IOT, ..
- Energy
- Administration
- Citations from strings
- ..



- Temporal reasoning
- Metadata on the data
- Statistics
- Risk and Resilience
- Licensing
- Open and Private Data
- Static and Real time
- ..

Big Data Tools



LOD and reasoners





UNIVERSITÀ
DEGLI STUDI
FIRENZE

DINFO
DIPARTIMENTO DI
INGEGNERIA
DELL'INFORMAZIONE

DISIT
DISTRIBUTED SYSTEMS
AND INTERNET
TECHNOLOGIES LAB
<http://www.disit.org>

ServiceMap Dev Tool



Search around a GPS point

Search along a line

Regular Services Transversal Services

Search text into service

Services Categories

De/Select All

Area

Digital location

Happening/Now

Path

Fresh Place

Public Transport Line

Road Sensors

Bus Stops

N. results for each: 200

Search Range: 500 mt

Search Results

Services: 35 of 35 available

Bus Stops: 13 of 13 available

Road Sensors: 2 of 2 available

72 Bus Lines Found.

Bus Line 23

Destinazione: NUOVE → ROVEZZANO → NUOVO PERONE

Bus Line 27

Destinazione: STAGIONE → NUOVO PERONE

Bus Line 30

Destinazione: MAENNA → STAZIONE VIA ALABARDI

Weather Forecast for Municipality of FIRENZE

Sunday Monday Tuesday Wednesday Thursday

light rain and sunny intervals 17°C / 24°C 17°C / 24°C 17°C / 21°C 17°C / 21°C 17°C / 21°C

Search around a GPS point

Search along a line

Regular Services Transversal Services

Search text into service

Services Categories

De/Select All

Accommodation

Advertising

AgricultureAndLivestock

CivilAndMilitaryEngineering

CulturalActivity

EnergyAndPowerResearch

Emergency

Environment

FinanceService

GovernmentOffice

HealthCare

IndustryAndManufacturing

MiningAndQuarrying

ShoppingAndRetail

TransportService

TransportServiceAndRouting

WholesaleAndRetailTrade

Wholesale

WineAndFood

N. results: No Limit

Search Range visible areas

Search Results

Services: 2231 of 2231 available

Query results organized by category

Total number of results: 2231

Bar chart showing results by category

Weather Forecast for Municipality of FIRENZE

Sunday Monday Tuesday Wednesday Thursday

light rain and sunny intervals 17°C / 24°C 17°C / 24°C 17°C / 21°C 17°C / 21°C 17°C / 21°C

Smart City API call generation

Web App HTML5

Mobile Apps

Embed into Web pages

DISPONIBILE SU Google play

Scarica da App Store

Scarica da Windows Store

Indirizzo: VIALE DELLA MERIDIANA, S FIRENZE FI

http://www.disit.dinfo.unifi.it

KM4CITY SERVICE MAP EMBEDDED



Km4City: Open, Flexible, Scalable City Platform

- **Over the 5 stars data**
 - linked open data, RDF store + big data analytics
- **Open**
 - Open to any kind of customization → Open Source, license free
 - Open to any data source → Km4City DataWarehouse
- **Flexible**
 - multiple domains data and processes → Km4City Ontology and Tools
 - Ingesting data via any protocol and approach → Km4City DataWarehouse
- **Scalable**
 - Sustainable and affordable → Flexible and compoundable tools
 - providing support for decision support performing data analytics in real time → Km4City Scalable Back office for Big Data Analytics





UNIVERSITÀ
DEGLI STUDI
FIRENZE

DINFO
DIPARTIMENTO DI
INGEGNERIA
DELL'INFORMAZIONE

DISIT
DISTRIBUTED SYSTEMS
AND INTERNET
TECHNOLOGIES LAB
<http://www.disit.org>

Km4City Roadmap



2021

2013

Km4City 1.1

- Tuscany Map
- Services
- AVM
- Sensors
- Parking
- Cultural Heritage
- Enrichment cities
- Event in the city
- Digital Locations
- Fresh places

- <http://servicemap.km4city.org> API
- <http://log.disit.org>
- <http://www.disit.org/fodd>
- <http://www.disit.org/tv> Twitter Vigilance
- <http://smartds.km4city.org>

- Weather
- Cultural Heritage
- Energy recharge pillar
- Wi-Fi
- Events in the city

2014

2015

Km4City 1.4

- Embed
- More API
- iBeacon

RESOLUTE H2020
2015-2018 - Started

RESilience management guidelines
and Operationalization appLied to
Urban Transport Environment

Km4City 1.5

- SmartDS
- Km4City App

Sii-Mobility SCN
2016-2018 - Started

<http://www.sii-mobility.org>

RESOLUTE H2020
2015-2018 - Started

Sii-Mobility SCN
2016-2018 - Started

2016

REPLICATE H2020
2016-2021 - Started

REPLICATE
RÉnaissance of Places
with Innovative Citizenship
And TEchnology

- Suggestions on demand
- User Behaviour Analysis
- Trajectories and OD

12/2017

6/2017

Today

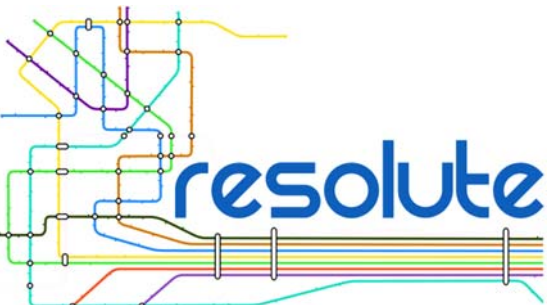
- Territorial areas and paths
- Health, Bike sharing
- Statistics, Energy, ICT, ...
- E-vehicles

- Risk analysis
- Environmental, water
- Data Licensing models
- Energy Meters
- Fi-Ware compliant

- More Sensors, IOE, IOT
- Dashboard Builder
- Territorial areas and paths
- User Engagement
- Mobility and transport
- Resilience Decision Support

GHOST SIR
2016-2019 - Started

GHOST SIR
GHOST Supporting the smart city
a governance centred approach
to smart urbanisation



Horizon 2020
European Union Funding
for Research & Innovation

<http://www.resolute-eu.org>

- Develop European Resilience Management Guidelines (ERMG)
 - Develop a conceptual framework for creating/ maintaining Urban Transport Systems
- Enhance resilience through improved support of human decision making processes, particularly by training professionals and civil users on the ERMG and the RESOLUTE system
- Operationalize and validate the ERMG by implementing the RESOLUTE Collaborative Resilience Assessment and Management Support Systems (CRAMSS) for Urban Transport Systems addressing Road and Urban Rail Infrastructures
 - Pilots in Florence and Athens
- Adoption of the ERMG at EU and Associated Countries level

University of Florence: DISIT lab DINFO (Proj coordinator), DISIA and DST	UNIFI	IT
THALES	THALES	IT
ATTIKOMetro	ATTIKO	GR
Comune di Firenze	CDF	IT
Centre for Research and Technology Hellas	CERTH	GR
Fraunhofer-Gesellschaft zur Förderung der angewandten Forschung e.V.	FHG	DE
HUMANIST	HUMANIST	FR
SWARCO Mizar	SWMIZ	IT
Associação para o Desenvolvimento da Investigação no Instituto Superior de Gestão	ADI-ISG	PT
<i>Consorzio Milano Ricerche</i>	CMR	IT





UNIVERSITÀ
DEGLI STUDI
FIRENZE

DINFO
DIPARTIMENTO DI
INGEGNERIA
DELL'INFORMAZIONE

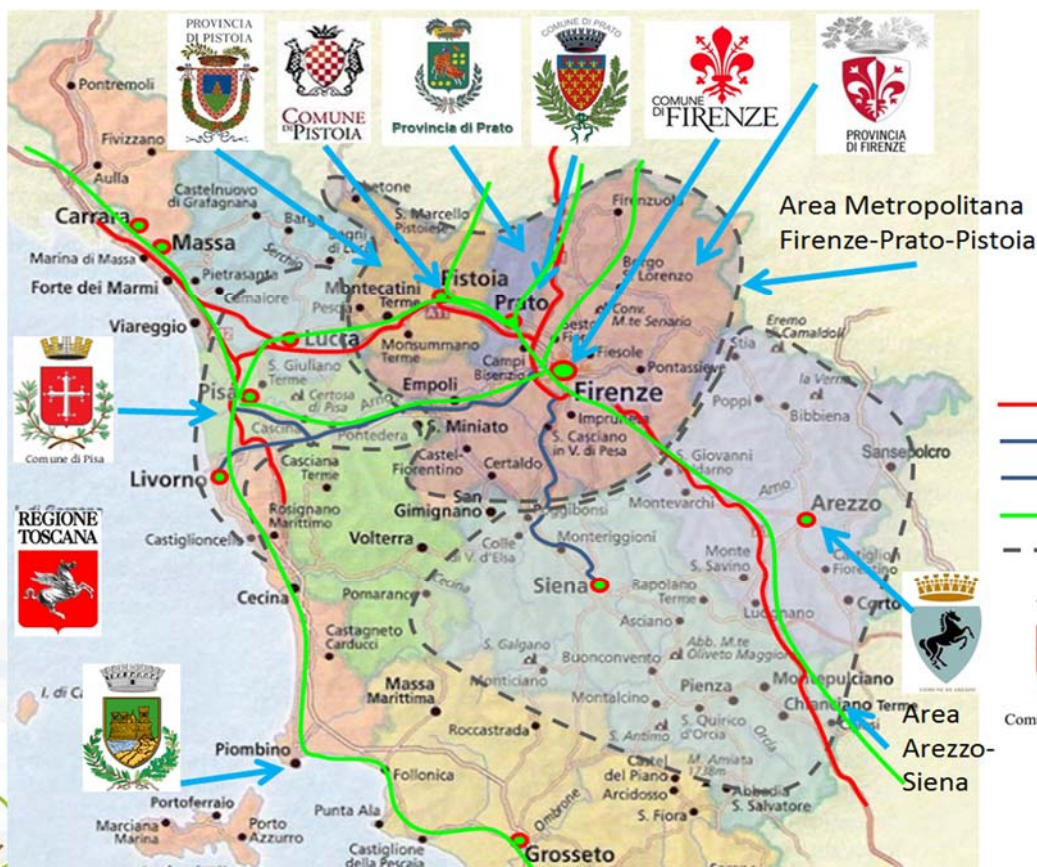
DISIT
DISTRIBUTED SYSTEMS
AND INTERNET
TECHNOLOGIES LAB
<http://www.disit.org>

Sii-Mobility



- Experimentations and validation in Tuscany
- Integration with present central station and subsystems
- DISIT lab, Università di Firenze, is the tech-scientific coordinator

■ <http://www.Sii-Mobility.org>



ataf

tiemme
ECONOMIA

BUSITALIA
GRUPPO FERROVIE DELLO STATO ITALIANE

atam

CTT
CORRISPONDENZA TELEGRAFICA ITALIANA

— Autostrade
— SS Fi-Pi-Li
— SS Fi-Si
— Ferrovie (primarie)
- - Aree

Comune di Perugia

COMUNE DI NAPOLI

*ECM; Swarco Mizar; Inveni
In20; Geoin; QuestIT; Softec;
T.I.M.E.; LiberoLogico;
MIDRA (autostrade,
motorola); ATAF; Tiemme;
CTT Nord; BUSITALIA;
A.T.A.M.; Effective
Knowledge; eWings; Argos
Engineering; Elfi; Calamai &
Agresti; Project; Negentis*



Horizon 2020
European Union Funding
for Research & Innovation



- demonstrate Smart City technologies in energy, transport and ICT in districts in:
 - **San Sebastian (S), Florence (I) and Bristol (UK),**
 - follower cities of Essen, Nilufer and Lausanne
- Cities are the customer: considering local specificities
- Solutions must be replicable, interoperable and scalable.
 - Integrated Infrastructure: deployment of ICT architecture, from internet of things to applications
 - Low energy districts
 - Urban mobility: sustainable and smart urban services

- 1 (coordinator) FOMENTO DE SAN SEBASTIAN FSS SPAIN
- 2 AYUNTAMIENTO DE SAN SEBASTIAN SAN SEBASTIAN SPAIN
- 3 COMUNE DI FLORENCE FLORENCE ITALY
- 4 BRISTOL COUNCIL BRISTOL UNITED KINGDOM
- 5 STADT ESSEN ESSEN GERMANY
- 6 NILUFER BELEDIYESI NILUFER TURKEY
- 7 VILLE DE LAUSANNE LAUSANNE SWITZERLAND
- 8 IKUSI ANGEL IGLESIAS, S.A. IKUSI SPAIN
- 9 ENDESA ENERGÍA, S.A. ENDESA SPAIN
- 10 EUROHELP CONSULTING, S.L. EUROHELP SPAIN
- 11 ILUMINACION INTELIGENTE LUIX, S.L. LUIX SPAIN
- 12 FUNDACION TECNALIA RESEARCH & INNOVATION TECNALIA SPAIN
- 13 EUSKALTEL, S.A. EUSKALTEL SPAIN
- 14 COMPAÑÍA DEL TRANVÍA DE SAN SEBASTIÁN DBUS SPAIN
- 15 CONSIGLIO NAZIONALE DELLE RICERCHE CNR ITALY
- 16 ENEL DISTRIBUZIONE, SPA ENEL ITALY
- 17 MATHEMA, SRL MATHEMA ITALY
- 18 SPES CONSULTING SPES ITALY
- 19 TELECOM ITALIA, SPA TELECOM ITALY
- 20 UNIVERSITA DEGLI STUDI DI FLORENCE UNIFI ITALY: DINFO.DISIT Lab and DIEF
- 21 THALES ITALIA, SPA THALES ITALY
- 22 ZABALA INNOVATION CONSULTING ZABALA SPAIN
- 23 TECHNOMAR TECHNOMAR GERMANY
- 24 UNIVERSITY OF BRISTOL UOB UNITED KINGDOM
- 25 UNIVERSITY OF OXFORD UOXF UNITED KINGDOM
- 26 BRISTOL IS OPEN, LTD BIO UNITED KINGDOM
- 27 ZEETTA NETWORKS ZEETTA UNITED KINGDOM
- 28 KNOWLE WEST MEDIA CENTRE, LGB KWMC UNITED KINGDOM
- 29 TOSHIBA RESEARCH EUROPE, LTD TREL UNITED KINGDOM
- 30 ROUTE MONKEY, LTD ROUTE MONKEY UNITED KINGDOM
- 31 ESOTERIX SYSTMES, LTD ESOTERIX UNITED KINGDOM
- 32 NEC LABORATORIES EUROPE, LTD NEC UNITED KINGDOM
- 33 COMMONWHEELS CAR CLUB CIC CO-WHEELS UNITED KINGDOM
- 34 UNIVERSITY OF THE WEST OF ENGLAND UWE UNITED KINGDOM
- 35 ESADE BUSINESS SCHOOL ESADE SPAIN
- 36 SISTELEC SOLUCIONES DE TELECOMUNICACION, S.L. SISTELEC SPAIN





Governing the smart city: a governance-centred approach to Smart urbanism – GHOST



General Objectives

- Offer a comprehensive framework for measuring and reassessing urban smart development and related rankings
- Critical assessment of Smart City ranking index existence
- Definition of an enabling technology supporting the action plans for strengthening multi-level place-based governance, applied in the tourism context
- Definition of strategies for good smart governance, with the purpose of providing recommendations to start or implement an institutional and development process leading towards smart city governance.

Partners:

University of Cagliari (Coordinator) DICAAR and DMI

University of Florence SAGAS and DISIT

University of Turin ESOMAS

University of Sassari DADU

Under the patronage of the Municipality of Cagliari



Duration: 23/09/2015 - 23/09/2018

<http://sites.unica.it/ghost>



The language of innovation II Forum
Architecture and Urban Planning IV Forum

TJU Shanghai CHINA - UNIFI ITALY
Confucius Institute

ICT Solution for Smart City Urban Platform

Paolo Nesi

University of Florence, DINFO, DISIT lab

<http://www.disit.dinfo.unifi.it>

Paolo.nesi@unifi.it

Smart Cities

15th December 2016

Healthy Cities

16th December 2016

Florence University

