

www.resolute-eu.org

Resilience management guidelines and Operationalization applied to Urban Transport Environment

RESOLUTE project presentation

Emanuele Bellini, emanuele.bellini@unifi.it

Paolo Nesi, paolo.nesi@unifi.it

University of Florence



1st workshop on Resilience
20-22/9/2016 Turin, Italy

Co-ordinated by



UNIVERSITÀ
DEGLI STUDI
FIRENZE



Problem and issues

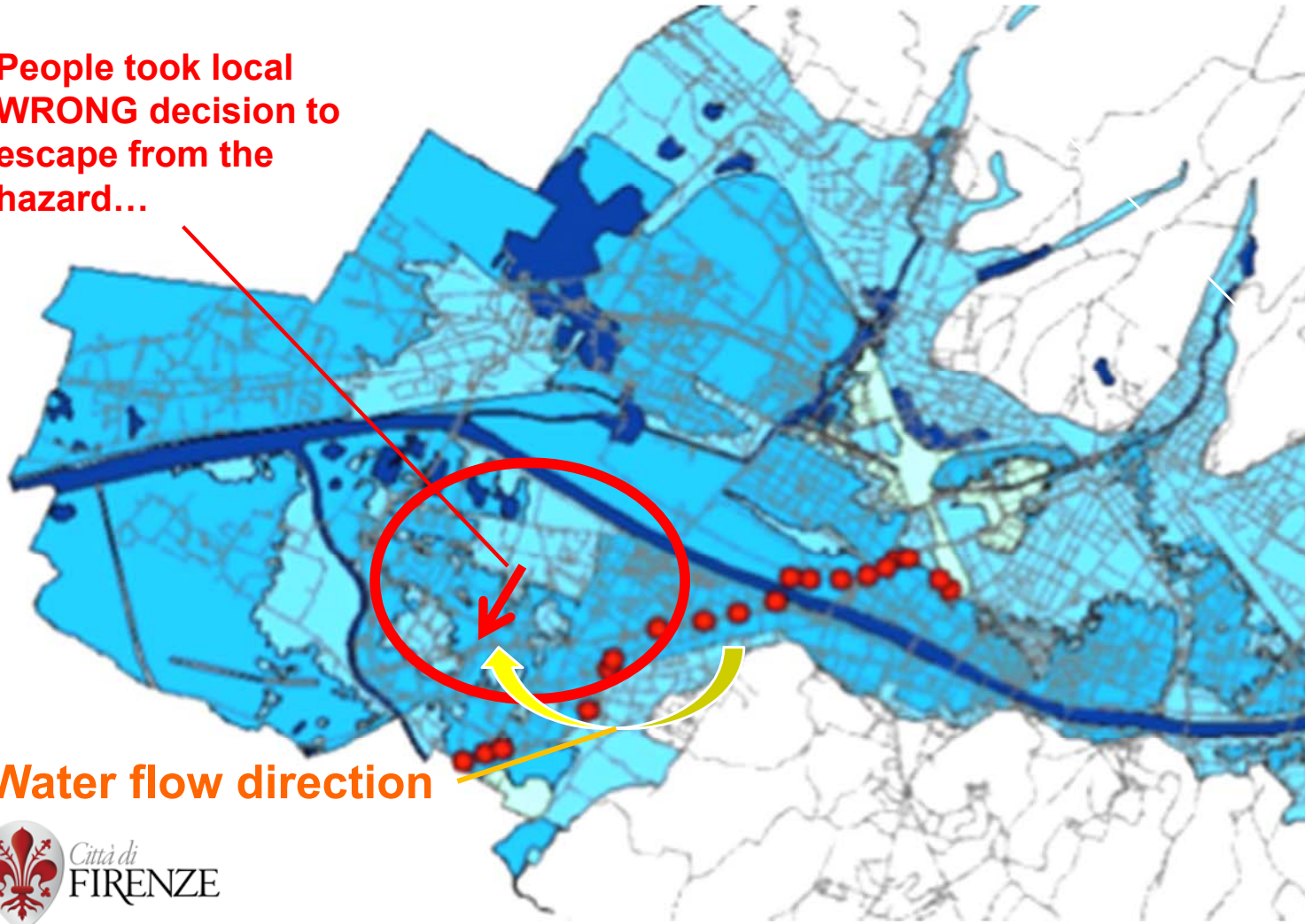
- **Critical infrastructures in the city are strongly interdependent:**
Transport, energy, communication, cyber, health...
- **Critical Infrastructure are hit by natural and/or human made expected and unexpected events.**
- **UTS, Urban Transport System, is one of the most challenging since UTS is the via by which effects may be propagate but also the path used by solutions and the recovery actions.**





Examples: The Big flooding in Florence 1966

People took local **WRONG** decision to escape from the hazard...



- Lack of community preparedness 90% unaware
- Lack of contextual and real time information
- Lack-wrong official early warnings (15 hours passed from the first event at the source)
- Questionable allocation of the resources (all were concentrated at downtown)



Paolo Nesi, Emanuele Bellini, UNIFI
1st workshop on Resilience
Turin, Italy



UNIVERSITÀ
DEGLI STUDI
FIRENZE





Main criticalities

- **Over-specification** of procedures
- **Multi-decision-makers** (civil protection, public administration, infrastructure managers, etc.),
- UTS users (citizens) with their conflicting micro-opportunistic behaviors, different risk perceptions, beliefs, skills, etc.
- **Heterogeneous data sources** with different data delivery rate, quality, reliability and semantics.
- **Fragmented** and sometimes not clearly defined **responsibilities** among UTS actors.
- Needs to optimally manage the **scarcity of resources**
- Needs of a coordinate **multi-channel communication** strategy and a situation-aware communication delivery tools
- Common attitude of the authorities **to neglect the preparing and adapting phases** in favor of the absorbing and reacting phases.
- Weak population preparedness against unusual extreme events and wrong perception about their recurrence probability and potential effects.



Paolo Nesi, Emanuele Bellini, UNIFI
1st workshop on Resilience
Turin, Italy



UNIVERSITÀ
DEGLI STUDI
FIRENZE





RESOLUTE 5 Objectives

Obj1- Conducting a systematic review and assessment of the state of the art of the Resilience assessment and Management concepts, national guidelines and their implementation strategies in order to develop a conceptual framework for resilience within Urban Transport Systems

Obj2 - Development of European Resilience Management Guidelines (ERMG)

Obj3 - Operationalize and validate the ERMG by implementing the RESOLUTE Collaborative Resilience Assessment and Management Support System (CRAMSS) for Urban Transport System (UTS) addressing Roads and Rails Infrastructures

Obj4 – Enhancing resilience through improved support to human decision making processes, particularly through increased focus on the training of final users (first responders, civil protections, infrastructure managers) and population on ERMG and RESOLUTE system

Obj5 – ERMG wide dissemination, acceptance and adoption at EU and Associated Countries level



Paolo Nesi, Emanuele Bellini, UNIFI
1st workshop on Resilience
Turin, Italy



UNIVERSITÀ
DEGLI STUDI
FIRENZE





Main Outcomes

- **European Resilience Management Guidelines** – (guidelines) – consensus driven approach improve guidelines acceptability at EU level
 - general version, and UTS version
 - <http://www.resolute-eu.org/index.php/deliverables>
- **CRAMSS** – (tools and algorithms) – ontology based static and dynamic CI data integration, processing and analysing platform
- **Mobile Emergency app** – (tools and procedures) – supporting users in their local decision before (early warnings), during and after an event
- **Game based training app** – (tools and procedures) – improving the current preparedness of the citizen in order to increase the community self-resilience



Paolo Nesi, Emanuele Bellini, UNIFI
1st workshop on Resilience
Turin, Italy

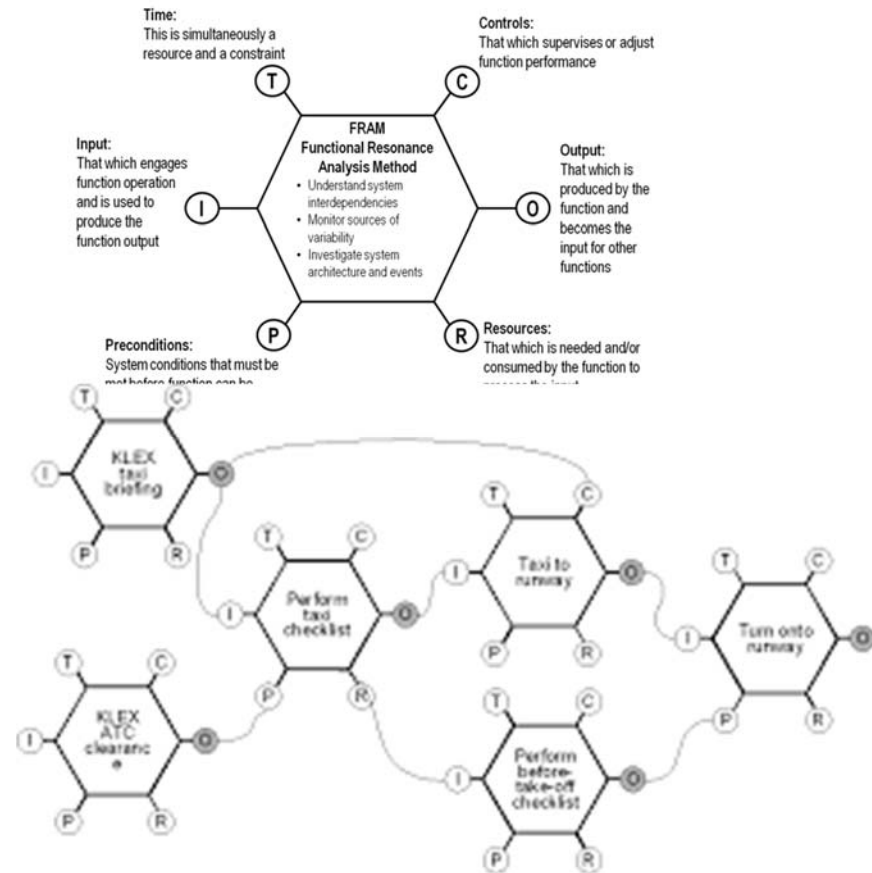
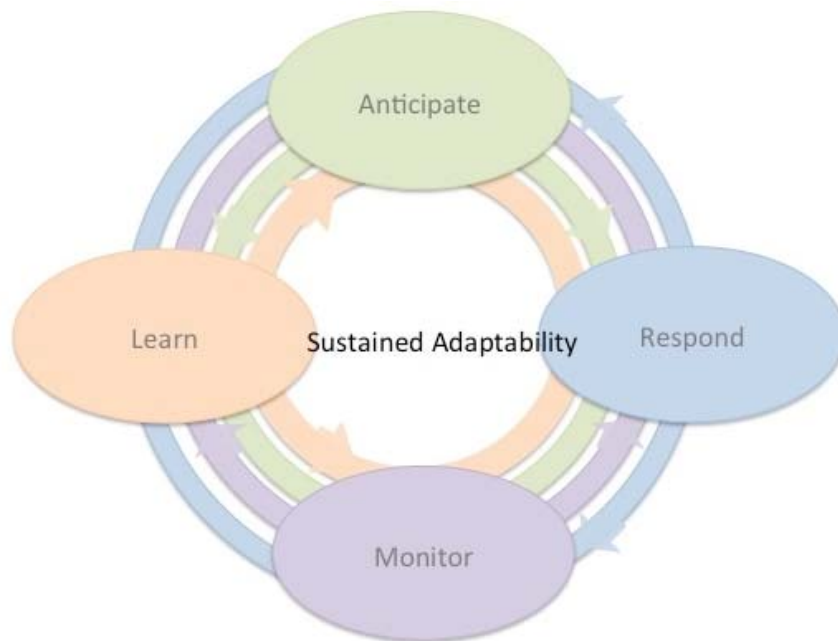


UNIVERSITÀ
DEGLI STUDI
FIRENZE



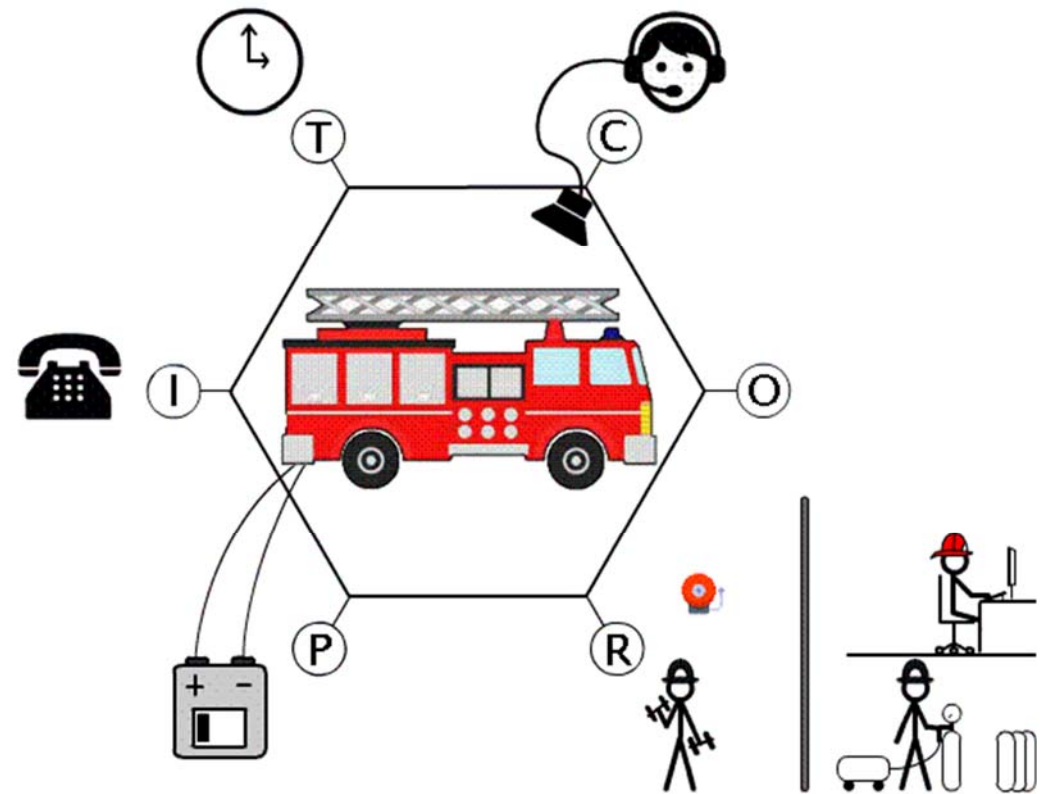
Sustained Adaptability and FRAM

A system resilience side in the ability to understand and monitor resources and the capacities that they provide towards coping with both expected and unexpected amplitudes of performance variability



Functional Resonance Analysis Method

- **Success and failure are equivalent** in the sense that they both emerge from performance variability.
- **Variability**, intended as a way for people to adjust tools and procedures to match operating conditions.
- Emergence of either **success or failure** is due to unexpected combination of variability from multiple functions.
- The unexpected “amplified” effects of interactions between different sources of variability are at the origin of the phenomenon described by functional resonance.

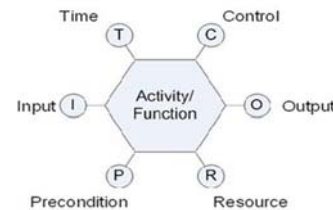


Workflow to produce guidelines

Stakeholder interviews
(workshop, F2F, etc.)

Collect data about how the system work
in general (daily operation)

(High Level) Desired
System Functions
identification
And description



Define an high level functions
that are present in all kind of CI
(Technical, Organizational, Human)

Performance Variability
(Coupling & Common
Condition)



- Function coupling
- Common Condition

How to dampen
performance
Variability of the function

Provide advice for sustaining the capability of each
Functions to adapt to the variable conditions for each
CC and Coupling



European Resilience Management Guidelines

- **Level I:** comparing “desired functions” defined in ERMG against functions in place through a FRAM analysis of the
 - **Critical Infrastructures addressed.**
- **Level II:** assessing how functions implemented in the CIs are actually aligned with the ERMG recommendations.
- **Level III:** assessing function interdependencies. The ERMG provides a number of desired interdependencies capable to increase system resilience.



Paolo Nesi, Emanuele Bellini, UNIFI
1st workshop on Resilience
Turin, Italy



UNIVERSITÀ
DEGLI STUDI
FIRENZE





ERMG operationalization

Three main layers

- 1. Complex System modeling:** function, processes, resources, time, events, etc..
 - Functional Resonance Analysis Method, FRAM
 - Resilience Analysis Grid, RAG
 - -Network science
- 2. Decision Support System, DSS**
 - E.g.: System Thinking, Goal Models
- 3. Data, big data access and exploitation**
 - Data Analytics
 - Internet of Things, sensors, flows



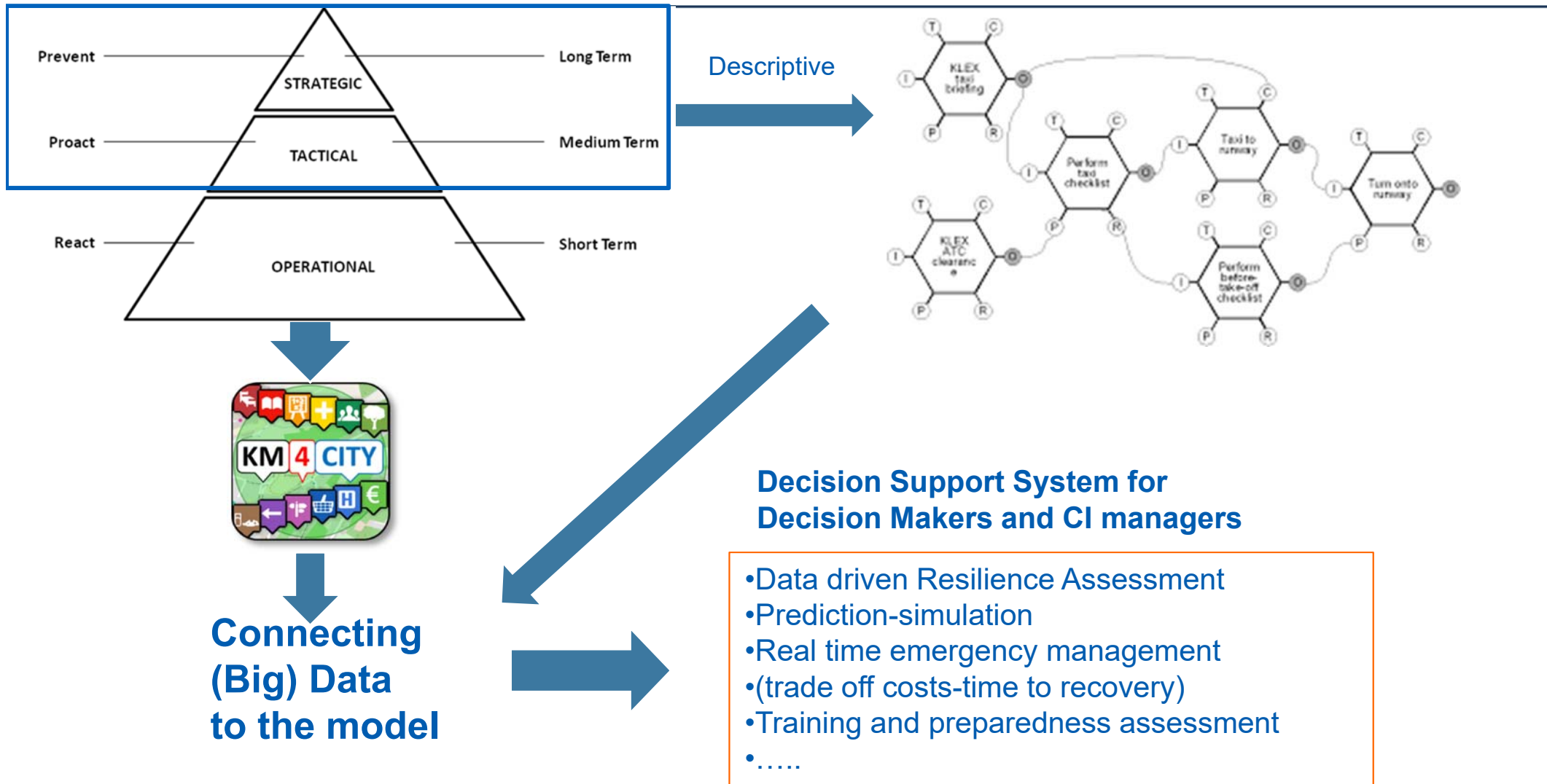
Paolo Nesi, Emanuele Bellini, UNIFI
1st workshop on Resilience
Turin, Italy



UNIVERSITÀ
DEGLI STUDI
FIRENZE



Big KID (Knowledge, Information, Data) Approach



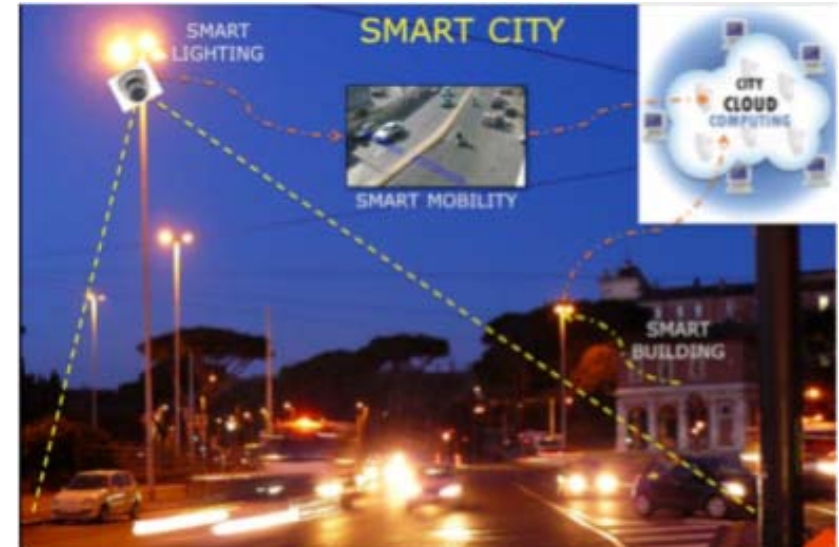


UTS and Big Data

Huge amount of data are produced from: Open Data, Linked Data, Real Time sensors, Twitter, WiFi, etc.
(**Big Data: velocity, variety, volume, veracity, ...**)

Data available and collected through km4cty platform
<http://www.disit.org/km4city>

- Traffic data flows
- Public mobility services real time positions (e.g. bus, metro)
- Open Data (close to 1K available datasets including
- Hidrogeological risk maps)
- City free Wifi covers the 80% of the city (tracking people flows and movement)
- Social networks (twitters)
- IoT (real time data from environmental sensors e.g. level of the river)
- Real time Parking availability
- City services (business,
- Real time status of the city hospitals-beds availability
- Meteo data
- Cadastre data
-**but more data are needed.**



ISSUES

**Multiple data owners-producers,
Different delivery rate,
Different formats,
Different data quality,
Different licence for data reuse,
etc...**



Paolo Nesi, Emanuele Bellini, UNIFI
1st workshop on Resilience
Turin, Italy



UNIVERSITÀ
DEGLI STUDI
FIRENZE



Transport systems
Mobility, parking



Public Service
Govern,



Sensors,
IOT



Environment,
Water, energy



Shops,
services,
operators



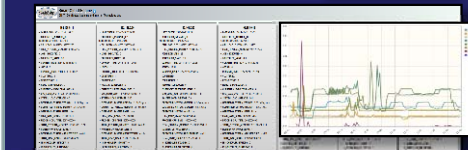
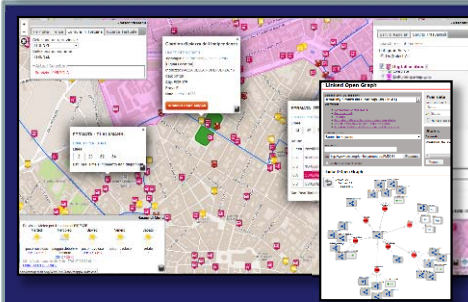
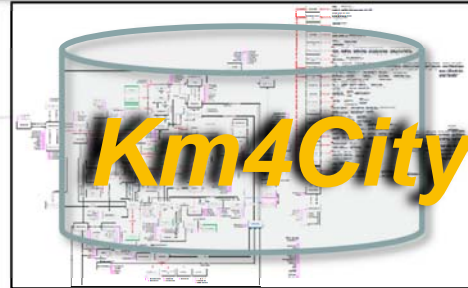
Social Media
WiFi, network



Static, Slow and Real Time data flows

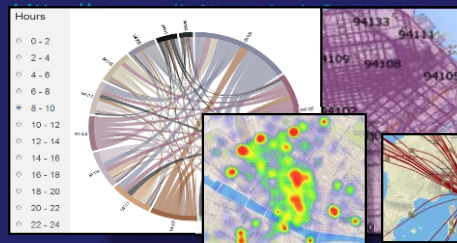
DISCES -- Distributed and parallel architecture on Cloud

Km4City Smart City Engine



User Profiling and Suggestion Engine

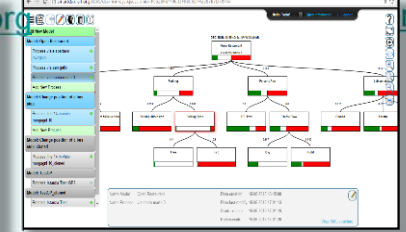
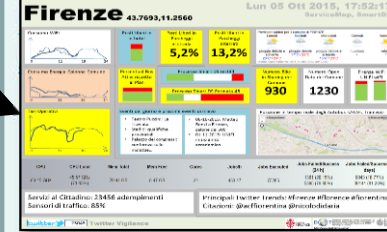
Flow and Origin Destination Matrix



Km4City Tools for Developers

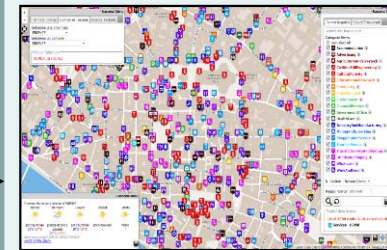
Km4City Smart City API

Tools for City Operators and Decision Makers Smart City Dashboard Smart Decision Support



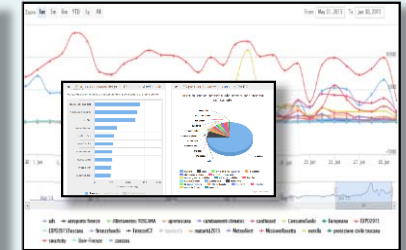
Service map browser

[Http://servicemap.km4city.org](http://servicemap.km4city.org)

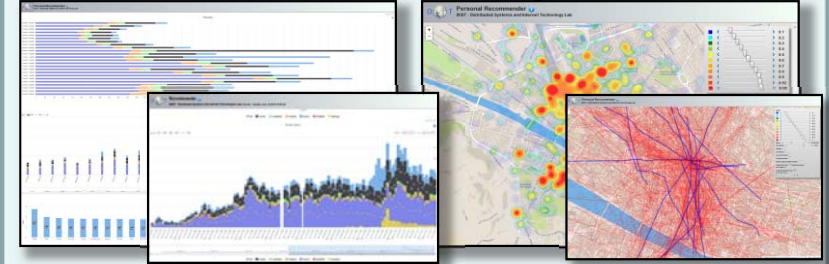


Twitter Vigilance

[Http://www.disit.org/tv](http://www.disit.org/tv)



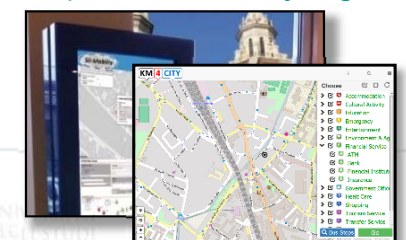
Collective User behavior Analyzer



Tools for Final Users

Mobile e Web Apps

[Http://www.km4city.org](http://www.km4city.org)



[Http://www.km4city.org/app](http://www.km4city.org/app)

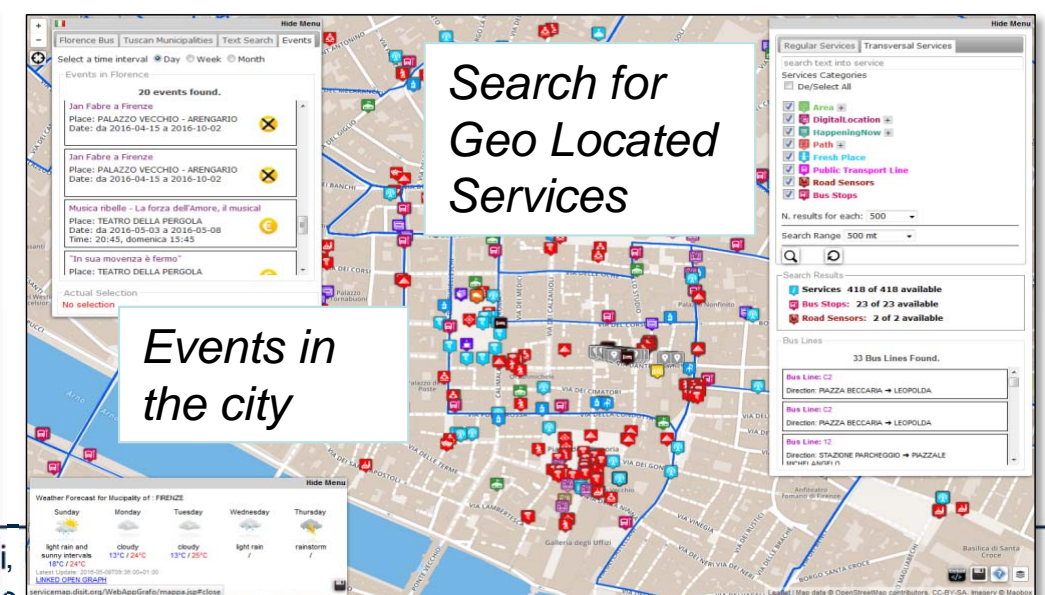
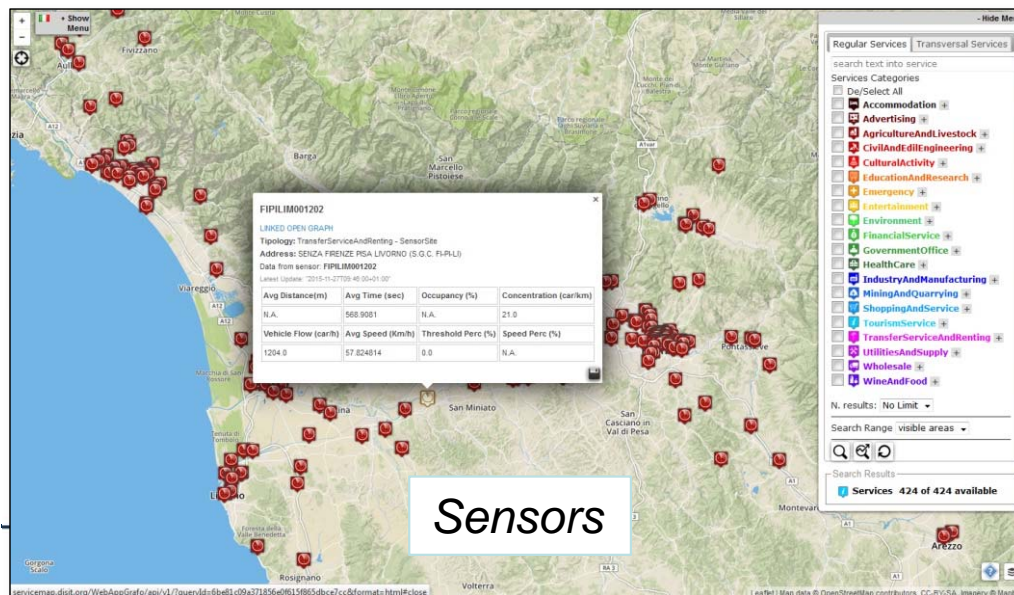
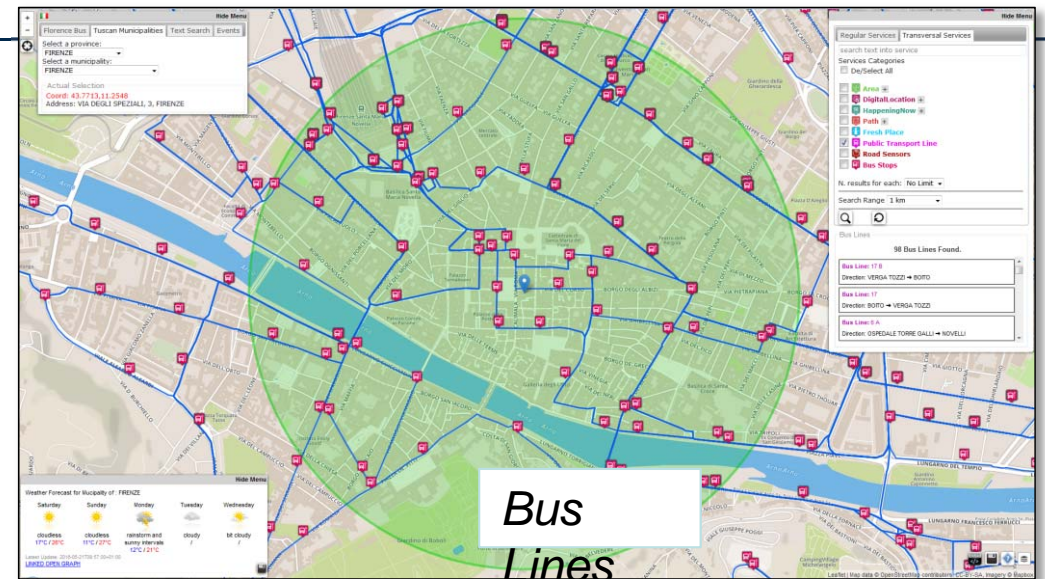
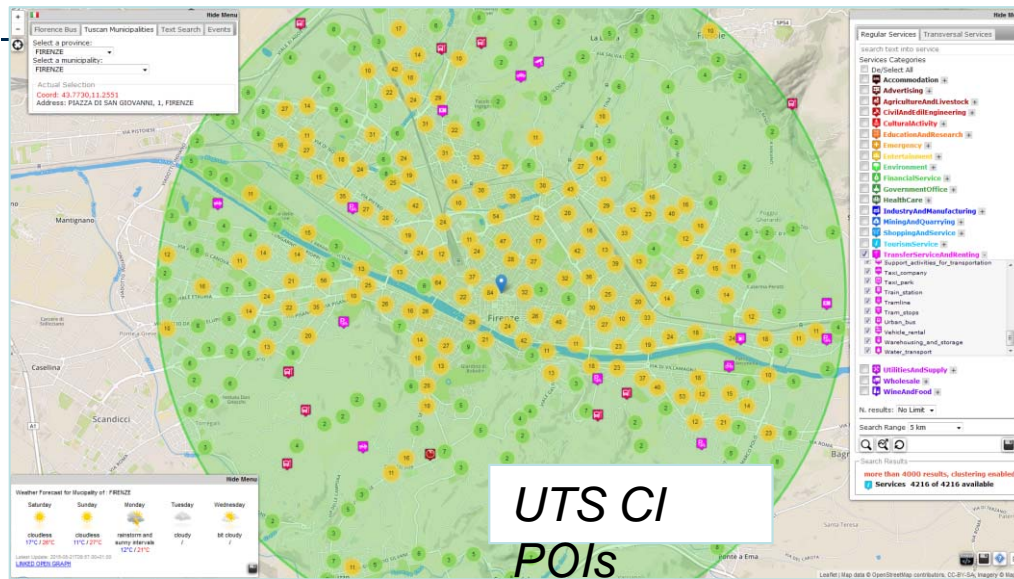
Turin, Italy
www.km4city.org



@RESOLUTE_eu #RESOLUTE #ERGM



Firenze Smart City: UTS +



1st workshop on Resilience
Turin, Italy



DEGLI STUDI
FIRENZE

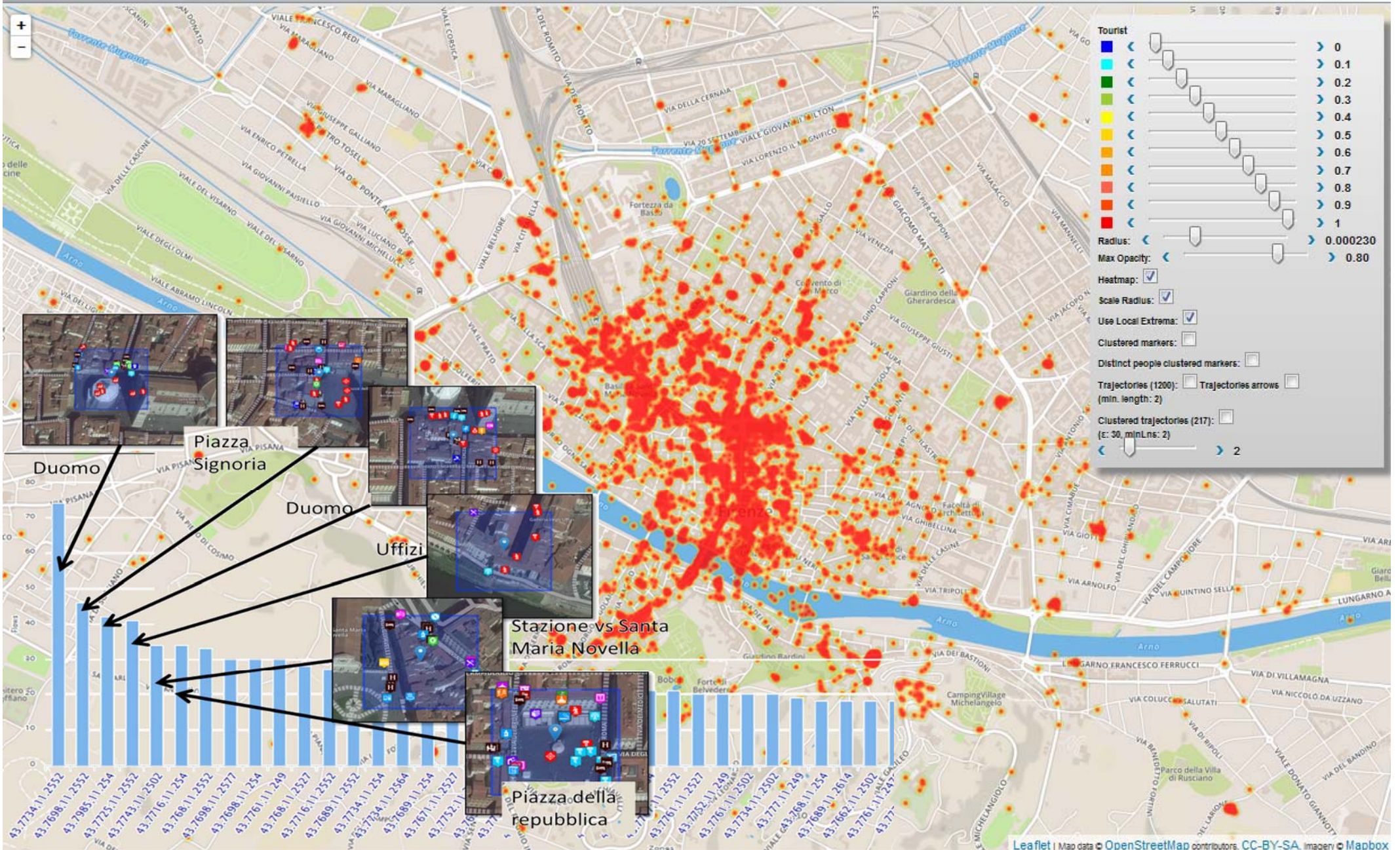


User Behavior Analyzer



Co-funded by the European Union under H2020 DRS' 07-2014

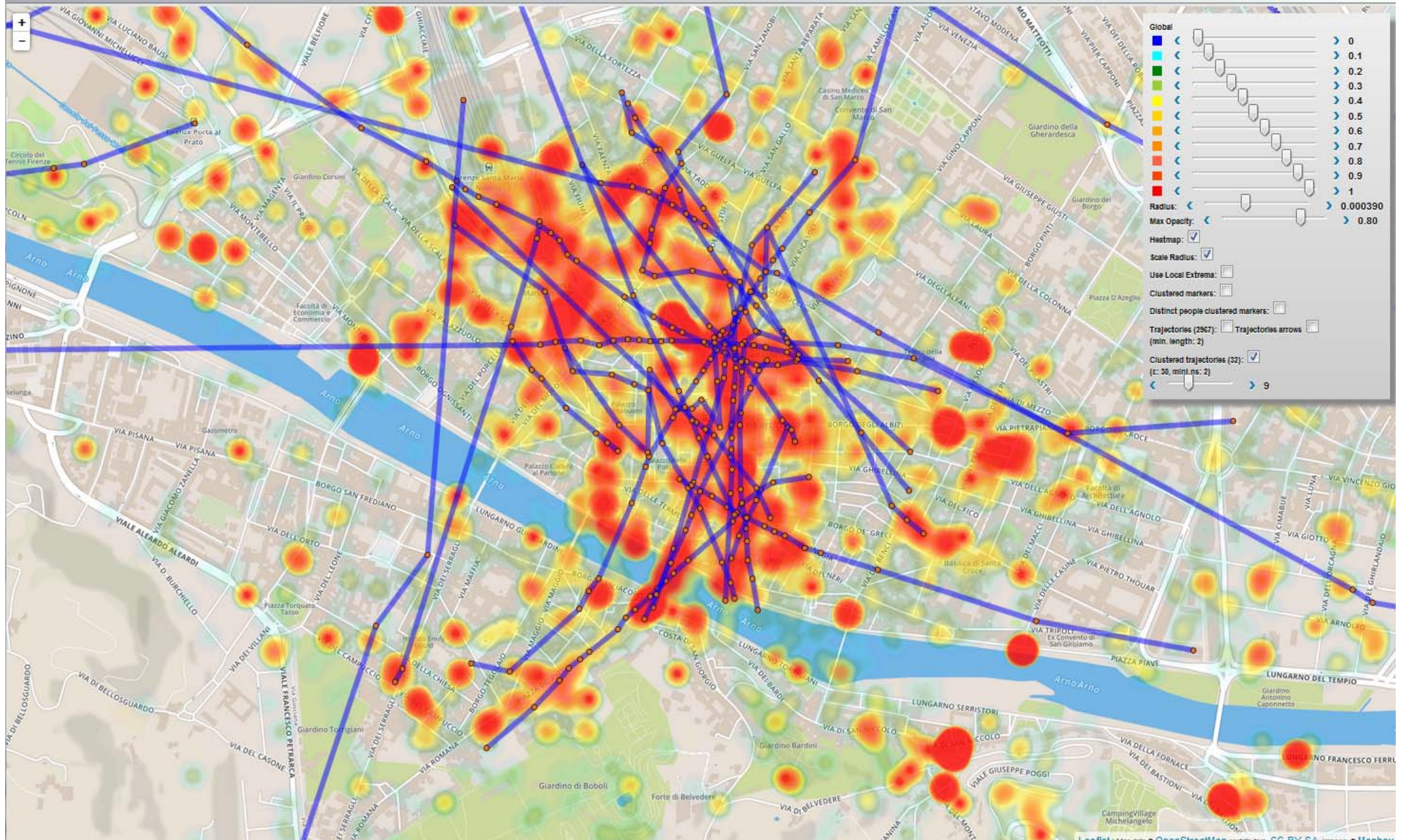
DISIT Personal Recommender
 DISIT - Distributed Systems and Internet Technology Lab



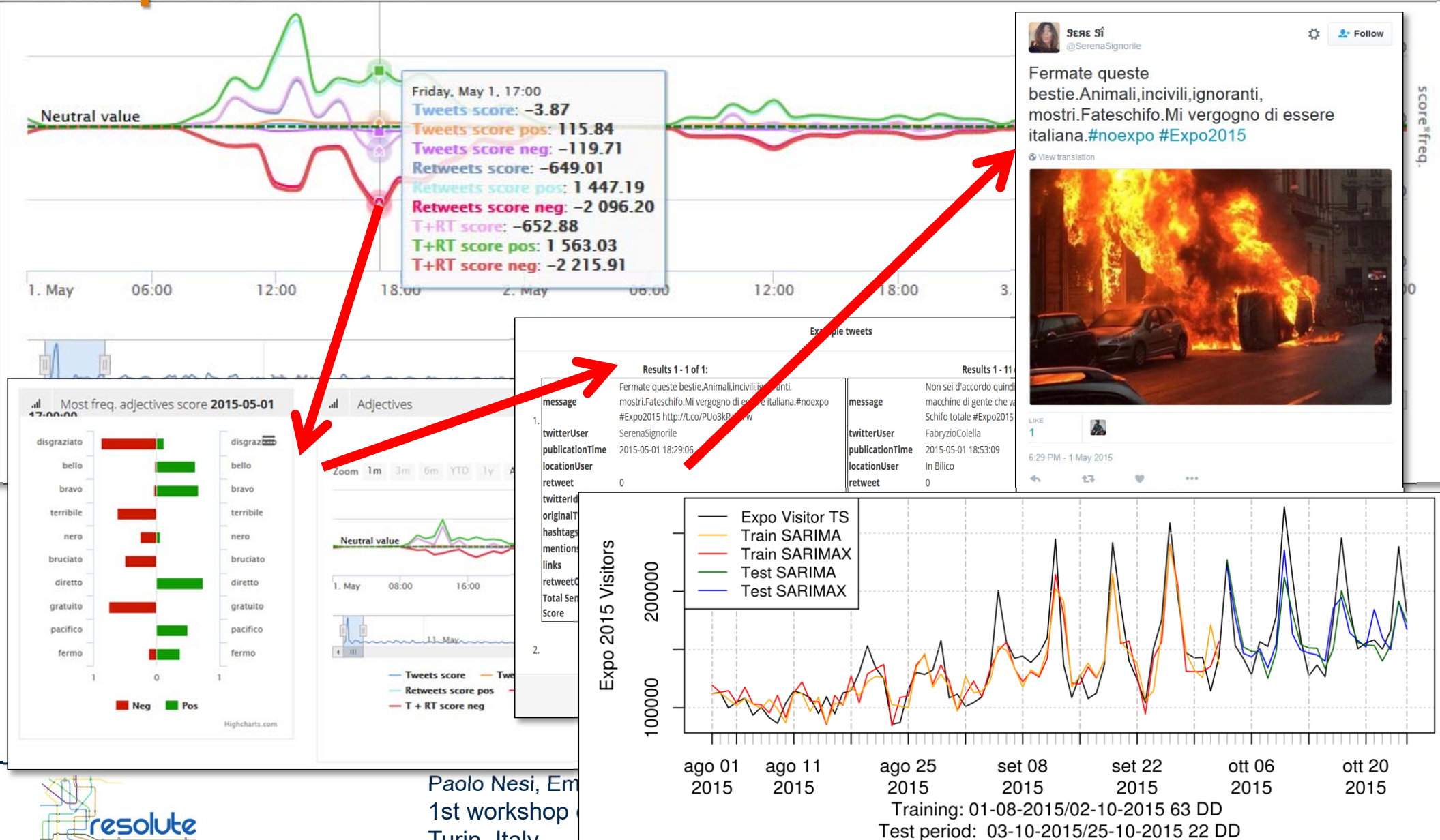


User Behavior Analyzer

DISIT Personal Recommender
DISIT - Distributed Systems and Internet Technology Lab



Twitter Vigilance, Sentiment Analysis, Monitoring and prediction



Paolo Nesi, Em
1st workshop
Turin, Italy

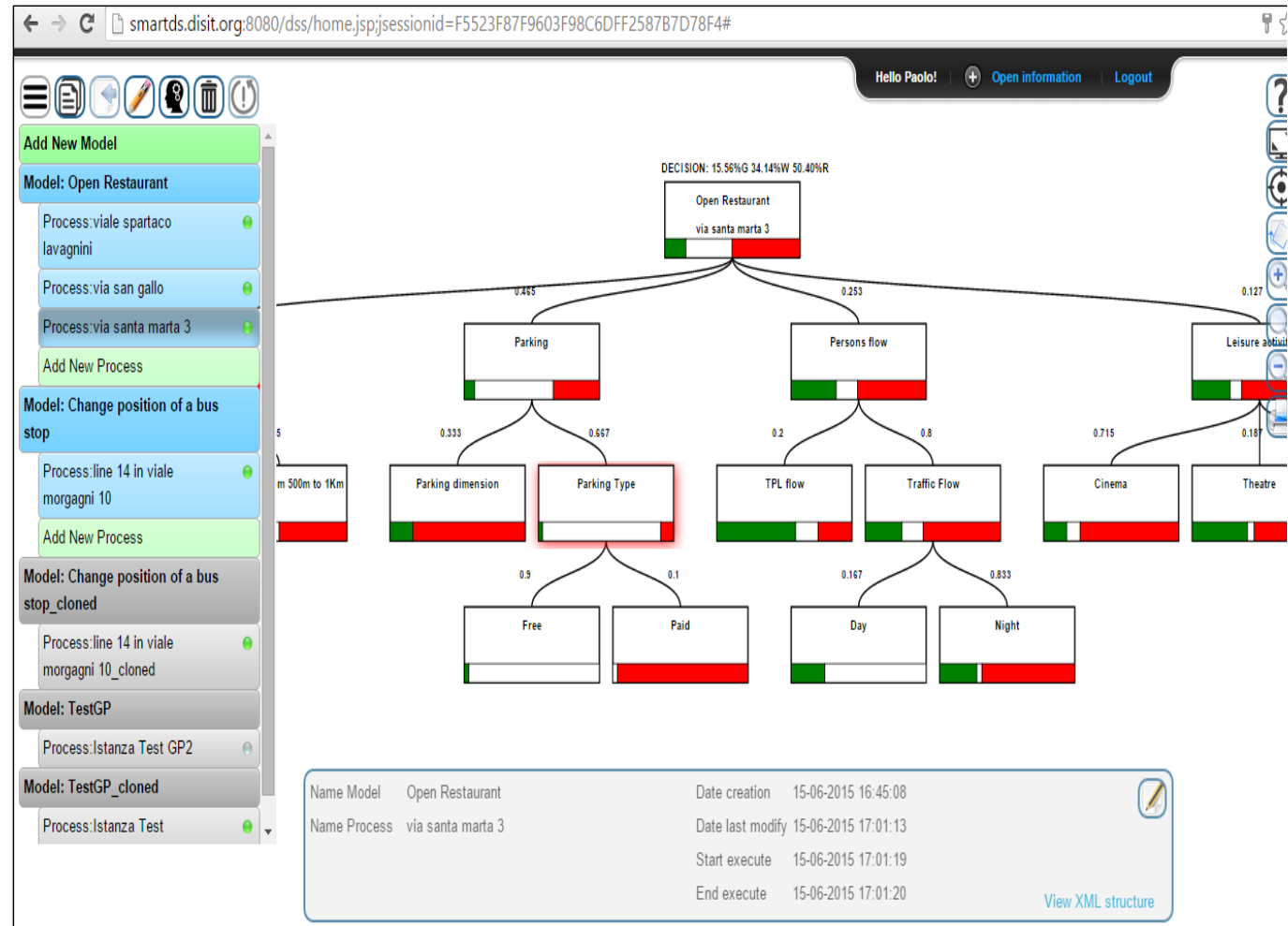
Figure 5: Comparison among the selected predictive models discussed and presented in Tables 2 and 3 with respect to the real number of visitors. Both training and validation periods are reported.

Smart Decision Support

- **Smart Decision Support System based on System Thinking plus**
- Actions to city reaction, resilience, smartness..

Enforcing

- Mathematical model for propagation of decision confidence..
- Collaborative work....,
- Processes connected to city data: DB, RDF Store, Twitter, etc.
- Production of alerts/alarms
- Data analytics process
- Twitter Processes
- reuse, copy past, ...



Dashboarding city resilience



Co-funded by the European Union under H2020 DRS' 07-2014

Firenze 43.7893, 11.2560 Tue 10 Nov @ 12:53:21 ServiceMap, SmartDS

- WiFi operativi: 64.1%
- SmartDS: via santa marta 3: 21.5%
- Informazioni disponibili: 21
- Servizi duplicati: 20
- Accessi ai servizi singoli (web e mobile): 22
- Servizi ai Cittadini: 23452
- Eventi giornalieri: 29
- Open Data disponibili: 143
- Principali Twitter Trends: #firenze, #fiorentina, #postevocchio
- Previsioni RT: 98.9%
- Previsioni meteo del comune di FIRENZE: 29591
- Parceggi RT: 66.0%
- Smart City Engine: CPU 0.1%, Mem Totale 24034 MB, Job Eseguiti 954
- Query Servicemap: 22
- Query Kmscity API: 22
- Stato corse ATAF: Linee: 6 | 17 | 4
- in Orario in Anticipo in Ritardo: 60.6% | 17.1% | 22.4%
- 99.3%
- Twitter: 2264 per giorno, 1378 per giorno Twitter Vigilance

Model: FMV Model

- Process: New Instance
- Model: Model Loaded
- Model: Operations Room
- Model: C.I Management
- Model: test group2

Name Model: FMV Model
User owner: 5 - disit
Date creation: 2016-04-04 15:59
Date last modify: 2016-04-04 15:59
Description: FMV Model



Paolo Nesi, Emanuele Bellini, UNIFI
1st workshop on Resilience
Turin, Italy

www.resolute-eu.org @RESOL

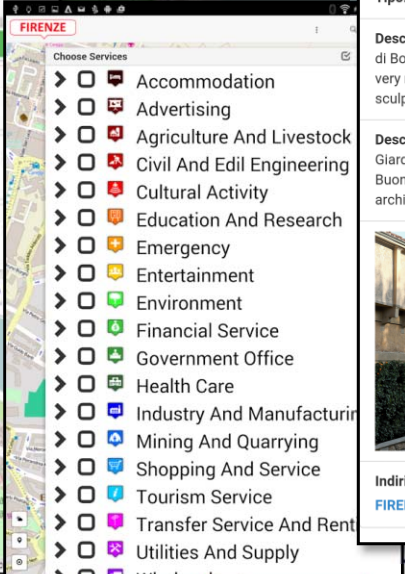
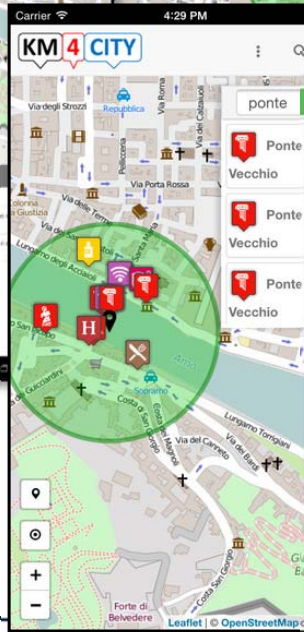
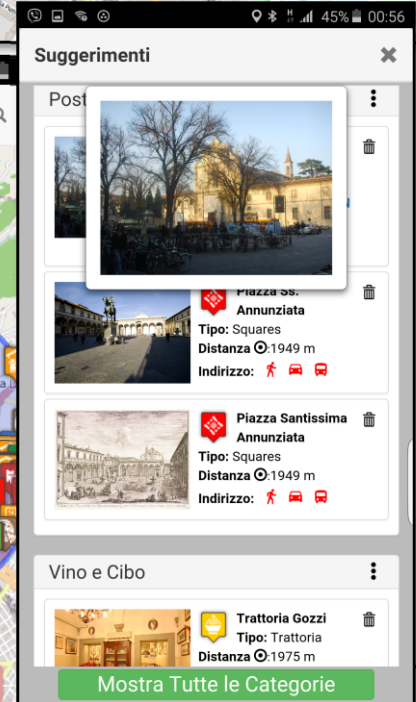
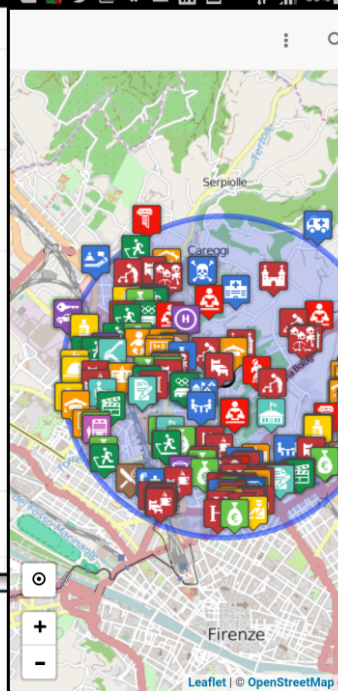
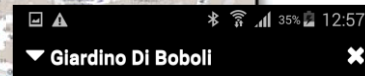
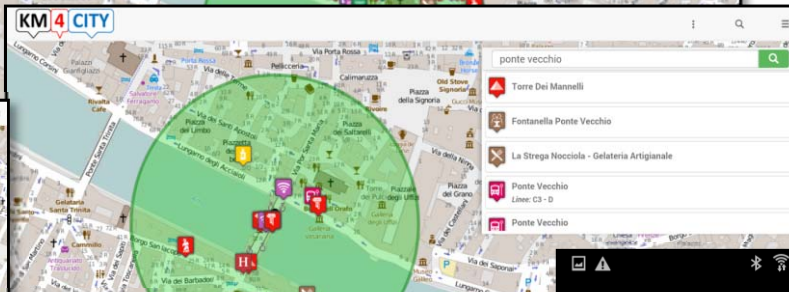
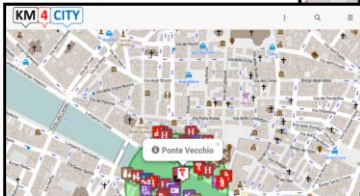
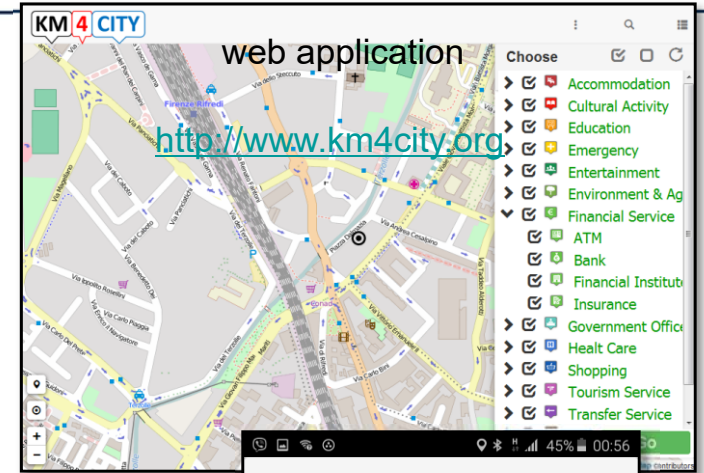


Data and Service Aggregator





Emergency Mobile App



ellini, UNIFI

1st Workshop on Resilience
Turin, Italy



Game based training for preparedness

Game-based training has been associated with greater cognitive effort - an important condition for skill learning and improvements in

- skill execution,
- problem solving and
- decision-making

following game-based training than training involving repetitious technical instruction.

In RESOLUTE we design and develop a game based **meta-application** for Training in order to train different user categories and to improve the community self resilience





Collaboration with other initiatives (DRS7-14-...)

Building a common language about resilience and related indicators collaboratively

List Concepts

You are in: Home » Concepts

Concepts Insert new concepts

Lemma	Definition	Ontoclasses	Specification of the applied	Associated indexes	Last modification date	User
employee	Employees are all those workers who hold the type of job defined as paid employment jobs. Employees with stable contracts are those employees who have had, and continue to have, an explicit (written or oral) or implicit contract of employment, or a succession of such contracts, with the same employer on a continuous basis.	RESOLUTE	No	2	11/07/2016, 10:50	Administrator
training staff employees	training staff employees	RESOLUTE	No	2	11/07/2016, 10:50	Administrator
Risk	is a combination of the consequences of an event (hazard) and the associated likelihood/probability of its occurrence.	RESOLUTE	No	0	11/07/2016, 10:50	Administrator
Risk	The possibility of loss, damage or injury. The level of risk is a condition of two factors: (1) the value placed on the asset by its owner/operator and the impact of loss or change to the asset, and (2) the likelihood that a specific vulnerability will be exploited by a particular threat.	RESOLUTE	No	0	11/07/2016, 10:50	Administrator



Paolo Nesi, Emanuele Bellini, UNIFI
1st workshop on Resilience
Turin, Italy



UNIVERSITÀ
DEGLI STUDI
FIRENZE





RESOLUTE Consortium

THALES

CERTH





Thank you



Paolo Nesi, Emanuele Bellini, UNIFI
1st workshop on Resilience
Turin, Italy



UNIVERSITÀ
DEGLI STUDI
FIRENZE

