



UNIVERSITÀ
DEGLI STUDI
FIRENZE

DINFO
DIPARTIMENTO DI
INGEGNERIA
DELL'INFORMAZIONE

DISIT
DISTRIBUTED SYSTEMS
AND INTERNET
TECHNOLOGIES LAB



Horizon 2020
European Union Funding
for Research & Innovation

Integrated Infrastructure for Urban Platform in Florence

Paolo Nesi, paolo.nesi@unifi.it

DISIT Lab, [Http://www.disit.org](http://www.disit.org)

[Http://www.km4city.org](http://www.km4city.org)





Horizon 2020
European Union Funding
for Research & Innovation

- demonstrate Smart City technologies in energy, transport and ICT in districts in:
 - San Sebastian, **Florence** and Bristol,
 - follower cities of Essen, Nilufer and Lausanne
- Cities are the customer: considering local specificities
- Solutions must be replicable, interoperable and scalable.
 - **Integrated Infrastructure: deployment of ICT architecture, from internet of things to applications**
 - Low energy districts
 - **Urban mobility:** sustainable and smart urban services

- 1 (coordinator) FOMENTO DE SAN SEBASTIAN FSS SPAIN
- 2 AYUNTAMIENTO DE SAN SEBASTIAN SAN SEBASTIAN SPAIN
- 3 COMUNE DI FLORENCE FLORENCE ITALY
- 4 BRISTOL COUNCIL BRISTOL UNITED KINGDOM
- 5 STADT ESSEN ESSEN GERMANY
- 6 NILUFER BELEDIYESI NILUFER TURKEY
- 7 VILLE DE LAUSANNE LAUSANNE SWITZERLAND
- 8 IKUSI ANGEL IGLESIAS, S.A. IKUSI SPAIN
- 9 ENDESA ENERGÍA, S.A. ENDESA SPAIN
- 10 EUROHELP CONSULTING, S.L. EUROHELP SPAIN
- 11 ILUMINACION INTELIGENTE LUIX, S.L. LUIX SPAIN
- 12 FUNDACION TECNALIA RESEARCH & INNOVATION TECNALIA SPAIN
- 13 EUSKALTEL, S.A. EUSKALTEL SPAIN
- 14 COMPAÑÍA DEL TRANVÍA DE SAN SEBASTIÁN DBUS SPAIN
- 15 CONSIGLIO NAZIONALE DELLE RICERCHE CNR ITALY
- 16 ENEL DISTRIBUZIONE, SPA ENEL ITALY
- 17 MATHEMA, SRL MATHEMA ITALY
- 18 SPES CONSULTING SPES ITALY
- 19 TELECOM ITALIA, SPA TELECOM ITALY
- 20 UNIVERSITA DEGLI STUDI DI FLORENCE UNIFI ITALY: **DINFO.DISIT Lab and DIEF**
- 21 THALES ITALIA, SPA THALES ITALY
- 22 ZABALA INNOVATION CONSULTING ZABALA SPAIN
- 23 TECHNOMAR TECHNOMAR GERMANY
- 24 UNIVERSITY OF BRISTOL UOB UNITED KINGDOM
- 25 UNIVERSITY OF OXFORD UOXF UNITED KINGDOM
- 26 BRISTOL IS OPEN, LTD BIO UNITED KINGDOM
- 27 ZEETTA NETWORKS ZEETTA UNITED KINGDOM
- 28 KNOWLE WEST MEDIA CENTRE, LGB KWMC UNITED KINGDOM
- 29 TOSHIBA RESEARCH EUROPE, LTD TREL UNITED KINGDOM
- 30 ROUTE MONKEY, LTD ROUTE MONKEY UNITED KINGDOM
- 31 ESOTERIX SYSTEMS, LTD ESOTERIX UNITED KINGDOM
- 32 NEC LABORATORIES EUROPE, LTD NEC UNITED KINGDOM
- 33 COMMONWHEELS CAR CLUB CIC CO-WHEELS UNITED KINGDOM
- 34 UNIVERSITY OF THE WEST OF ENGLAND UWE UNITED KINGDOM
- 35 ESADE BUSINESS SCHOOL ESADE SPAIN
- 36 SISTELEC SOLUCIONES DE TELECOMUNICACION, S.L. SISTELEC SPAIN



UNIVERSITÀ
DEGLI STUDI
FIRENZE

DINFO
DIPARTIMENTO DI
INGEGNERIA
DELL'INFORMAZIONE

DISIT
DISTRIBUTED SYSTEMS
AND INTERNET
TECHNOLOGIES LAB
<http://www.disit.org>

Integrated Urban Platform



- **Aggregate & integrate data and streams of any urban system, operator, provider, user, .., exploiting**
 - open data, IOT, sensors, internet of everything,
 - cloud, mobile devices, Wi-Fi, social media,
 - big data analytics, ecc;
- **Perform integrated and unified data management and data analytics by a set of tools at service of city operators and city users, to:**
 - Control Room, Real Time Monitoring tools,
 - Perform predictions, reasoning, business intelligence, city users behavior analysis
- **Produce value from data enabling to**
 - Stimulate virtuous behavior, influence City Users!
 - Increase efficiency in energy consumption
 - Reduce pollution and traffic congestion
 - Improve quality of service, quality of life
 - Create an ecosystem for innovation and punt in action any smart city solutions and services.



UNIVERSITÀ
DEGLI STUDI
FIRENZE

DINFO
DIPARTIMENTO DI
INGEGNERIA
DELL'INFORMAZIONE

DISIT
DISTRIBUTED SYSTEMS
AND INTERNET
TECHNOLOGIES LAB
<http://www.disit.org>



Horizon 2020
European Union Funding
for Research & Innovation



DISIT Lab actions for REPLICATE

- **Integrated infrastructure: aggregation model and urban platform**
 - Adoption of Km4City solutions and tools as starting point
 - Improvements of Km4City ontology, by adding:
 - energy, sustainable mobility, dashboarding, urban services, IOT of several kind
 - Improving Smart City API, providing support for:
 - Above mentioned domains in addition to those of Km4City for developing energy based APPs REPLICATE
- Developing and putting in place a **dashboard** system and development tool





UNIVERSITÀ
DEGLI STUDI
FIRENZE

DINFO
DIPARTIMENTO DI
INGEGNERIA
DELL'INFORMAZIONE

DISIT
DISTRIBUTED SYSTEMS
AND INTERNET
TECHNOLOGIES LAB

smart city expo
WORLD CONGRESS

Stand: F680



- Nascondi Menu

Fermate Firenze Comuni in Toscana Ricerca Testuale

Seleziona una provincia:
FIRENZE

Seleziona un comune:
FIRENZE

Actual Selection
COMUNE di FIRENZE

Previsioni Meteo per il comune di FIRENZE:

Martedì	Mercoledì	Giovedì	Venerdì	Sabato
poco nuvoloso 23°C / 27°C	pioggia debole e schiarite	poco nuvoloso 20°C / 33°C	poco nuvoloso	velato

<http://servicemap.km4city.org>

Road Graph (Tuscany region)

- 132,923 Roads
- 389,711 Road Elements
- 318,160 Road Nodes
- 1,508,207 Street Numbers

Services (20 cat, 512 cat.)

- 16 Pub. Transport Operators
- 21.280 Bus stops & 1081 bus lines
- 210 Parking areas
- 796 Traffic Sensors
- Info on: points, paths, areas, etc.

Dynamic/real-time

- bus lines: 144 updates X day X line
- parking status: 76 updates X day X sensor
- traffic Sensors: 288 updates X day X sensor
- weather: 2 updates X day for 285 areas
- events: about 60 new events X day
- Wi-Fi: > 350.000 measures X day
- mobiles: > 50.000 measures X day
- more than 35.000 distinct users X day
- From 600.000 to 4.5 M Tweets X day
-many other sensors see next slide

- Nascondi Menu

Servizi Regolari Servizi Trasversali

search text into service

Categorie Servizi

- De/Select All
- Accommodation +
- Advertising +
- AgricultureAndLivestock +
- CivilAndEdilEngineering +
- CulturalActivity +
- EducationAndResearch +
- Emergency +
- Entertainment +
- Environment +
- FinancialService +
- GovernmentOffice +
- HealthCare +
- IndustryAndManufacturing +
- MiningAndQuarrying +
- ShoppingAndService +
- TourismService +
- TransferServiceAndRenting +
- UtilitiesAndSupply +
- Wholesale +
- WineAndFood +

I. risultati: Nessun Limite

raggio ricerca 100 metri

Risultati della ricerca

più di 4000 risultati, attivato clustering

Services 16858



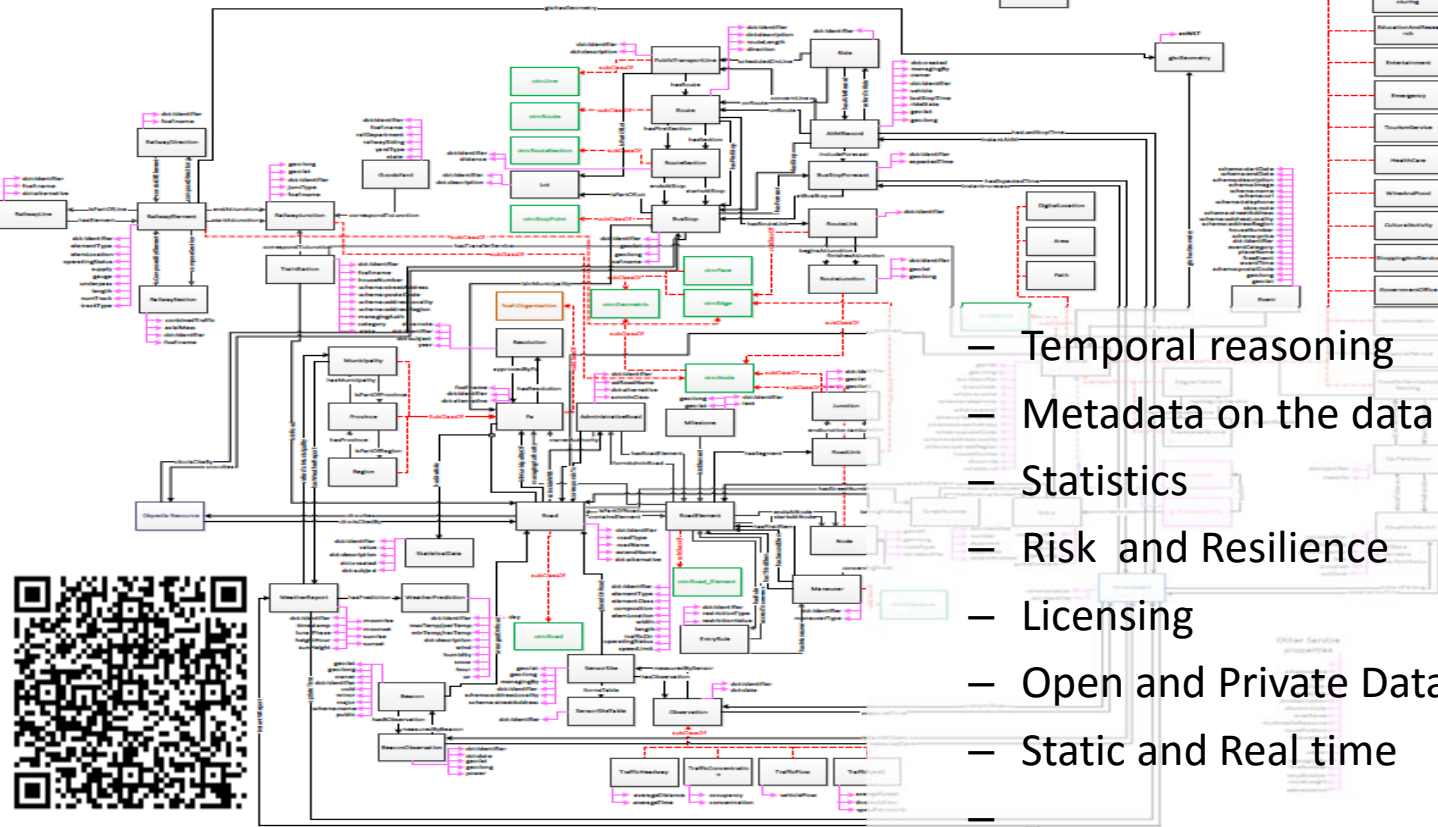
Km4City Ontology – LOD, RDF Store



- >84 Classes
- >100 ObjectProperties
- >100 DataProperties

- different aspects:
 - Street-Guide
 - Mobility and transport
 - Points of interest
 - Sensors, IOT, ..
 - Energy
 - Administration
 - Citations from strings
 - ..

- Temporal reasoning
- Metadata on the data
- Statistics
- Risk and Resilience
- Licensing
- Open and Private Data
- Static and Real time
- ..



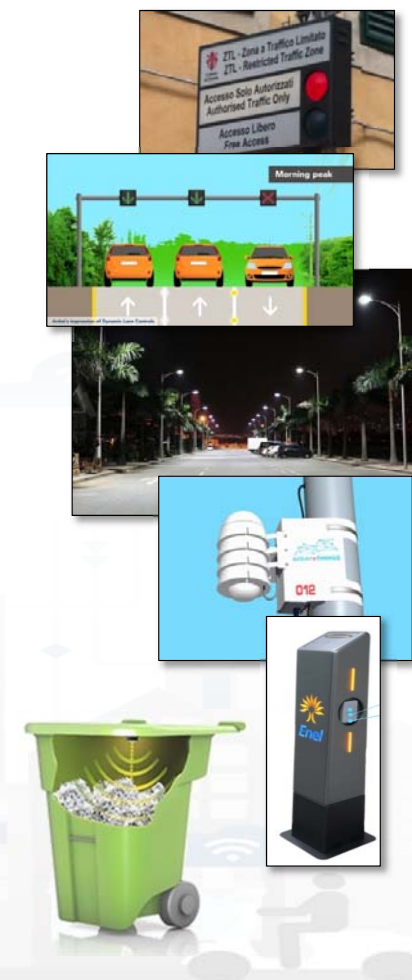
Ontology Documentation:
<http://www.disit.org/6506>
<http://www.disit.org/6507>
<http://www.disit.org/5606>
<http://www.disit.org/6461>



Addition of Sensors and Actuators, IOT

- Restricted Traffic Zone Gates
 - Passages, payment, alerts, Wi-Fi control, RFI control, etc.
- Road Direction manager: panel, red-light, etc.
 - Status and action
- Environmental Sensors:
 - Air quality, pollution, rain, allergens, temperature,
 - humidity,...
- Public Light Pillar
 - Traffic flows, environment,
 - Wi-Fi, Tv-Camera, BT servers, on/off, percentage of light, ..
- Waste Manager
 - Level, kind, status, on/off

- **IOT**
 - **Smart light**
 - **Smart Waste**
 - **Smart bench**
- **Energy:**
 - **Recharge Stations**
 - **Home meters**
 - **Energy storage**
-





Transport systems
Mobility, parking



Public Services
Govern, events,



Sensors, IOT
Cameras, ..



Environment,
Water, energy



Shops, services,
operators



Social Media
WiFi, network

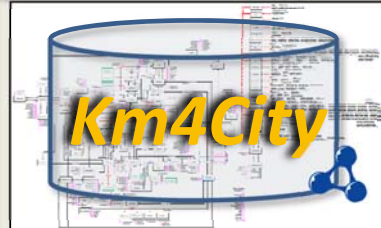


Static, slow and Real Time data flows

DISCES -- Distributed and parallel architecture on Cloud



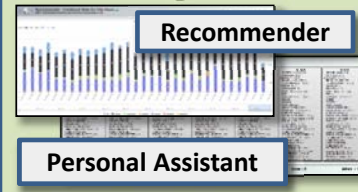
Km4City Smart City Engine



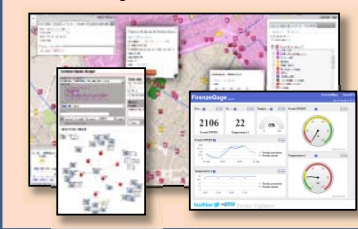
Big Data Analytics



Smartening Tools



Development Tools



Km4City Smart City API

Tools for City Operators and Decision Makers

Smart City Dashboard

Smart Decision Support

[Http://dashboard.km4city.org/](http://dashboard.km4city.org/)

[Http://Smartds.km4city.org](http://Smartds.km4city.org)

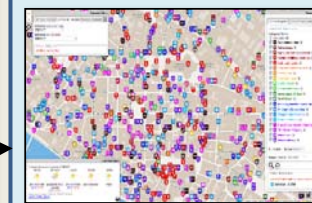


ServiceMap browser

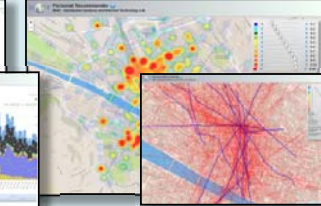
[Http://servicemap.km4city.org](http://servicemap.km4city.org)

Twitter Vigilance

[Http://www.disit.org/tv](http://www.disit.org/tv)



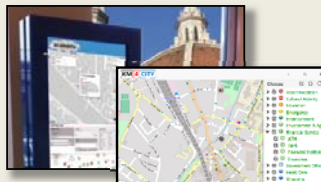
Analyzers of City User Behavior



Tools for Final Users

Mobile e Web Apps

[Http://www.km4city.org/webapp](http://www.km4city.org/webapp)



[Http://www.km4city.org](http://www.km4city.org)

[Http://www.km4city.org/app](http://www.km4city.org/app)



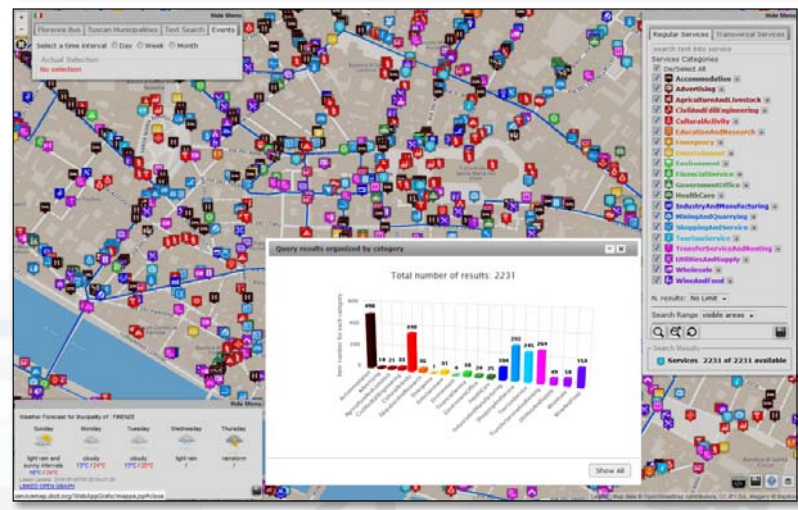
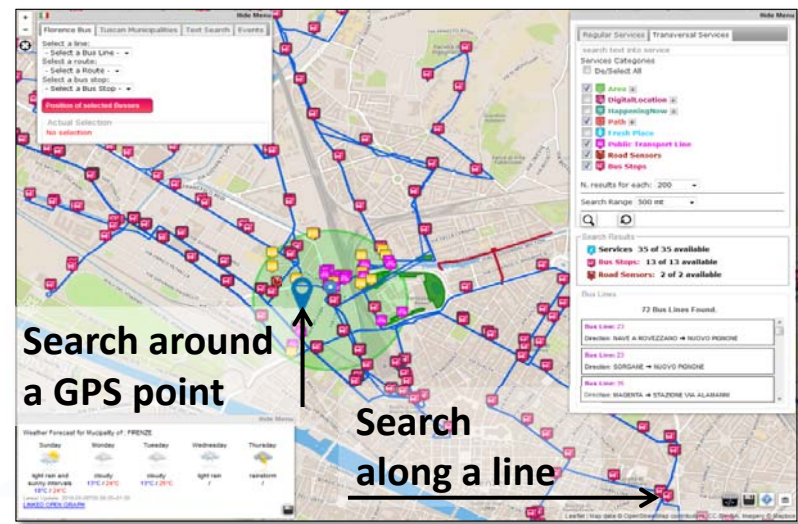


UNIVERSITÀ
DEGLI STUDI
FIRENZE

DINFO
DIPARTIMENTO DI
INGEGNERIA
DELL'INFORMAZIONE

DISIT
DISTRIBUTED SYSTEMS
AND INTERNET
TECHNOLOGIES LAB
<http://www.disit.org>

ServiceMap



Smart City API call generation

Web App HTML5

Giardino Di Boboli

Tip: Digital Location

Descrizione: The Prince's way ends in the Giardino di Boboli, near the Grotta del Buontalenti, that is a very masterpiece of the Mannerist architecture and sculpture

Descrizione: Il Percorso del Principe termina nel Giardino di Boboli, nei pressi della Grotta del Buontalenti, vero e proprio capolavoro dell'architettura e della scultura manierista

DISPONIBILE SU Google play

Scarica da App Store

Scarica da Windows Store

<http://www.disit.org/6873>

Embed into Web pages



Stand: F680



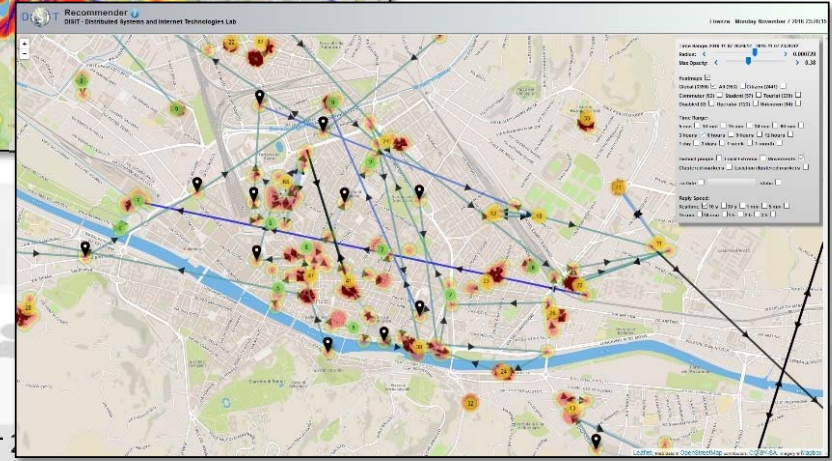
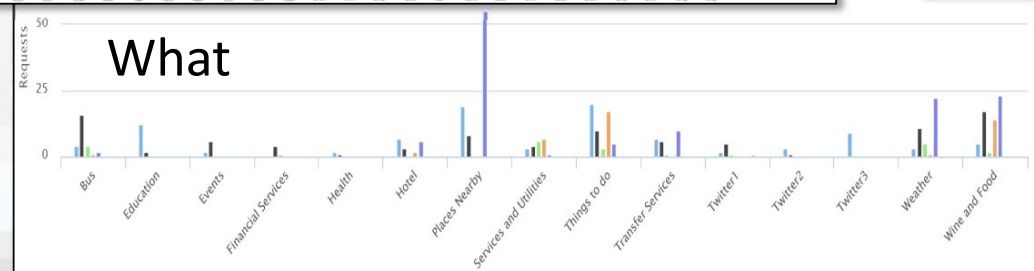
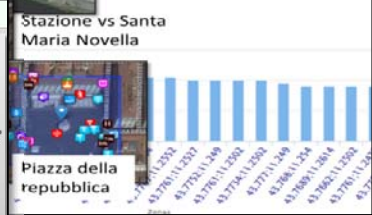
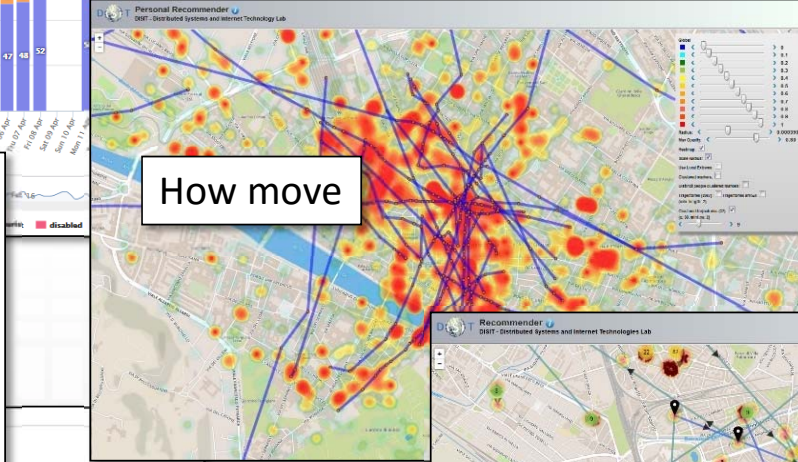
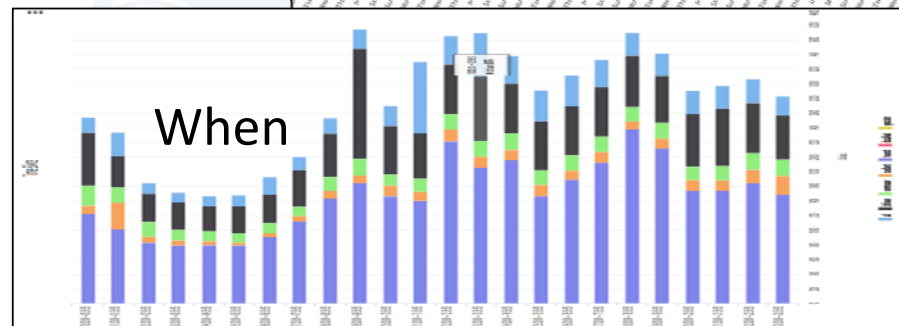
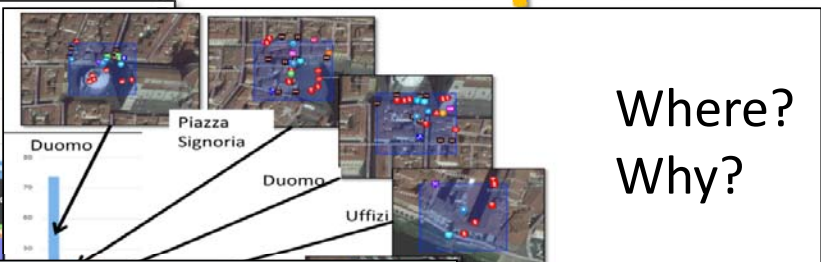
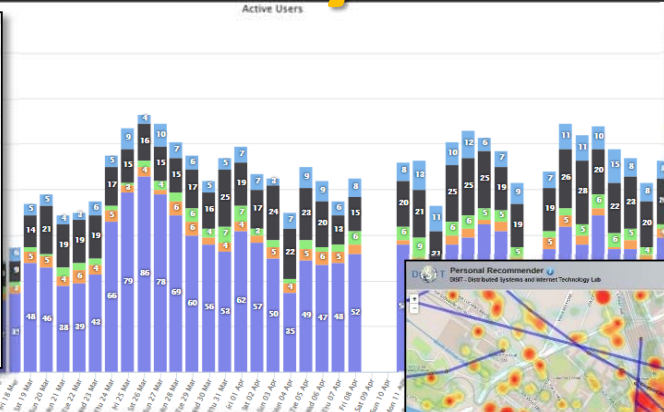
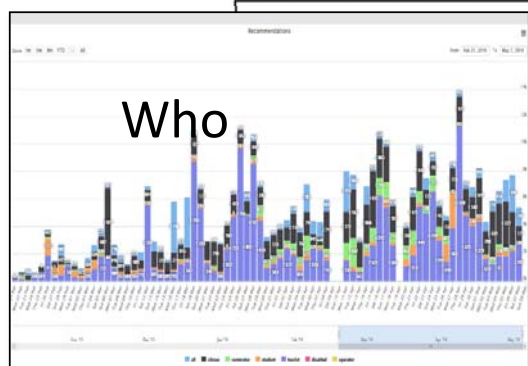
UNIVERSITÀ
DEGLI STUDI
FIRENZE

DINFO
DIPARTIMENTO DI
INGEGNERIA
DELL'INFORMAZIONE

DISIT
DISTRIBUTED SYSTEMS
AND INTERNET
TECHNOLOGIES LAB
<http://www.disit.org>



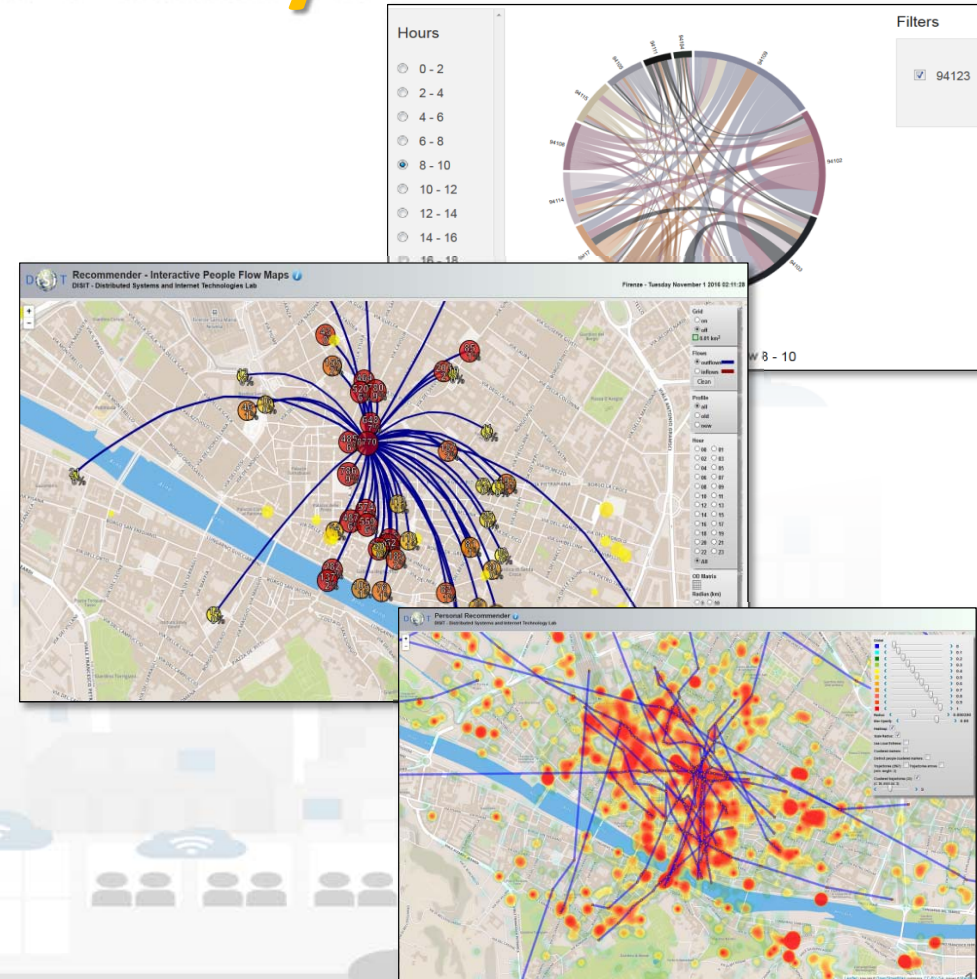
User Behavior Analyzer for Collective profiling





User Behaviour Analysis

- Monitoring movements by
 - traffic flow sensors
 - Spires and virtual spires
- Monitoring users' movements
 - from Mobile Cells
 - Unsuitable for precise tracking and OD production
- Monitoring movements via Wi-Fi
- Monitoring movements and much more from mobile Apps

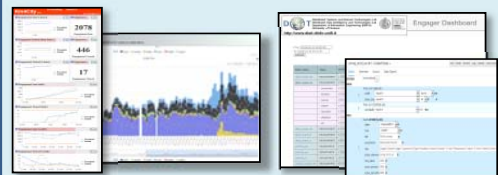


User influencing, engaging, monitoring & Follow Up

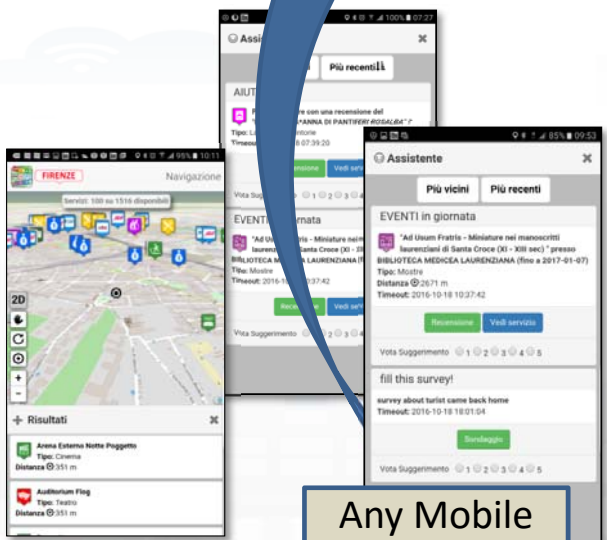
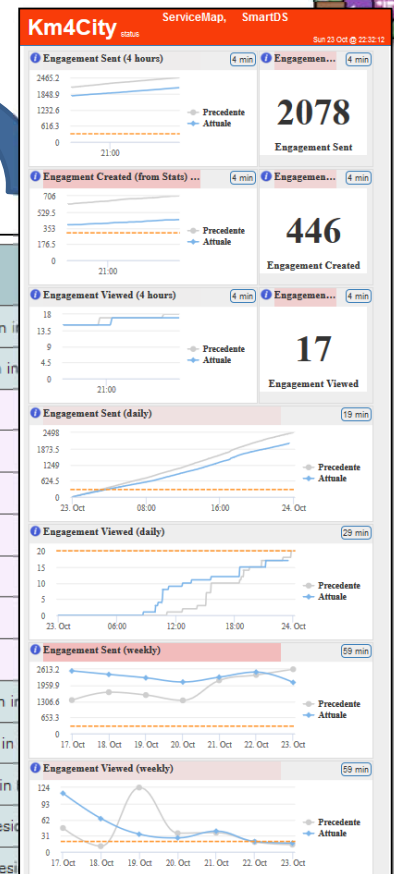


City Operators

Strategy Editor Engager



Rule name	Type	#sent	#viewed	#viewed on #sent	Description
daily_event_de	ENGAGEMENT	1 (0%)	0 (0%)	0%	Suggest (in german) an event currently on in
daily_event_en	ENGAGEMENT	1720 (2.12%)	70 (7.1%)	4.07%	Suggest (in english) an event currently on in
- commuter		5 (0.29%)	0 (0%)	0 (0%)	
- student		14 (0.81%)	0 (0%)	0 (0%)	
- tourist		1462 (85%)	25 (35.71%)	25 (1.71%)	
- citizen		113 (6.57%)	39 (55.71%)	39 (34.51%)	
- operator		0 (0%)	0 (0%)	0 (0%)	
- disabled		0 (0%)	0 (0%)	0 (0%)	
- all		119 (6.92%)	6 (8.57%)	6 (5.04%)	
daily_event_es	ENGAGEMENT	6 (0.01%)	4 (0.41%)	66.67%	Suggest (in spanish) an event currently on in
daily_event_fr	ENGAGEMENT	6 (0.01%)	0 (0%)	0%	Suggest (in french) an event currently on in
daily_event_it	ENGAGEMENT	5459 (6.73%)	296 (30.02%)	5.42%	Suggest (in italian) an event currently on in
parking_en	ASSISTANCE	141 (0.17%)	128 (12.98%)	90.78%	Alert (in english) if the user parked in a resi
parking_es	ASSISTANCE	3 (0%)	3 (0.3%)	100%	Alert (in spanish) if the user parked in a resi
parking_it	ASSISTANCE	187 (0.23%)	1 (0.1%)		
shoot_a_photo_de	ENGAGEMENT	68 (0.08%)	1 (0.1%)		



Any Mobile and Web App

Inform Engage Stimulate / recommend

Integrated Infrastructure for UP in Florence, SCEWC 2016



UNIVERSITÀ
DEGLI STUDI
FIRENZE

DINFO
DIPARTIMENTO DI
INGEGNERIA
DELL'INFORMAZIONE

DISIT
DISTRIBUTED SYSTEMS
AND INTERNET
TECHNOLOGIES LAB
<http://www.disit.org>

Smart City Dashboard



Firenze

43 7893, 11 2560

ServiceMap, SmartDS

Tue 4 Oct @ 12:09:44

WiFi operativi 100%

SmartDS: via Santa Marta 3 **30.9%**

0 Bus attivi

100% Parcheggi liberi

0% Memoria in uso

88.9% Stato linee ATAF

31.9% in Orario in Anticipo in Ritardo

Informazioni disponibili

Numero di processi lanciati: 2627

CPU in uso: 0%

Memoria in uso: 24.2%

Smart City Engine

CPU Totale: 0%

Mem Totale: 72094 MB

Job Eseguiti: 2673

Previsional meteo: FIRENZE

Twitter Trends/citazioni

Principali Twitter Trends: #fiorenza, #fiorentina #uffizi

Citazioni: @NicolodiDaria, @acfiorentina @commefi

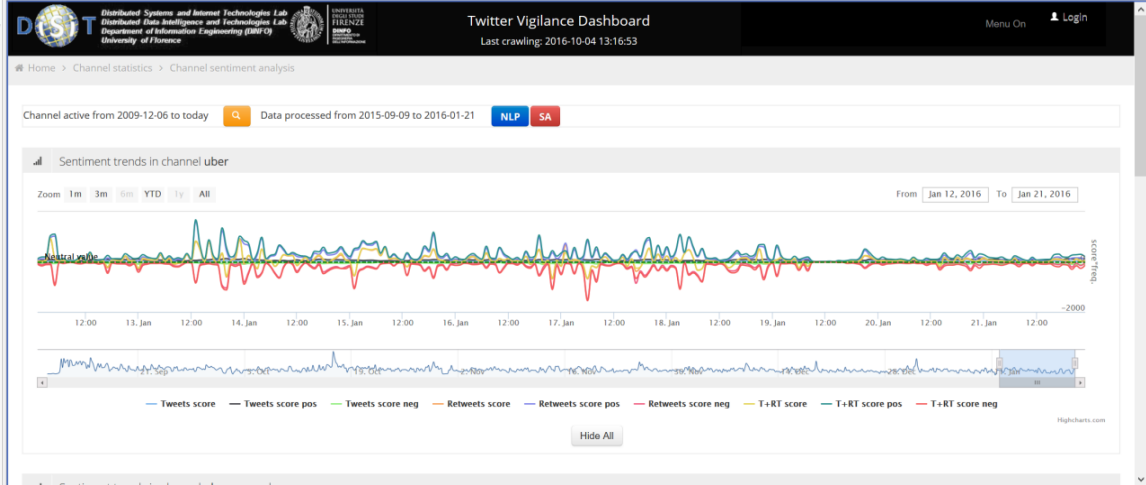
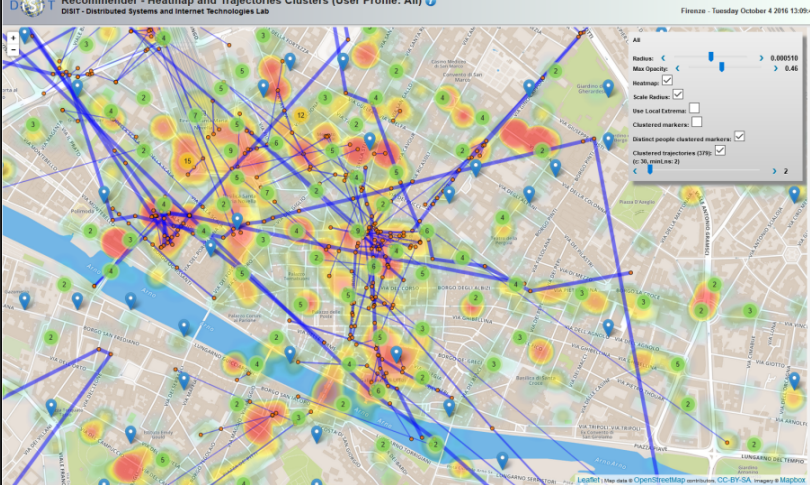
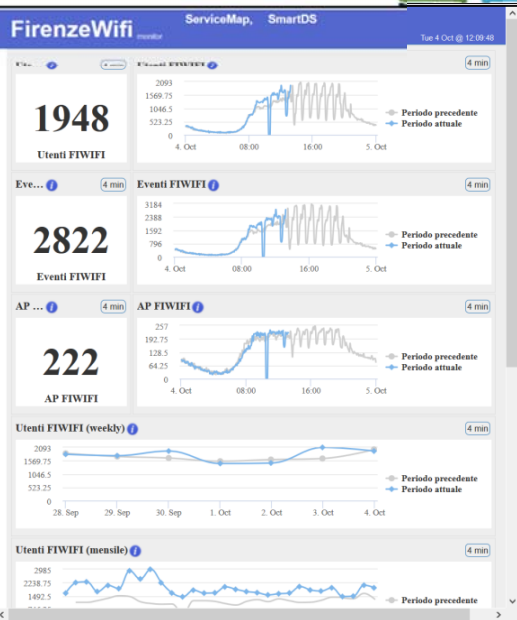
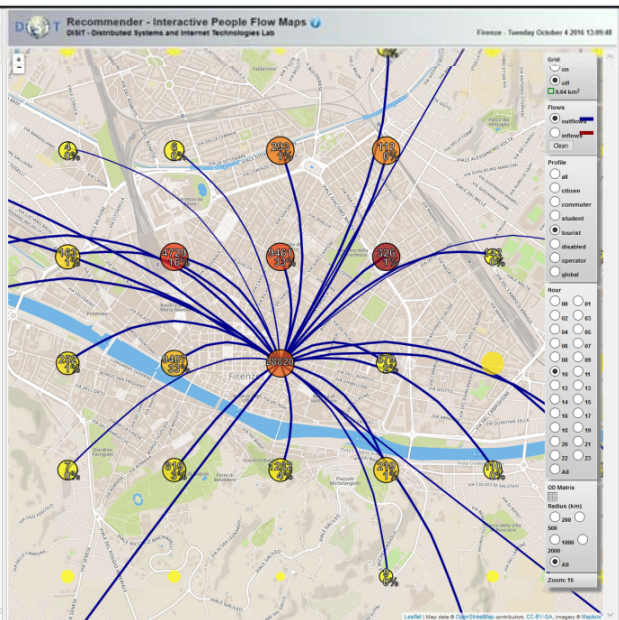
Query ServiceMap

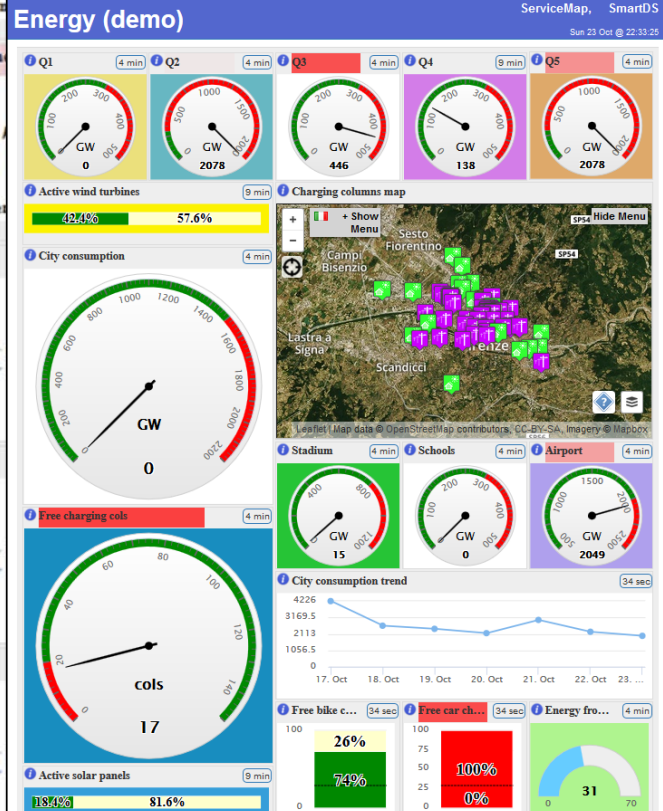
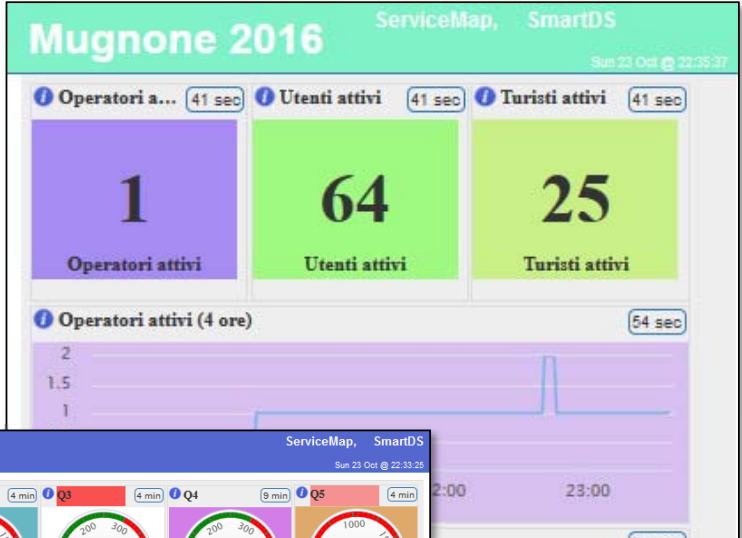
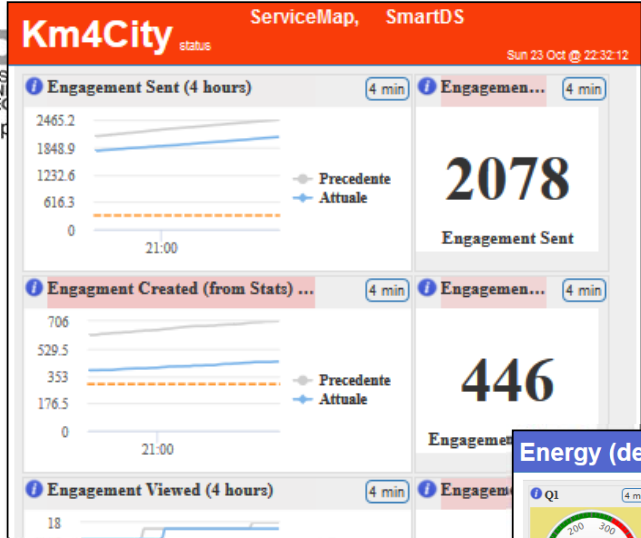
Query KinCity API

Real time position ATAF bus

Elenco eventi del giorno

Twitter Vigilance





twitter re[tweet] Twitter Viulnce





UNIVERSITÀ
DEGLI STUDI
FIRENZE

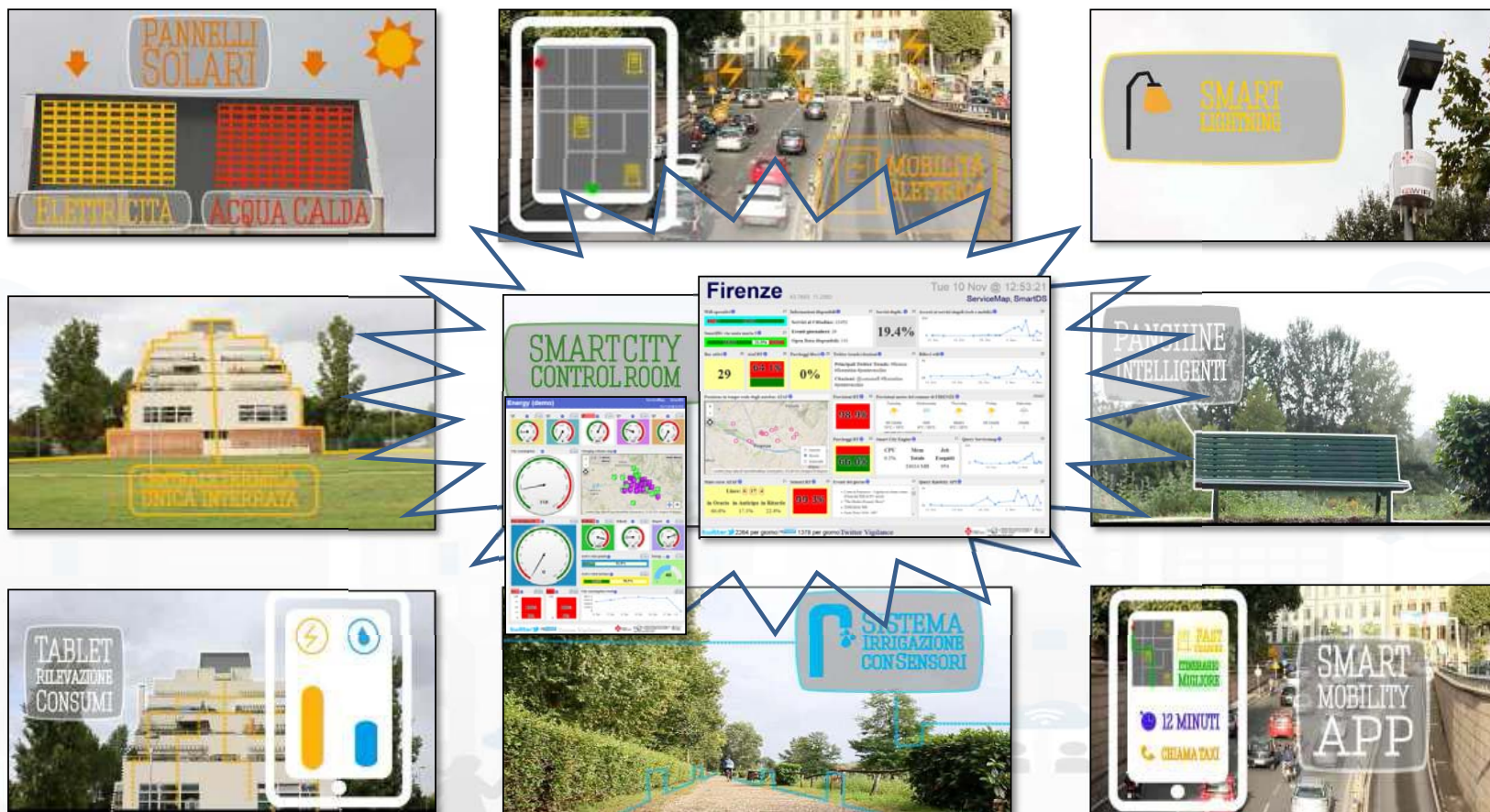
DINFO
DIPARTIMENTO DI
INGEGNERIA
DELL'INFORMAZIONE

DISIT
DISTRIBUTED SYSTEMS
AND INTERNET
TECHNOLOGIES LAB
<http://www.disit.org>



Horizon 2020
European Union Funding
for Research & Innovation

REPLICATE in Firenze: Energy, ICT & Mobility



Integrated Infrastructure for UP in Florence, SCEWC 2016

www.Km4City.org



UNIVERSITÀ
DEGLI STUDI
FIRENZE

DINFO
DIPARTIMENTO DI
INGEGNERIA
DELL'INFORMAZIONE

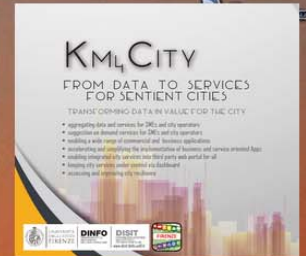
DISIT
DISTRIBUTED SYSTEMS
AND INTERNET
TECHNOLOGIES LAB



GET IT ON
Google play

Download on the
App Store

Download from
Windows Phone Store



Home Sentient City Control Room City Users' Tools Back Office and Dev Tools Info and Docs



City Users' Tools for Mobile Devices and Web

FIRENZE, Where, What

Km4City Mobile App Video

Suggestions and recommendations (*)

Engagements

Web and Totem Km4City Apps (*)

smart city expo
WORLD CONGRESS

Stand: F680