



EUROPEAN COLLECTED LIBRARY OF ARTISTIC PERFORMANCE

www.ECLAP.eu

Grant Agreement No 250481

DE7.5 ECLAP Project Show Case White Paper

Version: 1.2

Date: 31/05/2013

Project Title: ECLAP
Project Number: ICT-PSP-250481
Deliverable Number: DE7.5
Accessibility: public
Work-Package contributing to the Deliverable: WP7
Nature of the Deliverable: report and video
Status: final

Document responsible: Paolo Nesi
Email address: paolo.nesi@unifi.it
Affiliation acronym: UNIFI DISIT

Authors:

- Paolo Nesi, UNIFI, DISIT, DINFO
- Irene Scaturro, UNIROMA
- Michela Paolucci, UNIFI, DISIT, DINFO
- Pierfrancesco Bellini, UNIFI, DISIT, DINFO
- Ivan Bruno, UNIFI, DISIT, DINFO
- Daniele Cenni, UNIFI, DISIT, DINFO
- Marco Serena, UNIFI, DISIT, DINFO

Statement of originality:

This deliverable contains original unpublished work except where clearly indicated otherwise. Acknowledgement of previously published material and of the work of others has been made through appropriate citation, quotation or both.

Catalogue:

Title	ECLAP Project Show Case
Identifier.de	DE7.5
Identifier.ISBN	
Creators	Paolo Nesi, Irene Scaturro, Michela Paolucci, Pierfrancesco Bellini, Ivan Bruno, Daniele Cenni, Marco Serena
Subject	ECLAP overview and show case
Description	
Keywords	ECLAP, performing arts, best practice network, semantic computing, digital library, overview, Europeana, aggregators, content aggregation tools, automated content management.
Publisher	ECLAP
Date	31/05/2013
Format	Document
Type	PDF or DOC
Language	EN

Citation Guidelines

Author(s) name Surname, Deliverable number, Deliverable title, ECLAP Project, DD/MM/YY, URL: univocally determined on <http://www.eclap.eu>

ECLAP Copyright Notice

- this document is Public, it is available under the Creative Commons license: Attribution-NonCommercial-NoDerivs 3.0 Unported. This license permits non-commercial sharing and remixing of this work, so long as attribution is given.

For more information on this license, you can visit , <http://creativecommons.org/licenses/by-nc-nd/3.0/>



Please note that:

- You can become affiliated with ECLAP. This will give you access to a great amount of knowledge, information related to ECLAP services, content and tools. If you are interested please contact ECLAP coordinator Paolo Nesi at info@eclap.eu. Once affiliated with ECLAP you will have the possibility of using the ECLAP for your organisation.
- You can contribute to the improvement of ECLAP by sending your contribution to ECLAP coordinator Paolo Nesi at info@eclap.eu
- You can attend ECLAP meetings that are open to public, for additional information see www.eclap.eu or contact ECLAP coordinator Paolo Nesi at info@eclap.eu

Table of Contents

1	EXECUTIVE SUMMARY AND REPORT SCOPE	4
2	INTRODUCTION.....	6
3	ECLAP OVERVIEW	8
3.1	MANAGING CONTENT.....	10
4	ECLAP CONTENT OVERVIEW.....	12
5	CONTENT AGGREGATION TOOLS	13
6	MOBILE CONTENT ORGANIZER.....	15
7	ECLAP ADDED VALUE COLLABORATIVE AND SOCIAL TOOLS	15
8	ADMINISTRATION AND MONITORING TOOLS.....	16
9	CONCLUSIONS	17
10	BIBLIOGRAPHY	17

1 Executive Summary and Report Scope

The evolution of semantic technology and related impact on internet services and solutions, such as social media, mobile technologies, etc., have determined a strong evolution in digital content services. Traditional content based online services are leaving the space to a new generation of solutions. The needs of more sophisticated content services is becoming more concrete, pretending from the content and user services new social and semantic features with collaborative tools, aggregations tools, linked data, connection with social networks and mobile devices, augmented reality, navigation tools, etc.

In this document, the experience of a new generation digital content service is presented, namely ECLAP (European Collected Library of Artistic Performance, <http://www.eclap.eu>). It has been partially founded by the European Commission as part of the Competitive-ness and Innovation Framework Programme, Theme CIP-ICT-PSP.2009.2.2, Grant Agreement N°250481 and includes/aggregates more than 35 international institutions. ECLAP provides services and tools for content management and user networking. The main goal of ECLAP is the content aggregation and metadata semantic enrichment for Europeana <http://www.europeana.eu>. Europeana <http://www.europeana.eu> collects cultural heritage metadata coming from several aggregators (as ECLAP), institutions, universities, foundations, museums, schools of art, that represent the European cultural heritage. ECLAP performs cultural enrichment and promotion of European culture, and provides support for relevant improvements in learning and research in the field of performing arts. At the same time, ECLAP is a live lab in which several new technologies and solutions in the area of semantic computing and social media have been developed and put under trial of the final users and institutions. On this regard, ECLAP is open for both content and results experimentations, and presently comprises more than 35 prestigious international institutions; 18 of them started since ECLAP early set up in the 2010, others joined ECLAP successively as affiliated and networking partners of ECLAP. They are based on a set of newly researched technologies and features in the area of semantic computing technologies capable of mining and establishing relationships among content elements, concepts and users. On this regard, ECLAP is a place in which these new solutions are made available for interested institutions.

As Best Practice Network, ECLAP consists of a number of working groups that analyse the state of the art and identify the best practices for the creation of guidelines to cope with technical and strategic problems of the sector. Presently, ECLAP distributes more than 120000 distinct objects, up to 13 major metadata languages, towards a community of about 2200 registered users, world-wide distributed, while the largest communities of users and connections come from Italy, UK, USA, France, The Netherlands, Portugal and Slovenia. ECLAP provides services and tools for automated content ingestion, adaptation, metadata ingestion and editing, semantic information extraction, indexing and distribution by exploiting the most innovative and consolidated technologies. ECLAP supports the institutions in all their activities: metadata selection and mapping, content ingestion, to the definition and management of permissions and licenses on contents, and finally managing their users on ECLAP services. According to ECLAP workflow, the obtained metadata are sent to Europeana only after that the metadata have been enriched and linked to a reachable digital resource and when the IPR details have been finalized, with needed quality level. An ECLAP IPR Model can be associated with each single content or collection. The IPR model has been derived from the work performed on MPEG-21. The ECLAP content management performs a wide range of metadata enrichment activities. Among typical metadata enrichments performed by ECLAP we can see the addition of technical descriptors of source files, the addition of more languages, the geo localization passing from location named into metadata and descriptors to formal GPS position, the production of QR codes for museum inspection and linkage (see it as augmented reality first step), the content aggregation, the addition of comments and tags, the association of taxonomical classification, the establishing of connections with dbPedia open data, the addition of a formal IPR license descriptor, the association of univocal date and time, the association of an UUID (permitting the management of any kind of identifiers that may be available for the single content element such as: ISBN, ISAN, ISMN, private coding IDs, etc.), the production of LOD model, the content aggregations, etc. ECLAP publishes content metadata and descriptors to Europeana and as Linked Open Data is very simple for the institutions since the content can be automatically ingested in several different manners, processed and automatically adapted for format, metadata and IPR, to arrive to be

published as full content information on ECLAP service portal, while a subset of the metadata are provided to Europeana according to the EDM, Europeana Data Model.

ECLAP also provides infrastructural connection for direct promotion of content towards a large number of social networks, including: Facebook, LinkedIn, Digg, Twitter, etc. On ECLAP, each content provider may have its own distribution channel/group (including a forum and a blog in addition to the space for their content collections, and the groups can be open, moderated or private) with the possibility of customizing the group user interface according to their logo and colours. This multitenant modality permits at the institutions to see ECLAP as a non-intrusive service, to reinforce their brand and at the same time to exploit and experiment a number of innovative ECLAP tools, to accelerate the promotion exploiting ECLAP social media, LOD and Europeana channels, and ready to access new users for their content.

ECLAP enriches Europeana through a variety of performing-arts resources of relevant cultural value. Users can access records pertaining to classes, rehearsals and performances of the great masters of theatre, dance and music of the 20th century, but also to the great masterpieces of oral tradition. Most of the 120 thousands items provided were not previously accessible through Internet, resources include video and audio recordings, texts, images, animations, playlists, collections, annotations, 3D objects, Braille scores, e-books, cross media interactive content and serious games. In particular, ECLAP provides the unique videos, images and texts related to more than 50 years of activity of the Dario Fo and Franca Rame theatre company, featuring [videos](#), [photos](#), [texts](#), [drawings](#), paintings, [sketches](#), [posters](#), copies of contracts and of invoices, [notes](#), books, [articles](#). Other unique, irreplaceable material includes video, audio recordings and photos of performances, workshops, seminars, rehearsals of [Jerzy Grotowski](#), [Peter Brook](#), [Gennadi Bogdanov](#), [Anatolij Vasil'ev](#), [Alberto Sordi](#), [Carmelo Bene](#), [Giorgio Strehler](#), [Mimmo Cuticchio](#), [Gian Maria Volonté](#), [Judith Malina](#). Once of the most interesting features of ECLAP consists in the possibility of creating content aggregations. Content aggregations can be: playlists, collections, e-learning courses, annotations, and audiovisual synchronizations. The content access from mobile devices is presently a facility that is given for granted by many institutions. Most of the present smartphones and tablets are capable to access at complex web pages to play video and open large documents. On the other hand, in order to use these devices for educational and professional usages several other features have to be available. To this end, in ECLAP the Content Organizer mobile application has been developed. The Content Organizer allows at the final users to get access content from multiple cultural heritage portals according to the IPR models, saving the registration and authentication credentials.

ECLAP, the best practice network and the service portal have the potentials to continue at providing the services for a longer time. In terms of services for the final users, ECLAP is providing a set of added value tools and services that motivate the institutions and final users to continue stay the usage of ECLAP.

- **Networking** and connections with colleagues, working groups, blogs, forums, mailing lists, etc.
- **User recommendations** and suggestions, connection with social networks, etc.
- **Content management**, publication and promotion, automated production, IPR management, etc.
- **Content aggregation tools**, playlists, collections, courses and annotations, ..
- **Search facilities**, indexing, advanced features and faceted results on all the extended multilingual metadata, technical metadata,
- **Social Graph tool** allows seeing, explore, play and browse the relationships among users and content.

ECLAP has been validated and its services optimized. The analysis taken into account all the activities of ECLAP on content. A huge activity on content and metadata aggregation, analysis and validation to match the Europeana requirements has been automated and performed by the back-office. Regarding the front office side, the most used tools by content providers have been associated with IPR, namely IPR Wizard and the Content Management since they allowed users to finalise the rights and to provide a connection of the content versus Europeana. Most of the metadata provided were already in a good shape and less than the 1% of content has been corrected, including translation, etc. On the other hand, the IPR details requested by Europeana constrained the content provider to associate to the 100% of the content a new IPR model. This

huge effort has been kept under control by exploiting the IPR Model, and applying only 67 IPR Models to the whole set of more than 120.000 different content coming from more than 35 different collections and institutions.

The ECLAP service is presently used by a 35 institutions and it is maintained alive by a short number of partners including the coordinator.

This document is part of the ECLAP show case, which includes:

- This document: Deliverable DE7.5, in PDF accessible on <http://www.eclap.eu/drupal/?q=node/135868>
- A set of flyers and posters: see <http://www.eclap.eu/drupal/?q=node/3759>
- A list of references to more details see Support Page: <http://www.eclap.eu/drupal/?q=node/3609>
- [ECLAP promotional film](http://www.eclap.eu/drupal/?q=home&axoid=urn%3Aaxmedis%3A00000%3Aobj%3A54a51560-0d37-40fc-a219-b37dad01322c)
<http://www.eclap.eu/drupal/?q=home&axoid=urn%3Aaxmedis%3A00000%3Aobj%3A54a51560-0d37-40fc-a219-b37dad01322c> .
- ECLAP Conference proceedings and programme with content (video, slides, papers) for [ECLAP 2012](http://www.eclap.eu/drupal/?q=node/96024)
<http://www.eclap.eu/drupal/?q=node/96024> and [ECLAP 2013](http://www.eclap.eu/drupal/?q=node/113971)
<http://www.eclap.eu/drupal/?q=node/113971>

2 Introduction

Traditional library services in which the users can access to content by searching and browsing on-line catalogues obtaining lists of references and sporadically digital items (documents, images, etc.) are part of our history. With the introduction of web2.0/3.0, and thus of data mining and semantic computing, including social media and mobile technologies most of the digital libraries and museum services became rapidly obsolete and were constrained to rapidly change. A tremendous push on renovation has been directly driven from the young users that expect to find in accessing and using cultural heritage and educational services (such as, digital libraries, museum, and educational portals and tools) the same mechanisms and dynamisms they are used to find in games and social networks. In fact, it is quite common to see teenagers sharing discussion groups on school aspects on Facebook with their teachers, and/or to get from professors demonstrators about experiments as links to play videos from YouTube portal. On the facts, at the present, we are in the phase in which the most famous cultural institutions have partially adequated their services and offers to exploit the new technologies and opportunities, e.g., getting visibility on the major social networks. For example, on top positions in terms of Facebook likes and/or Twitter followers we have: MoMA, Metropolitan Museum, Musée du Louvre, British Library, Guggenheim Museum, Centre Pompidou, British Museum, Getty Museum, Los Angeles, Smithsonian Institution, etc.

In most cases, these institutions use social media solutions as promotional channels rather than taking the opportunity of exploiting the semantic computing innovations to provide new services and tools for their customers, for example to increase the user engagement.

The last step would imply to dominate a higher level of technology awareness and it is much more complex to be conquered, in terms of both acceptance and investments. Success cases include: museums that have included interactive installations, mobile tools with augmented reality for supporting the visits, interactive content for mobile devices, the exploitation of geolocalized information, etc. Thus addressing different phases in which the user interact with the digital content in virtual and physical scenarios; before, during and after the visits in the museum.

A faster and more complex evolution is observed for digital libraries and archives; which are cultural institutions in which the final experience start and finish on internet, rather than physical such as in the museums. Recently, new ways of fruition of cultural heritage digital content on the web have been proposed in which both content and users find their reciprocal relevance, and advances in establishing/creating stable relationships. The attention of professional users is focused on content oriented web sites, and in most of them several forms of content aggregation are offered. Several web portals and social services are growing as portals/engines, for example, collecting content metadata of articles, video, etc., indexing citations; thus, indexing cultural heritage metadata. Those portals and services are facilitators for the content identification,

and the real content files/items, the digital essences, are only referred from the metadata; real files are only accessible from the original portal (web site, archive) of the content provider. This happens for many digital libraries, such as Europeana and partially for ACM, PubMed and IEEE and the other portals of publishers. In most cases, the cultural institutions see their content ingested, promoted, distributed and exploited by final users via online commercial partners (e.g., Google, amazon, YouTube), that may take benefits to commercial resell and/or via advertising. Most of these services are extremely general purpose and gradually exploit semantic computing technologies taking into account user profiling and providing suggestions and recommendations, also reselling ads spaces in web pages. In most cases, the benefits obtained by final users in exploiting the social networks services have motivated the users to use largely them, also as early solutions for professional usage: for example for content based service promotion, sharing content with students, distribution and discussion channel, etc.

Recently, professional users are unsatisfied by those general purpose social media solutions since they do not provide satisfactory facilities to perform advanced semantic aggregations and associations, learning management, that are, in effect, needed for educational and professional purposes. This new trend has determined the creation of a number of more specific and tuned services that in the case of digital library for arts can be identified as: Artyčok: <http://www.artycok.tv>, Digital Theatre: <http://www.digitaltheatre.com>, Digital Dance Archives: <http://www.dance-archives.ac.uk>, SP-ARK: <http://www.sp-ark.org>, etc. The needs of more sophisticated content services is becoming more concrete, pretending from the content and user services new social and semantic features with collaborative tools, aggregations tools, linked data, connection with social networks and mobile devices, augmented reality, navigation tools, etc.

In this report, and overview of ECLAP (European Collected Library of Artistic Performance, <http://www.eclap.eu>) is presented. ECLAP has been set up as co-funded by the European Commission ICT Policy Support Programme as part of the Competitive-ness and Innovation Framework Programme, Theme CIP-ICT-PSP.2009.2.2, Grant Agreement N°250481. The main goal of ECLAP is the content aggregation and metadata semantic enrichment for Europeana. Europeana <http://www.europeana.eu> collects cultural heritage metadata coming from several aggregators (as ECLAP), institutions, universities, foundations, museums, schools of art, that represent the European cultural heritage. Europeana foundation and portal do not collect content items files, but only classification information (i.e., metadata), including the original URLs to the content. These URLs refer to the original content owner and/or to the content aggregator. Europeana is recently changing its direction with Europeana Creative and Europeana Cloud collecting and providing the real content and managing the IPR. We think that ECLAP contributed to the simulation of Europeana to go in that direction in addressing the files and managing the IPR. Those solutions are native in ECLAP since the beginning, while they will be available in Europeana probably in late 2014.

According to this, ECLAP performs cultural enrichment and promotion of European culture, and provides support for relevant improvements in learning and research in the field of performing arts. At the same time, ECLAP is a live lab in which several new technologies and solutions in the area of semantic computing and social media have been developed and put under trial of the final users and institutions. On this regard, ECLAP is open for both content and results experimentations, and presently comprises more than 35 prestigious international institutions; 18 of them started since ECLAP early set up in the 2010, others joined ECLAP successively as affiliated and

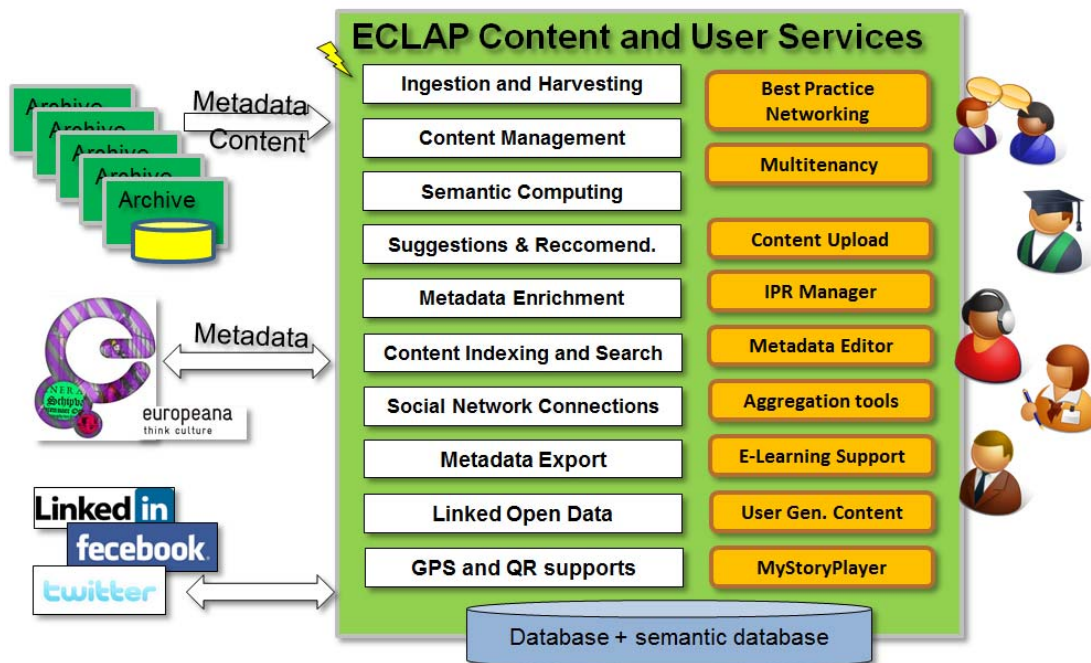


networking partners of ECLAP. They are representative of many different cultures and countries of the world such as: University of Florence, Dario Fo & Franca Rame Archive, University of Rome La Sapienza, Liber Liber, Fondazione Fabbrica Europa, Italy; Beeld en Geluid (Sound & Vision), University of Amsterdam, The Netherlands; Escola Superior de Música e das Artes do Espectáculo do Porto, Portugal; Festival International de Films de Femmes de Créteil, France; The Institute of Polish Culture University of Warsaw, Grotowski Institute, Poland; Museu de les Arts Escèniques Institut del Teatre de Barcelona, Universidad de Castilla La Mancha, Spain; La Bellone House of Performing Arts, Belgium; MUZEUM of Ljubljana, Slovenia; Hungarian Theatre Institute, Hungary; Museum of Archaeology & Anthropology, University of Cambridge, University of Glasgow, Coventry University, UK; Spain; Festival Cielos del Infinito, Chili; University of South Africa, South Africa; Department of Information Systems for Arts and Humanities, Russia.

For details about the ECLAP project and deliverables see: <http://www.eclap.eu/drupal/?q=node/3609>.

3 ECLAP Overview

ECLAP offers a wide support to cultural institutions on performing arts in moving towards the direct exploitation of new technologies for digital content management for different purposes that range from direct: dissemination, promotion towards Europeana, open data, social media, education and training, to the better understanding of new technologies and solutions. To this end, ECLAP is both a Best Practice Network and provider of Content and User Services.



ECLAP Services: back end and front end.

As **Best Practice Network** (<http://www.eclap.eu/drupal/?q=node/3502>), ECLAP consists of a number of working groups that analyse the state of the art and identify the best practices for the creation of guidelines to cope with technical and strategic problems of the sector. To this end, three main ECLAP Working Groups (with corresponding blogs and forums) have been set up to cover the areas of:

- digital libraries and models for performing arts content [Bellini and Maratea, 2012],
- intellectual property management and tools [DenHeuvel and Baltussen, 2012], and
- digital content based tools for teaching and learning of performing arts in the new era [Eversmann, Lint and Schuurman, 2012].

DE7.5 – ECLAP Project Show Case
Best Practice Network

Other Working Groups have been and can be activated on ECLAP to cope with other topics. The ECLAP networking activity is grounded on the ECLAP community of experts that work on the working groups and meet each other at ECLAP workshops and conferences, such as ECLAP 2012 in Florence, Italy [Nesi and Snatucci, 2012], ECLAP 2013 [Nesi and Santucci, 2013] in Porto, at Europeana meetings, and in other conferences of the sector: ECLAP events see <http://www.eclap.eu/drupal/?q=node/3757>. For facilitating the networking and discussions, ECLAP is also a repository of technical documents, demonstrators, best practices and standards that can be used to better understand the sector problems and find corresponding guidelines, state of the art solutions as well as future activities and project proposals.

The ECLAP Content and User Service exploit the use of advanced social media and semantic computing technologies and solutions for the content enrichment, aggregation and distribution of rich multilingual performing art content towards multichannel: PC and mobiles. Presently, ECLAP distributes more than 120000 distinct objects, up to 13 major metadata languages, towards a community of about 2200 registered users, world-wide distributed, while the largest communities of users and connections come from Italy, UK, USA, France, The Netherlands, Portugal and Slovenia.

This means that ECLAP users can search from a unique service both technical documents and performing arts content. This approach may be an advantage since in many cases the distinction from technical documents and performing arts content is not strict. For example, these aspects are mixed and blurred in backstage technical documents, interviews, educational content, comments, and web pages. This also means that, for this purpose, the indexed content on ECLAP is heterogeneous and cross media, ranging from video, audio, documents, images, to blogs, web pages, collections, play lists, annotations and tools [Bellini, Cenni, Nesi, 2012, KDIR]. In fact, at each query the ECLAP query service provides an answer in terms of faceted results including different content types and formats. The indexing and search facilities of ECLAP provide support for fuzzy correction

The screenshot displays the ECLAP website interface. At the top, there is a search bar with the query 'you PARA | DISO' and a 'deep search' button. Below the search bar, a video player shows a woman in a white dress on a stage. To the right of the video, there is a 'METADATA' section with fields for Title, Subject, Description, and Technical details. Below the video, a 'SOCIAL GRAPH' section shows a network of users and their interactions. Further down, there is a 'RELATED OBJECTS BY TEXT' section with a list of search results, each with a thumbnail, title, and relevance score. On the right side, there is a 'SEARCH FILTER' section with various facets like 'Resource category', 'Type', 'Group', and 'Classification - Genre'. At the bottom, there is a 'CONNECTION REQUESTS' and 'CONTENT' section.

of typos and for advanced queries, with and/or operators, substrings, perfect matching, etc. [Bellini, Cenni, Nesi, 2012, KDIR], [Bellini, Cenni, Nesi, 2012, ECLAP]. ECLAP offers a wide range of innovative solutions and tools to support cultural institutions in managing, providing access to and disseminating their online digital content collections to users in 21 languages. The ECLAP major content services are reviewed in the following.

3.1 Managing content.

ECLAP provides services and tools for automated content ingestion, adaptation, metadata ingestion and editing, semantic information extraction, indexing and distribution by exploiting the most innovative and consolidated technologies [Bellini et al., 2012, IEEE Multimedia]. The content ingestion may start taking metadata and content files from any kind of archive and/or database or by providing them via FTP and/or web based utilities. Once the metadata area ingested, an intelligent content processing back office is capable of collecting and automatically repurposing content for distribution via pc and mobiles, coping with more than 500 digital file formats.

ECLAP supports the institutions in all their activities: metadata selection and mapping, content ingestion, to the definition and management of permissions and licenses on contents, and finally managing their users on ECLAP services. For details about the ECLAP ingestion process and facilities see: <http://www.eclap.eu/drupal/?q=node/3739>.

According to ECLAP workflow, the obtained metadata are sent to Europeana only after that the metadata have been enriched and linked to a reachable digital resource and when the IPR details have been finalized, with needed quality level. The IPR management and the assignment of access restrictions is a way to enable the increment of possible available content on the internet. Permissions as IPR models can be enforced on content by each ECLAP institution (content owner), by using the IPR Wizard tool [Bellini, Nesi, Paolucci, 2013, IEEE ICC]. An ECLAP IPR Model can be associated with each single content or collection. The IPR model has been derived from the work performed on MPEG-21 [MPEG-21]. This means that access rules are imposed to restrict and regulate the content access taking into account: content format (video, audio, document, etc.), actions/rights (play, download, stream, embed, etc.), device (PC, mobile, mobile application), users' type (private, public, educational, etc.), location (nationality, university, ..), resolution (HD, high quality, medium, low, etc.) [Bellini, Bruno, Nesi, 2013]. This model for content distribution with IPR management, is associated with a strong legal model as Terms of Use and privacy policy (see them on the portal). This allowed ECLAP to have in two years of content ingestion and distribution only one IPR resolution to be managed, that have been solved in a couple of emails, despite to the high number of newly published and accessed content items, and content providers involved, coming from different nationalities. For details about the IPR model and tools see: <http://www.eclap.eu/drupal/?q=node/4021>

IPR information				
Rights				
Ferruccio Marotti, Centro Teatro Ateneo – "Sapienza" Università di Roma, Eredi Gassman				
IPR owner page link to page				
Europeana rights Europeana: Unknown copyright status				
Public No				
PC permission				
	Public	Group	Educ.	Trusted
Download HD PC	No	No	No	Yes
Play HD PC	Yes	Yes	Yes	Yes
Download LD/MD PC	No	No	No	Yes
Embed	No	No	No	Yes
Play LD/MD PC	Yes	Yes	Yes	Yes
Mobile permission				
	Public	Group	Educ.	Trusted
Download mobile browser	No	No	No	Yes
Play mobile browser	Yes	Yes	Yes	Yes
Download mobile app	No	No	No	Yes
Play mobile app	Yes	Yes	Yes	Yes

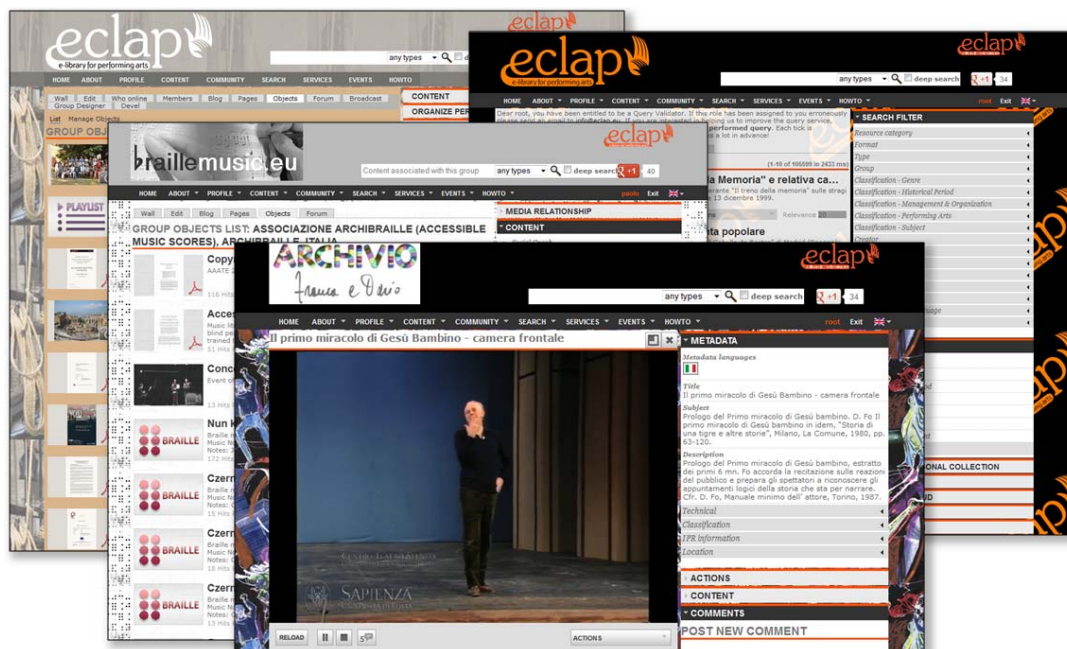
The ECLAP content management performs a wide range of metadata enrichment activities (based on AXCP media grid [Bellini et al., 2012, IEEE Multimedia]). The typical **metadata enrichments** performed by ECLAP can be the addition of technical descriptors of source files, the addition of more languages, the geo localization passing from location named into metadata and descriptors to formal GPS position, the production of QR codes for museum inspection and linkage (see it as augmented reality first step), the content aggregation, the addition of comments and tags, the association of taxonomical classification, the

establishing of connections with dbPedia open data, the addition of a formal IPR license descriptor, the association of univocal date and time, the association of an UUID (permitting the management of any kind of identifiers that may be available for the single content element such as: ISBN, ISAN, ISMN, private coding IDs, etc.), the production of LOD model, the content aggregations, etc. [Bellini and Nesi, ECLAP 2013]. As a result, the content is described in terms of metadata based on the so called ECLAP semantic model which is much richer than the ECLAP ingestion model [Bruno, Paolucci, Bellini, Mitolo, DE3.3.2, 2012]. For the ECLAP metadata ingestion model: <http://www.eclap.eu/drupal/?q=node/40876>.

Therefore, the activity of **content publishing to Europeana** and as **Open Data** is very simple for the institutions since the content can be automatically ingested in several different manners, processed and automatically adapted for format, metadata and IPR, to arrive to be published as full content information on ECLAP service portal, while a subset of the metadata are provided to Europeana according to the EDM, Europeana Data Model [Europeana EDM]. The enriched metadata are also made available in different formats (as LOD, OAI-PMH, DC, etc.) for the former institutions (content providers) and for massive diffusion and promotion. Thus, the content published on ECLAP is widely indexed on all major engines and can be accessed from any kind of device, from PC, TV and mobiles. The ECLAP service also allows to update and review the extended metadata, for example to make corrections, add more details and/or additional languages, create links with other sources, etc., and automatically provides the updates towards Europeana, LOD, ECLAP, mobile, etc. For more details about the ECLAP semantic model see ECLAP deliverable on page support: <http://www.eclap.eu/drupal/?q=node/3609>

The ECLAP content model on WEB also allows the embedding (Copy HTML) of ECLAP content in third parties portals. The institutions may exploit ECLAP as streaming service for the audio-visual content by integrating in their lighter servers the provided HTML code of the ECLAP players. For details about citation and embedding: <http://www.eclap.eu/drupal/?q=node/40876>

Moreover, ECLAP also provides infrastructural connection for direct promotion of content towards a large number of social networks, including: Facebook, LinkedIn, Diggs, Twitter, etc. The above described mechanisms can be exploited for promoting content on Internet and among other institutions.



ECLAP: institutions' groups and channels,
e.g., BrailleMusic and CTRF of Franca and Dario Fo.

On ECLAP, each content provider may have its own distribution channel/group (including a forum and a blog in addition to the space for their content collections, and the groups can be open, moderated or private) with the possibility of customizing the group user interface according to their logo and colours. This **multitenant modality** permits at the institutions to see ECLAP as a non-intrusive service, to reinforce their brand and at the same time to exploit and experiment a number of innovative ECLAP tools, to accelerate the promotion exploiting ECLAP social media, LOD and Europeana channels, and ready to access new users for their content. Moreover, the ECLAP solutions is also very interesting for their users, that may get in contact with other colleagues, and may get a wider set of content in response to their search and queries, and may establish connections among different content belonging to different collections and to Europeana.

4 ECLAP Content Overview

ECLAP enriches Europeana through a variety of performing-arts resources of relevant cultural value. Users can access records pertaining to classes, rehearsals and performances of the great masters of theatre, dance and music of the 20th century, but also to the great masterpieces of oral tradition. Most of the 120 thousands items provided were not previously accessible through Internet, resources include video and audio recordings, texts, images, animations, playlists, collections, annotations, 3D objects, Braille scores, e-books, cross media interactive content and serious games [Bellini, Cenni, Nesi, KDIR 2012]. In particular, ECLAP provides the unique videos, images and texts related to more than 50 years of activity of the Dario Fo and Franca Rame theatre company, featuring [videos](#), [photos](#), [texts](#), [drawings](#), paintings, [sketches](#), [posters](#), copies of contracts and of invoices, [notes](#), books, [articles](#). Other unique, irreplaceable material includes video, audio recordings and photos of performances, workshops, seminars, rehearsals of [Jerzy Grotowski](#), [Peter Brook](#), [Gennadi Bogdanov](#), [Anatolij Vasil'ev](#), [Alberto Sordi](#), [Carmelo Bene](#), [Giorgio Strehler](#), [Mimmo Cuticchio](#), [Gian Maria Volonté](#), [Judith Malina](#).

Theatre heritage, performers and groups of individual nations are also well-represented for each of the national partners of ECLAP. These include:

- the extensive audiovisual records pertaining to Fo's “[Hellekin, Harlequin, Arlecchino](#)”, taken with three broadcast cameras including all the rehearsals as well as the actual performance;
- the digitally-restored film version of [The Constant Prince](#), directed by [Jerzy Grotowski](#), one of the 20th century's most important theatre events, widely recognised for the eponymous role played by Ryszard Cieslak;
- videos about performers from [Dutch newsreels](#) collections from the 1920s to the 1960s and [photos](#) from a wide variety of Dutch television programmes and showcase performers, puppet shows, dance programmes, television decors and music shows, as well as several video recordings of performances of contemporary Dutch directors, choreographers and companies;
- [puppets photos](#), paper backdrops, theatrical posters, performances photos, [costume sketches](#) pertaining to the Catalan theatre and ranging from the 19th century to the present days;
- videos related to music, [dance](#) and performing arts in Spain;
- [audio recordings](#) and videos related to Portuguese chamber music festival, as well as [concert programs](#) from Porto mid 20th century performances;
- thousands of photos from the “[Designing Shakespeare](#)” collection;
- video interviews with directors from French Festivals;
- videos, photos and texts pertaining to Slovenian [theatre](#) and dance productions;
- video recordings of Hungarian [performances](#), documentaries and interviews regarding theatre, dance and puppet theatre;
- [videos](#), audio recordings, [photos](#), drawings, papers, 3D models related to the work of the major Polish directors and set designers.

In addition to this European performing arts heritage, ECLAP offers a great variety of documents pertaining to other countries. For example, a consistent part of the audiovisual collections offered by Centro Teatro Ateneo of Roma is dedicated to the Eastern relationship between rite and theatre, that influenced the formation of European culture. This aspect is explored through documentaries which subjects ranges from the Dionysiac possession rituals from Tracia – the “Anastenarides” – to the possession rituals from Eastern

African areas (“Lumbi”) and Indonesia (“[Kris dance](#)”). The University of Castilla-La Mancha offers several photos and videos showing different works by Latin American choreographers and provides texts written or edited in South America, such as “[Desviaciones](#)”, and [Siempre la danza](#) (2010) [Teatralización del Folklore y otros ensayos](#) (1989) by the Cuban Dance specialist Ramiro Guerra. The Museum of Archaeology and Anthropology of the University of Cambridge provides photographs of dances, dramas, masquerades, story telling, religious and musical performances, and rites of magic originate from all over the world, and dated between the 1880s and the 1930s. Collections include content from [Asia](#), [Africa](#), [North America](#), the [Pacific area](#).

Moreover, the majority of the videos provided by Centro Teatro Ateneo were shot with at least two broadcast cameras to document the events from different angles. ECLAP users can access both the editing of the different angles and the entire shootings of each camera. The recordings of the two cameras are synchronized, thus allowing users to deeply analyze the event through My Story Player. The possibility of viewing the same moment from different perspectives is particularly useful in an educational and academic context: it might be used, for example, to study a performer’s technique, as clearly shown by the Dario Fo’s videos, where we can notice the different expressivity of the actor’s profiles simultaneously caught by the left and right cameras.

5 Content Aggregation Tools

Once of the most interesting features of ECLAP consists in the possibility of creating content aggregations. Content aggregations can be: playlists, collections, e-learning courses, annotations, and audiovisual synchronizations [Bellini, Nesi, Paolucci, Serena, IEEE ISM 2011], [Bellini, Nesi, Serena, DMS 2011]. The ECLAP service allows the users to directly create their own content aggregations and share them with other users. On the other hand, the automated production of content aggregations is possible, for example by providing content that reach the ECLAP ingestion service suitably tagged as belonging to the same collection, e.g., using a collection ID. For more details about content aggregation see: <http://www.eclap.eu/drupal/?q=node/3738>

In ECLAP, the **Collections** are simple aggregations of ECLAP content that may be personally defined for private use by each user and may be published and shared to the others. During the collection publishing, the user has to assign classification and identification metadata. This allows to consider Collection as regular content and to export them as linked open data, as well as to provide them as aggregated content towards Europeana EDM, and thus are part of the ECLAP semantic model.

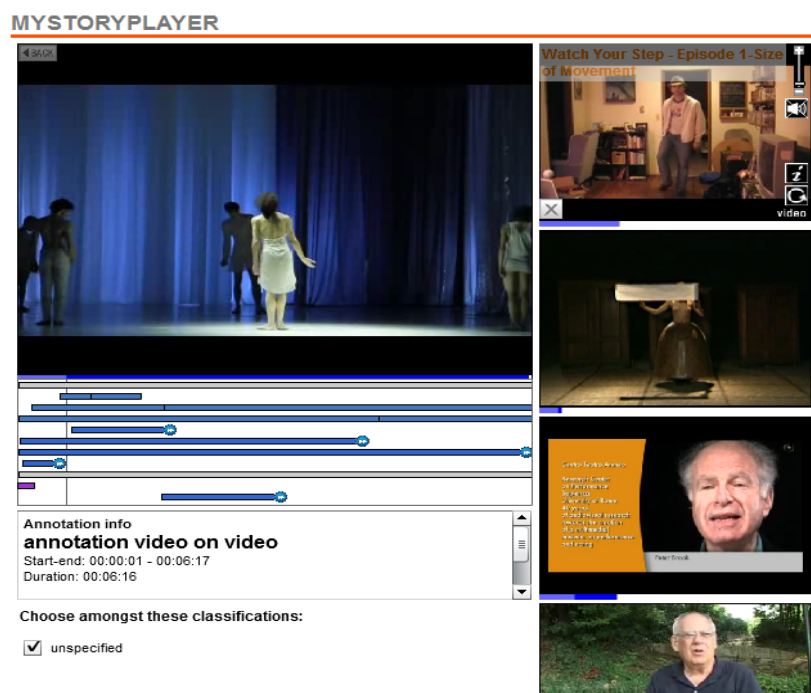
The ECLAP **Playlists** are used to create specific collections of audiovisual content, e.g., a set of audio tracks, videos and images, to be played in a given order. The playlist execution consists in the sequential play of the single content objects. In ECLAP, the playlist supports the inclusion of images and audiovisual segments of the media. The same media can be included in several playlists and/or any time segment can be used in any playlist. The execution time ordering for each playlist object is user

The screenshot displays the ECLAP user interface. At the top, a video player shows a man speaking, with the title "Il primo miracolo di Gesù Bambino - camera laterale sinistra". Below the video player is a "SOCIAL GRAPH" section showing a network of users and annotations. To the right, a "PLAYLIST'S PLAYBACK" sidebar is visible, containing a list of playlist items, "PLAYLIST METADATA" (including title, creator, and classification), and "PLAYLIST ACTIONS".

defined. In ECLAP, the user may put in the play list a small segment of video and audio, without the modification of their corresponding files. The access to the video segment is performed in real time by the video player as execution time only. This permits to create e-learning units without the need to slicing audiovisual. The semantic of ECLAP playlist allows to play the audiovisual content according to the identified sequence only once or in a continue loop, from last to the first forever. From the operative point of view, a user can take from the portal any audiovisual segment to compose its own playlist. The operation is performed on a specific audiovisual flash player in which one can select the start/end of the audiovisual segment. In the case of images, a duration time of their permanence on screen can be also set. Once a play list is complete, the user may decide to publish and share it on ECLAP. In this case, metadata and taxonomical information are requested. The published playlist can be aggregated in Collections and into Courses as basic elements. Please note that the association of metadata keeps unchanged the metadata associated with the objects composing the playlists.

On ECLAP, e-learning **Courses** are defined as a set of content objects (audio, video, collection, playlists, web pages, blog, events, etc.) organized in lesson units and glued by descriptive guiding text of the course. A lesson unit may include also links, external resources, questionnaires, sondages, etc. The courses have specific mechanisms to control their access from the students according to the e-learning/distance learning certifications models and legislations. These mechanisms allow controlling the effective access and fruition of the single lesson unit. To this end, a specific back office is provided (for teachers, students, coordinators, tutors, administrators, etc.) to manage the course subscription, monitoring student progresses, etc., as in regular learning management systems, LMS.

A more sophisticated aggregation tools has been derived from MyStoryPlayer tool [Bellini, Nesi, Serena, DMS 2011]. With MyStoryPlayer users may define **annotations and/or relationships** among audiovisual content segments (image, video, audio) (see Figure 4). For example, defining sequences of video, synchronized execution of video segments, annotation of an audiovisual segment by using another segment, etc. The associated comments and tags to the relationships can be used to search, filter and describe the annotations. This approach allows creating multiple media executions and comments that can be used for training and explaining didactical situations. By using the MyStoryPlayer, an ECLAP user can perform annotations on any audio,



MyStoryPlayer.

video or image located on the portal by using a simple on-line tool. Then the annotations performed may be played/executed by the MyStoryPlayer tool, where a full interactive player allows navigating on the several relationships established among the audiovisual content elements on ECLAP. The activity performed on the audiovisual executions, including the clicks and jumps from one video segment to another, etc., can be recorded as personal experiences (paths) and shared with the other users, for example for educational purposes. The semantic model in terms of RDF triples allows searching for annotations and it is sent to the MyStoryPlayer according to contextualized SPARQL queries [RDF]. The semantic relationships are also published in terms of LOD and on Europeana EDM, and thus are part of the ECLAP semantic model. As for the other features like play lists and collections, no alteration is performed on the original file, thus no

specific IPR authorization is needed to use them in MyStoryPlayer. For more details about MyStoryPlayer, tools for producing annotation and playing them see: <http://www.eclap.eu/drupal/?q=node/3748>

6 Mobile Content Organizer

The content access from mobile devices is presently a facility that is given for granted by many institutions. Most of the present smartphones and tablets are capable to access at complex web pages to play video and open large documents. On the other hand, in order to use these devices for educational and professional usages several other features have to be available. To this end, in ECLAP the Content Organizer mobile application has been developed. The Content Organizer allows at the final users to get access content



from multiple cultural heritage portals according to the IPR models, saving the registration and authentication credentials. It is available for iOS, Android and Windows Phone and it allows users to download and organize content in the mobile device. The content download may start from ECLAP portal as well as from QR code. Once the content is downloaded to the mobile, the user can manage on the mobile device, performing search, browse, tags, and get GPS and general information, etc. The Content Organizer may organize and play ePub formats, video, audio, cross media content, images, documents, pdf, collections, etc. The content can be browsed for groups, portals, taxonomy and personal tags. The latter are also used for creating a personal organization. The content is indexed and can be accessed via GPS locations, permit the upload of content from their mobile, etc.

For more details about the status on mobile devices see: <http://www.eclap.eu/drupal/?q=node/94220>

7 ECLAP added value collaborative and social tools

One of the challenges of ECLAP has been the setup of a service and environment in which professional activities would be facilitated by the mediation of computer supported collaborative tools. In fact, in most cases content aggregation portals are simple ingestion tools in which the metadata are ingested and then passed to Europeana. In the case of ECLAP, the best practice network and the service portal have the potentials to continue at providing the services for a longer time. In terms of services for the final users, ECLAP is providing a set of added value tools and services that motivate the institutions and final users to continue stay the usage of ECLAP.

Networking and connections with colleagues (<http://www.eclap.eu/drupal/?q=node/3502>). ECLAP service allows the user to get registered on groups and channels, on which blogs and discussion forums are available. Moreover, the comments and votes can be associated with each content and web page. This allows creating a collaborative environment in which different kinds of discussions may be hosted. These mechanisms are also supported by the possibility of importing contacts from social networks and by the possibility of sending direct recommendations and messages, and establishing stable connection with other colleagues.

User recommendations and suggestions. In different contexts, the ECLAP users receive suggestions about content and/or colleagues of their interest. This service is based on estimating similarity of those elements with their static and dynamic profile [Bellini, et al., HCIC 2013], thus contextualized suggestions on the basis of general interests and recent behaviour on ECLAP. This feature is strongly appreciated by ECLAP users, since the suggested contents are among the most frequently clicked. Suggestions are also provided by means of regular newsletters via mailing.

Content management, publication and promotion, publication and update on Europeana, publication of LOD, distribution towards mobiles, content and video streaming for third party portals via embedding, IPR management to control content access, multitenant solution for content provider branding of the group, connection with social networks for content promotion (contact importing, social icon and recommendation towards social networks such as: YouTube, Facebook, LinkedIn, Twitter), etc. The automated content ingestion and processing facilities based on AXCP belong to the content management [Bellini et al., IEEE Multimedia 2012]. They are provided for both massive professional and user generated content.

Content aggregation tools, (<http://www.eclap.eu/drupal/?q=node/3738>) which can be used for personal purpose and for educational access and content distribution, such as: playlist, collection, MyStoryPlayer, courses, Social Graph. This feature is associated with the several facilities for content enrichment (addition of semantic information, links, comments, annotations, contextualization, tags, votes and the addition of other languages for metadata).

Search facilities (<http://www.eclap.eu/drupal/?q=node/115358>) with its indexing, advanced features and faceted results on all the extended metadata (more than 500 metadata fields for each content) is a very interesting and requested feature [Bellini, Cenni, Nesi, KDIR 2012, ECLAP 2012]. Taking into account that ECLAP provides a much better search quality with respect to the similar services accessible for cultural heritage content provided by the former institutions. This is due to the fact that: most of them do not take into account full text multilingual and semantic search. Moreover, only a small part of the ECLAP semantic model metadata are accessible on Europeana.

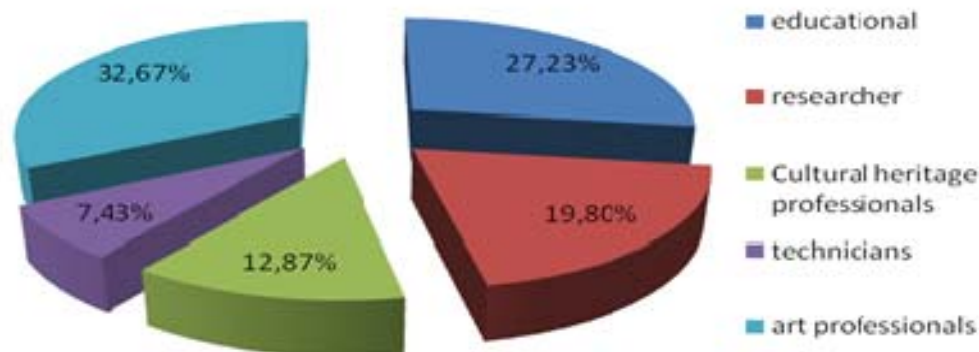
Social Graph tool (see <http://www.eclap.eu/drupal/?q=node/116088>) that allows seeing, explore, play and browse the relationships among users and content. The Social Graph is directly accessed from the home page of each registered user. The users have the possibility of learning more about the relationships established among content and those among users, thus stimulating them in creating more connections among content and users. A large number of new relationships are going to be added on this semantic tool.

8 Administration and Monitoring Tools

In ECLAP, a relevant effort has been dedicated to provide at the single institutions and group a set of tools for managing and monitoring the development of their content and activity for their groups/channel members, and social network analysis. The content management allows performing single and massive editing and changes on content associated with the group. For example, to change the taxonomical association to all content elements of a collection, the change of the IPR model for a large set of selected content, etc. Orchestrated workflow system and automated process management system based on Grid technology aid large scale multimedia services to manage huge amount of content and metadata and to increase the content quality and accessibility. A workflow model and architecture adopted by ECLAP network has been presented to show the integration between the ECLAP workflow and automated back-office based on Grid. The proposed solution allows users and automated workflow processes to interoperate securely and to increase the quality and accessibility of content and metadata. This service is currently in use by 31 institutions; it handled at current date 662,534 workflow transactions for 114,579 content items with an average of 5.8 transactions per content and a maximum of 85 transactions for one content. These transactions were performed in 653 days with an average of 1,014 transactions per day and a maximum of 13,162 transactions in one day. The transactions related with manual enrichment were 539 and with IPR setup were 981.

Regarding the group's users, each group manager can pose specific queries. For example, to understand which are the most active users, the most accessed content, the most active periods, the commonly accepted content types and topics, the most interested devices, the collective intelligence profile of the registered users, etc. In the pie chart, the distribution of the active 2200 ECLAP users is reported, where: educational are teachers and students; cultural heritage professionals are editors and archivists; and art professionals are performers, directors, composers, etc. The ECLAP users remain on the portal for about 5 minutes for each session, and during their permanence spend a large part of their time playing video, reading documents and

web pages, 6% of them perform queries, and recently the 10% of them navigate into the social graph. In terms of areas of work, they dedicate their time at the content workflow for the 55%, at content access 20%, networking the 11%, query and search 4%.



Distribution of ECLAP users profiles.

In terms of content, the ECLAP users present an equal interest on content and informative web pages. Among the content accessed and downloaded, the most requested are PDF documents with 60%, while online video streaming and documents view provoke similar interest of about 18%, images are seen in the 55% of the cases. These data have also to be weighted with respect of the offered population of the 112000 content elements that present: 65% images, 4.5% of audio video, 1% of web pages, 29% of documents. For more details about statistic and analysis capabilities see <http://www.eclap.eu/drupal/?q=node/3750>

9 Conclusions

The strong technological evolution in the field of digital media, digital library, social networking and cloud computing have determined a strong push in the renovation of cultural heritage solutions for archival institutions and museums. ECLAP is presently used by more than 35 institutions mainly from Europe. It may be regarded as a new generation of digital content service tools for cultural heritage institutions that allow them to exploit specific and advanced benefits from semantic and social media technologies: networking and social networking, automated user recommendations, automated content management, advanced and collaborative content aggregation tools, IPR management, advanced indexing and search facilities, social graph and LOD, and mobile applications. These advanced features are also supported by precise and massive administrative and monitoring tools, which include facilities for social network analysis, and statistical data analytics. ECLAP can be regarded as a vertical service for performing arts institutions, while it could be easily replicated for several other cultural heritage single institutions and/or aggregations of them. Moreover, some of the ECLAP tools (IPR Wizard, MyStoryPlayer, Social Graph, automated back office based on AXCP, MINT metadata mapper, etc.) can be also adopted in other services.

10 Bibliography

- E. Bellini, K. Maratea, "Best Practices on Performing Arts Digital Assets", ECLAP DE5.2.2 WGC, December 2012. [DE5.2.2 WGC remake: Best Practices on Performing Arts Digital Assets](http://www.eclap.eu/drupal/?q=home&axoid=urn:axmedis:00000:obj:2819933f-a79f-494d-bde9-ffd6e82a73a3§ion=supportpage)
<http://www.eclap.eu/drupal/?q=home&axoid=urn:axmedis:00000:obj:2819933f-a79f-494d-bde9-ffd6e82a73a3§ion=supportpage>
- Europeana EDM: http://version1.europeana.eu/c/document_library/get_file?uuid=4a73eb4d-1ff3-48bf-ba4f-ae634d122826&groupId=10602
- I. Bruno, M. Paolucci, P. Bellini, N. Mitolo, "DE3.3.2 infrastructure Content and Metadata Processing and Semantification"
<http://www.eclap.eu/urn:axmedis:00000:obj:a722b357-4644-4076-a259-0cbc6260ad74>
- MPEG-21, <http://mpeg.chiariglione.org/standards/mpeg-21/mpeg-21.htm>
- P. Bellini, D. Cenni, P. Nesi, "Indexing and Searching Cross Media Content in a Social Network", Proceeding of the ECLAP 2012 International Conference on Information Technologies for Performing Arts, Media Access and Entertainment", Florence University Press, May 2012, ISBN: 978-88-6655-125-6

DE7.5 – ECLAP Project Show Case Best Practice Network

- P. Bellini, D. Cenni, P. Nesi, "On the Effectiveness and Optimization of Information Retrieval for Cross Media Content", Proceeding of the KDIR 2012 is part of IC3K 2012, International Joint Conference on Knowledge Discovery, Knowledge Engineering and Knowledge Management, 4-7 October 2012, Barcelona, Spain.
- P. Bellini, I. Bruno, D. Cenni, P. Nesi, "Micro grids for scalable media computing and intelligence on distributed scenarios", IEEE Multimedia, in press, IEEE Computer Soc. 2012.
- P. Bellini, I. Bruno, P. Nesi, "A workflow model and architecture for content and metadata management based on grid computing", Proc. of the ECLAP 2013 conference, 2nd International Conference on Information Technologies for Performing Arts, Media Access and Entertainment, Springer Verlag LNCS, 2013. <http://www.eclap.eu/drupal/?q=it/node/119325>
- P. Bellini, I. Bruno, P. Nesi, M. Paolucci, "A Static and Dynamic Recommendations System for Best Practice Networks", Proc. of the Human-Computer Interaction Conference, 21-26- July 2013, Nevada, USA, Press by Springer Verlag LNCS.
- P. Bellini, P. Nesi, M. Paolucci, "IPR Management Models for Cultural Heritage on ECLAP Best Practice Network", Proc. of the IEEE International Conference on Communications, IEEE ICC 2013, Workshop "Beyond Social Networks: Collective Awareness", 9-13 June 2013, Budapest, Hungary, IEEE Press.
- P. Bellini, P. Nesi, M. Paolucci, M. Serena, "Models and tools for content aggregation and audiovisual cross annotation synchronization", Proceeding of ISM '11 Proceedings of the 2011 IEEE International Symposium on Multimedia, Pages 210-215, ISBN: 978-0-7695-4589-9
- P. Bellini, P. Nesi, M. Serena, "Mystoryplayer: Semantic Audio Visual Annotation And Navigation Tool", proc of the 17th international conference on Distributed Multimedia Systems, Convitto della Calza, Florence, Italy, 18-20 August 2011.
- P. Eversmann, E. Lint, J. Schuurman, "Best Practices on Performing Arts Education vs Digital Content", ECLAP DE5.2.2 WGA, December 2012 [DE5.2.2 WGA remake: Best-Practices-on-Performing-Arts-Education-vs-DigitalContent](#)
- P. Nesi, R. Santucci, "ECLAP 2013, Conference on Information Technologies for Performing Arts, Media Access and Entertainment", Springer, in press, June 2013. <http://www.eclap.eu/drupal/?q=node/119325>
- P. Nesi, R. Santucci, "ECLAP 2012 Conference on Information Technologies for Performing Arts, Media Access and Entertainment", Florence University Press, ISBN: 978-88-6655-125-6, 2012.
- Pierfrancesco Bellini, P. Nesi, "A Linked Open Data service for performing arts", Proc. of the ECLAP 2013 conference, 2nd International Conference on Information Technologies for Performing Arts, Media Access and Entertainment, Springer Verlag LNCS, 2013. <http://www.eclap.eu/drupal/?q=it/node/119325>
- RDF – Vocabulary Description Language 1.0: RDF Schema. [Online]. Available: <http://www.w3.org/TR/rdf-schema/>
- W. van den Heuvel, Lotte Belice Baltussen, "Best Practices on Performing Arts IPR Management and Business Models", ECLAP DE5.2.2 WGB, December 2012. [DE5.2.2 WGB remake: Best Practices on Performing Arts IPR Management and Business Models](#)

Other ECLAP deliverable references

- [DE3.1 Infrastructure: ingestion and processing content and metadata](#)
<http://www.eclap.eu/drupal/?q=home&axoid=urn:axmedis:00000:obj:a345a84f-6fdf-4f84-a412-88094ce363e2§ion=pagesupport>
- [DE3.2 Accessibility and Multilingual Support for ECLAP Solution](#)
<http://www.eclap.eu/drupal/?q=home&axoid=urn:axmedis:00000:obj:713ff609-aca8-48c0-a324-6c378e67f46d§ion=pagesupport>
- [DE3.3.1 Infrastructure: Content and Metadata processing and semantification](#)
<http://www.eclap.eu/drupal/?q=home&axoid=urn:axmedis:00000:obj:09064f55-dd3e-49b8-ba57-b8f9e21cdabd§ion=supportpage>
- [DE3.4.1 Infrastructure: Integration with Europeana and Multilingual Support](#)
<http://www.eclap.eu/drupal/?q=home&axoid=urn:axmedis:00000:obj:83bd03d6-5169-48d2-bb1f-0c52bc7b9f88§ion=supportpage>
- [DE4.3: Metadata/descriptors' interoperability](#)
<http://www.eclap.eu/drupal/?q=home&axoid=urn:axmedis:00000:obj:6d1e8e22-55d4-4082-9486-f37a3752704a§ion=supportpage>
- [DE4-3-1-Performing-Arts-Metadata-vs-Standardization](#)
<http://www.eclap.eu/drupal/?q=home&axoid=urn:axmedis:00000:obj:59e4963f-5e56-467c-8b89-1becca444eb2§ion=supportpage>
- [DE6.1.3: Validation and service optimisation](#),
<http://www.eclap.eu/drupal/?q=home&axoid=urn:axmedis:00000:obj:cf4e01b7-2778-4dab-9dfe-b5bf957a1a6a>